

LYNCHBURG, VIRGINIA

AL-499 (FAA)

23110

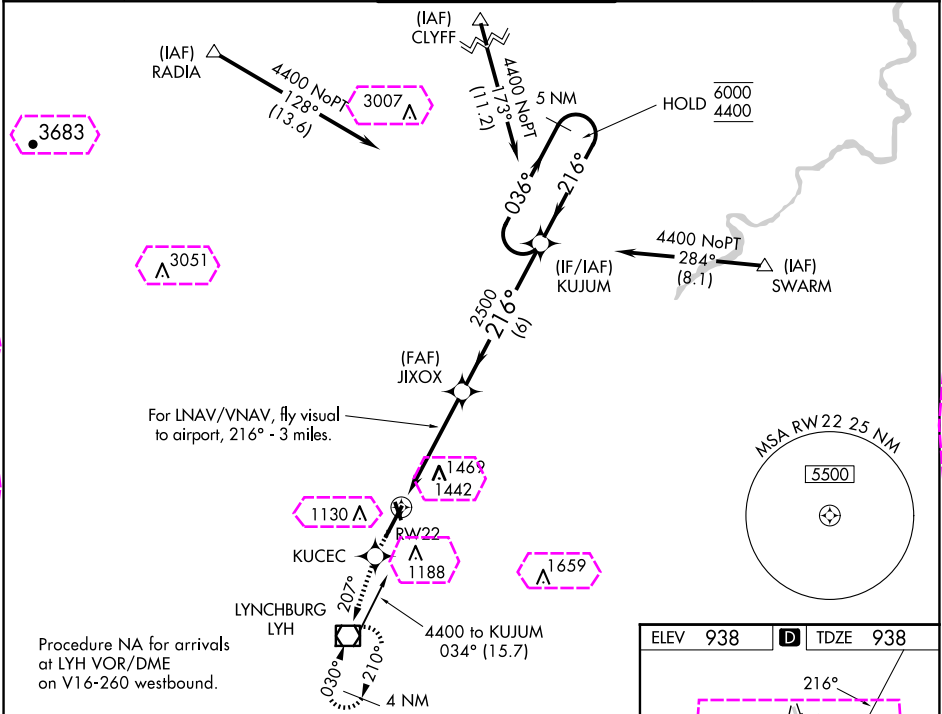
WAAS CH <b>97705</b> <b>W22A</b>	APP CRS <b>216°</b>	Rwy Idg <b>7100</b> TDZE <b>938</b> Apt Elev <b>938</b>
--	------------------------	---

# RNAV (GPS) RWY 22

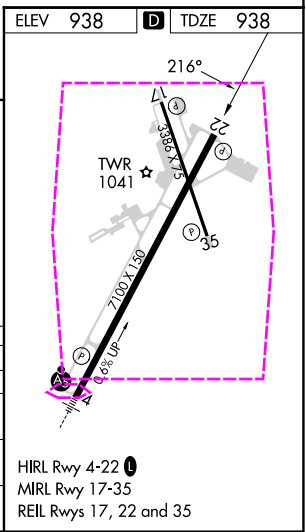
LYNCHBURG RGNL/PRESTON GLENN FLD (LYH)

RNP APCH. ▼ For uncompensated Baro-VNAV systems, LNAV/VNAV NA below -16°C or above 47°C. Rwy 22 helicopter visibility reduction below ¾ SM NA. Circling Rwy 17 NA at night. ▲	MISSED APPROACH: Climb to 3000 direct KUCEC and track 207° to LYH VOR/DME and hold, continue climb-in hold to 3000.
---	---

ATIS <b>119.8</b>	ROANOKE APP CON <b>135.0 254.325</b>	LYNCHBURG TOWER ★ <b>127.65 (CTAF) 0 257.8</b>	GND CON <b>121.9</b>	UNICOM <b>122.95</b>
----------------------	---	---	-------------------------	-------------------------



3000	KUCEC	tr 207°	LYH	VGSI and RNAV glidepath not coincident (VGSI Angle 3.00/TCH 45).	5 NM Holding Pattern
For LNAV/VNAV, fly visual to airport, 216° - 3 miles.					
<p>The diagram shows the holding pattern at KUJUM (5 NM) and the final approach segment. It includes the 216° and 036° turns, the 2500 altitude, and the 4.7 NM and 6 NM distances.</p>					
CATEGORY	A	B	C	D	
LPV DA	1250-1 312 (400-1)				
LNAV/VNAV DA	1939-2	1001 (1100-2)	1939-3	1001 (1100-3)	
LNAV MDA	1720-1 782 (800-1)	1720-1 ¼ 782 (800-1 ¼)	1720-2 ¼ 782 (800-2 ¼)	1720-2 ½ 782 (800-2 ½)	
CIRCLING	1720-1 782 (800-1)	1780-1 ¼ 842 (900-1 ¼)	1800-2 ½ 862 (900-2 ½)	1800-2 ¾ 862 (900-2 ¾)	



LYNCHBURG, VIRGINIA  
Orig-B 03JAN19

LYNCHBURG RGNL/PRESTON GLENN FLD (LYH)  
37°20'N-79°12'W  
**RNAV (GPS) RWY 22**

NE-3, 10 JUL 2025 to 07 AUG 2025

NE-3, 10 JUL 2025 to 07 AUG 2025

LYNCHBURG, VIRGINIA

AL-499 (FAA)

25219

WAAS CH <b>97705</b> <b>W22A</b>	APP CRS <b>216°</b>	Rwy Ldg TDZE <b>938</b> Apt Elev <b>938</b>	<b>7100</b>
--	------------------------	---	-------------

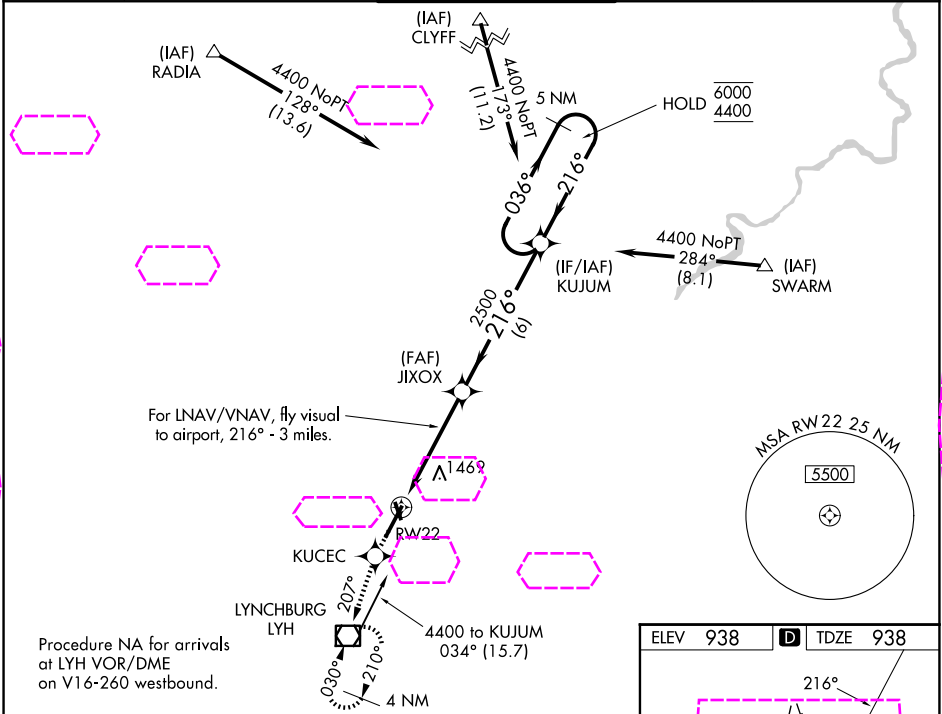
# RNAV (GPS) RWY 22

LYNCHBURG RGNL/PRESTON GLENN FLD (LYH)

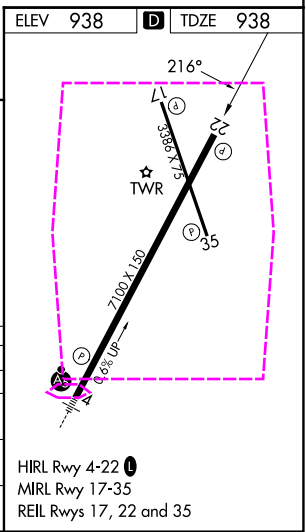
RNP APCH.  
▼ For uncompensated Baro-VNAV systems, LNAV/VNAV NA below -16°C or above 47°C. Rwy 22 helicopter visibility reduction below ¾ SM NA. Circling Rwy 17 NA at night.  
▲

MISSED APPROACH: Climb to 3000 direct KUCEC and track 207° to LYH VOR/DME and hold, continue climb-in hold to 3000.

ATIS <b>119.8</b>	ROANOKE APP CON <b>135.0 254.325</b>	LYNCHBURG TOWER ★ <b>127.65 (CTAF) 0 257.8</b>	GND CON <b>121.9</b>	UNICOM <b>122.95</b>
----------------------	---	---	-------------------------	-------------------------



3000	KUCEC	tr 207°	LYH	VGSI and RNAV glidepath not coincident (VGSI Angle 3.00/TCH 45).	5 NM Holding Pattern
For LNAV/VNAV, fly visual to airport, 216° - 3 miles.					
JIXOX					
RW22					
4.7 NM					
6 NM					
CATEGORY	A	B	C	D	
LPV DA	1250-1 312 (400-1)				
LNAV/VNAV DA	1939-2	1001 (1100-2)	1939-3	1001 (1100-3)	
LNAV MDA	1720-1 782 (800-1)	1720-1 ¼ 782 (800-1 ¼)	1720-2 ¼ 782 (800-2 ¼)	1720-2 ½ 782 (800-2 ½)	
CIRCLING	1720-1 782 (800-1)	1780-1 ¼ 842 (900-1 ¼)	1800-2 ½ 862 (900-2 ½)	1800-2 ¾ 862 (900-2 ¾)	



LYNCHBURG, VIRGINIA  
Orig-B 03JAN19

LYNCHBURG RGNL/PRESTON GLENN FLD (LYH)  
37°20'N-79°12'W  
**RNAV (GPS) RWY 22**

NE-3, 07 AUG 2025 to 04 SEP 2025

NE-3, 07 AUG 2025 to 04 SEP 2025