

LYNCHBURG, VIRGINIA

AL-499 (FAA)

23110

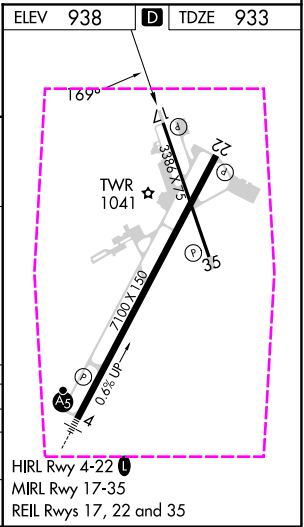
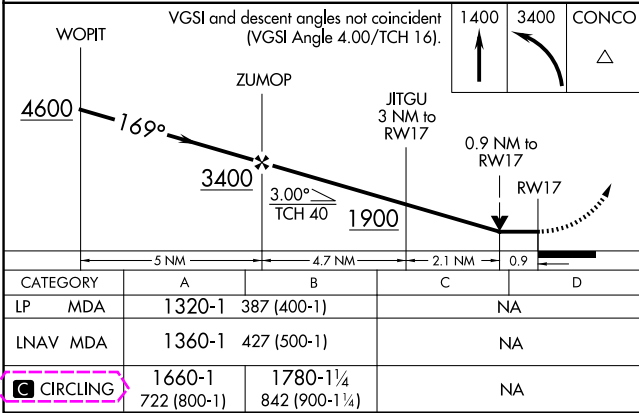
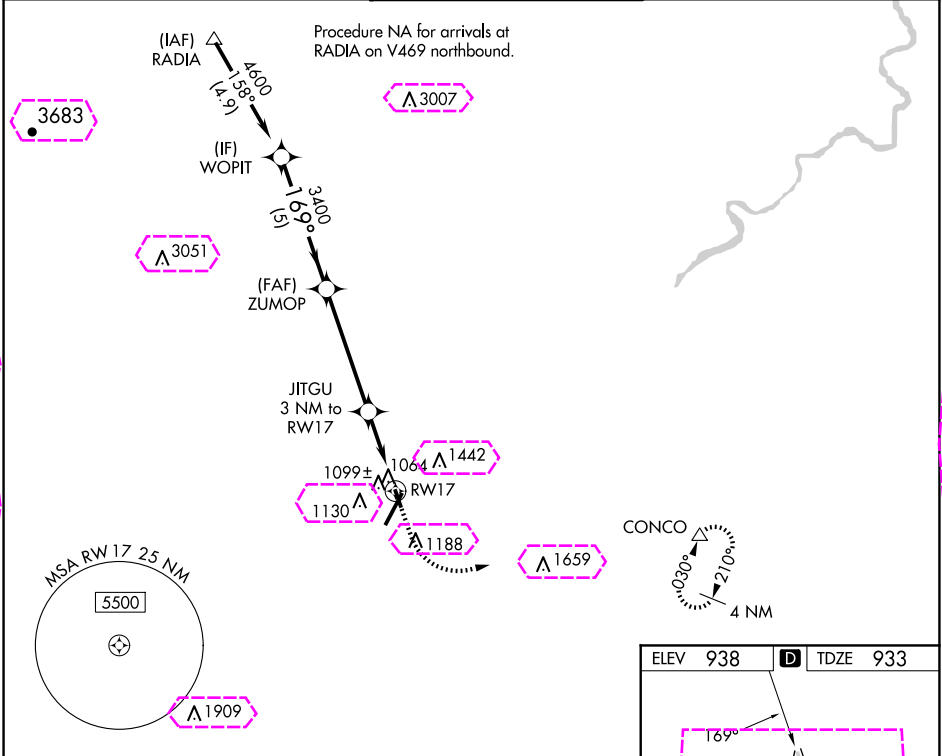
WAAS CH 48934 W17A	APP CRS 169°	Rwy Idg TDZE 933 Apt Elev 938	3386
----------------------------------------	------------------------	---------------------------------------------------	-------------

RNAV (GPS) RWY 17

LYNCHBURG RGNL/PRESTON GLENN FLD (LYH)

RNP APCH.	MISSED APPROACH: Climb to 1400 then climbing left turn to 3400 direct CONCO and hold.
▼ Procedure NA at night. ▲ Rwy 17 helicopter visibility reduction below 1 SM NA.	

ATIS 119.8	ROANOKE APP CON 135.0 254.325	LYNCHBURG TOWER ★ 127.65 (CTAF) 0 257.8	GND CON 121.9	UNICOM 122.95
----------------------	-----------------------------------------	---------------------------------------------------	-------------------------	-------------------------



LYNCHBURG, VIRGINIA
Orig-B 06DEC18

LYNCHBURG RGNL/PRESTON GLENN FLD (LYH)
37°20'N-79°12'W
RNAV (GPS) RWY 17

NE-3, 10 JUL 2025 to 07 AUG 2025

NE-3, 10 JUL 2025 to 07 AUG 2025

WAAS CH 48934 W17A	APP CRS 169°	Rwy Ldg 3386 TDZE 933 Apt Elev 938
----------------------------------------	------------------------	---------------------------------------------------------------

RNAV (GPS) RWY 17

LYNCHBURG RGNL/PRESTON GLENN FLD (LYH)

RNP APCH.

T	Procedure NA at night.
A	Rwy 17 helicopter visibility reduction below 1 SM NA.

MISSED APPROACH: Climb to 1400 then climbing left turn to 3400 direct CONCO and hold.

ATIS 119.8	ROANOKE APP CON 135.0 254.325	LYNCHBURG TOWER ★ 127.65 (CTAF) 0 257.8	GND CON 121.9	UNICOM 122.95
---------------	----------------------------------	--------------------------------------------	------------------	------------------

