

TUSCALOOSA, ALABAMA

AL-487 (FAA)

24137

TACAN LDK Chan 125 (117.8)	APP CRS 241°	Rwy Idg TDZE 164 Apt Elev 170
---	------------------------	---

TACAN RWY 22

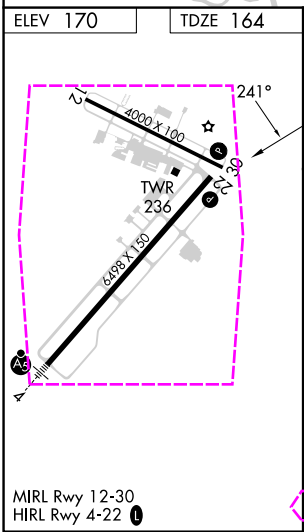
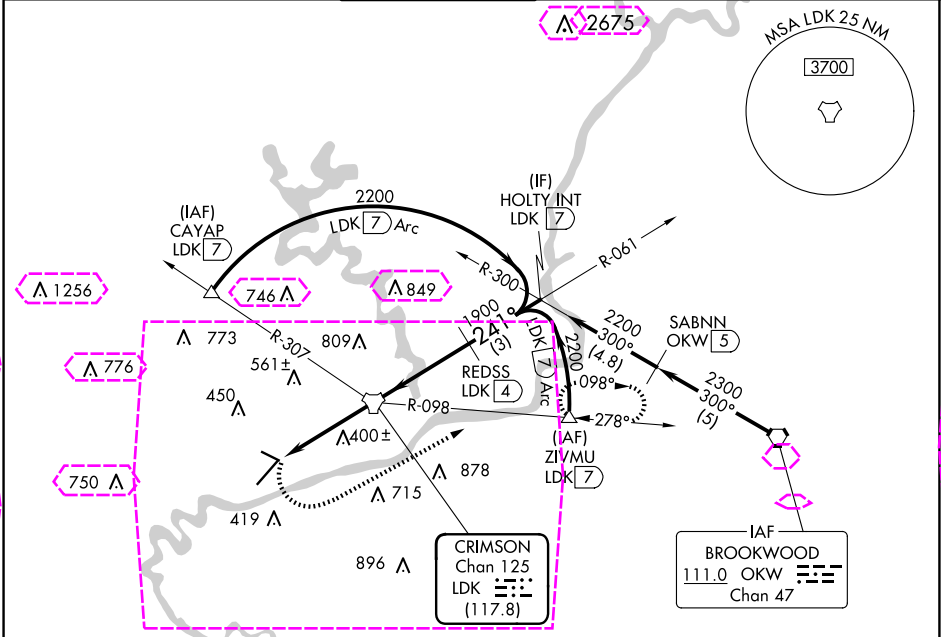
TUSCALOOSA NTL (TCL)

▼ Circling Rwy 12, 30 NA at night.

▲ Rwy 22 helicopter visibility reduction below $\frac{3}{4}$ SM NA.

MISSED APPROACH: Climbing left turn to 2300 on heading 060° and LDK TACAN R-098 to ZIVMU/LDK 7 DME and hold.

ASOS 132.825	BIRMINGHAM APP CON 120.15 269.25	TUSCALOOSA TOWER ★ 126.3 (CTAF) 0 256.7	GND CON 121.8 257.95	CLNC DEL 120.775	UNICOM 122.95
------------------------	--	--	--------------------------------	----------------------------	-------------------------



2300 hdg 060°	LDK R-098	ZIVMU △	LDK TACAN	REDSS LDK 4	HOLTY INT LDK 7	2200
			LDK 2.2 3.00° TCH 50			1900
			1.8 NM	2.2 NM	4 NM	3 NM
CATEGORY	A	B	C	D		
S-22	800-1	636 (700-1)	800-1 $\frac{3}{4}$	636 (700-1 $\frac{3}{4}$)		
CIRCLING	800-1	630 (700-1)	960-2 $\frac{1}{4}$ 790 (800-2 $\frac{1}{4}$)	960-2 $\frac{1}{2}$ 790 (800-2 $\frac{1}{2}$)		

TUSCALOOSA, ALABAMA
Orig-A 03NOV22

33° 13'N-87° 37'W

TUSCALOOSA NTL (TCL)
TACAN RWY 22

SE-4, 10 JUL 2025 to 07 AUG 2025

SE-4, 10 JUL 2025 to 07 AUG 2025

TUSCALOOSA NTL (TCL)
TACAN RWY 22