

TUSCALOOSA, ALABAMA

AL-487 (FAA)

24137

APP CRS	Rwy Idg	4000
297°	TDZE	170
	Apt Elev	170

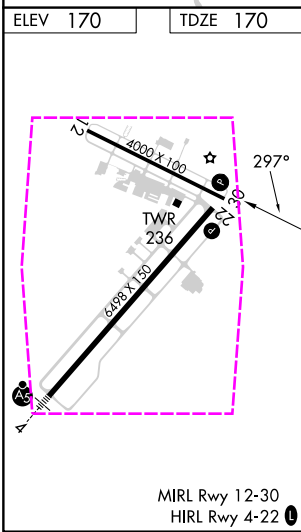
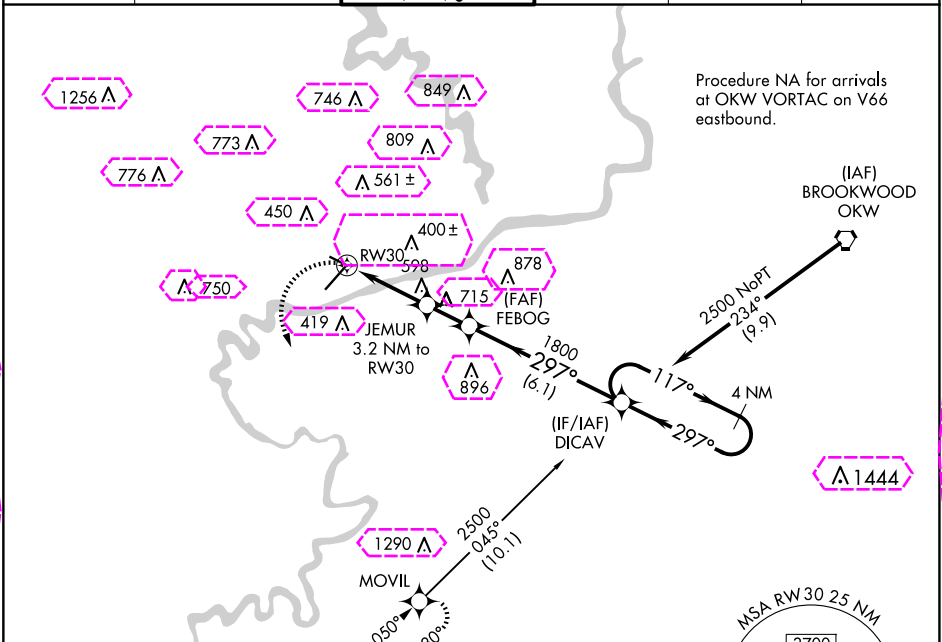
# RNAV (GPS) RWY 30

TUSCALOOSA NTL (TCL)

**⚠** DME/DME RNP-0.3 NA. Helicopter visibility reduction below 1 SM NA. When local altimeter setting not received, use Birmingham altimeter setting: increase all MDAs 180 feet and visibility LNAV Cats A and B ¼ SM, Cat C and D ½ SM, and Circling Cat C ¾ SM, Cat D ½ SM. Circling Rwy 12, 30 NA at night.

**MISSSED APPROACH:** Climbing left turn to 3000 direct MOVIL and hold.

ASOS 132.825	BIRMINGHAM APP CON 120.15 269.25	TUSCALOOSA TOWER ★ 126.3 (CTAF) 0 256.7	GND CON 121.8 257.95	CLNC DEL 120.775	UNICOM 122.95
-----------------	-------------------------------------	--	-------------------------	---------------------	------------------



3000	MOVIL	Visual Segment - Obstacles.	DICA V	4 NM Holding Pattern
		JEMUR 3.2 NM to RW30		
		FEBOG		
		1240		
		1800		
		3.2 NM	1.7 NM	6.1 NM
CATEGORY	A	B	C	D
LNAV MDA	900-1	730 (800-1)	900-2	730 (800-2)
CIRCLING	900-1	730 (800-1)	960-2¼ 790 (800-2¼)	960-2½ 790 (800-2½)

TUSCALOOSA, ALABAMA  
Orig-D 14JUL22

33°13'N-87°37'W

# TUSCALOOSA NTL (TCL) RNAV (GPS) RWY 30

SE-4, 10 JUL 2025 to 07 AUG 2025

SE-4, 10 JUL 2025 to 07 AUG 2025

TUSCALOOSA, ALABAMA

AL-487 (FAA)

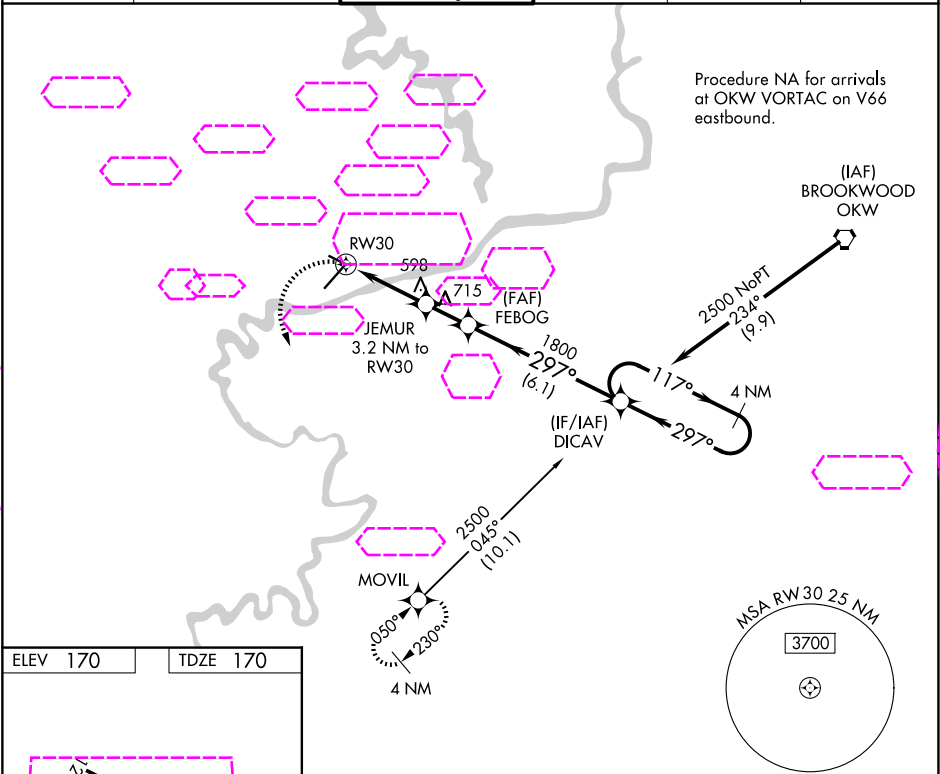
25219

APP CRS	Rwy Ldg	4000
297°	TDZE	170
	Apt Elev	170

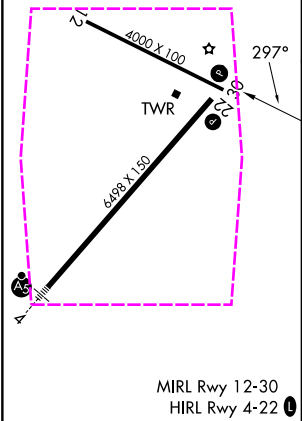
RNAV (GPS) RWY 30  
TUSCALOOSA NTL (TCL)

<p>⚠ DME/DME RNP-0.3 NA. Helicopter visibility reduction below 1 SM NA. When local altimeter setting not received, use Birmingham altimeter setting: increase all MDAs 180 feet and visibility LNAV Cats A and B ¼ SM, Cat C and D ½ SM, and Circling Cat C ¾ SM, Cat D ½ SM. Circling Rwy 12, 30 NA at night.</p>	<p>MISSED APPROACH: Climbing left turn to 3000 direct MOVIL and hold.</p>
--	---

ASOS 132.825	BIRMINGHAM APP CON 120.15 269.25	TUSCALOOSA TOWER ★ 126.3 (CTAF) 0 256.7	GND CON 121.8 257.95	CLNC DEL 120.775	UNICOM 122.95
-----------------	-------------------------------------	--	-------------------------	---------------------	------------------



ELEV 170	TDZE 170
----------	----------



3000	MOVIL	Visual Segment - Obstacles.		DICAV	4 NM Holding Pattern
		JEMUR 3.2 NM to RW30	FEBOG		
		1240	1800		
		3.2 NM	1.7 NM	6.1 NM	
CATEGORY	A	B	C	D	
LNAV MDA	900-1	730 (800-1)	900-2	730 (800-2)	
CIRCLING	900-1	730 (800-1)	960-2¼ 790 (800-2¼)	960-2½ 790 (800-2½)	

TUSCALOOSA, ALABAMA  
Orig-D 14JUL22

33°13'N-87°37'W

TUSCALOOSA NTL (TCL)  
RNAV (GPS) RWY 30

SE-4, 07 AUG 2025 to 04 SEP 2025

SE-4, 07 AUG 2025 to 04 SEP 2025