

24137

WAAS CH 81918 W22A	APP CRS 221°	Rwy Idg 6498 TDZE 164 Apt Elev 170
--	------------------------	---

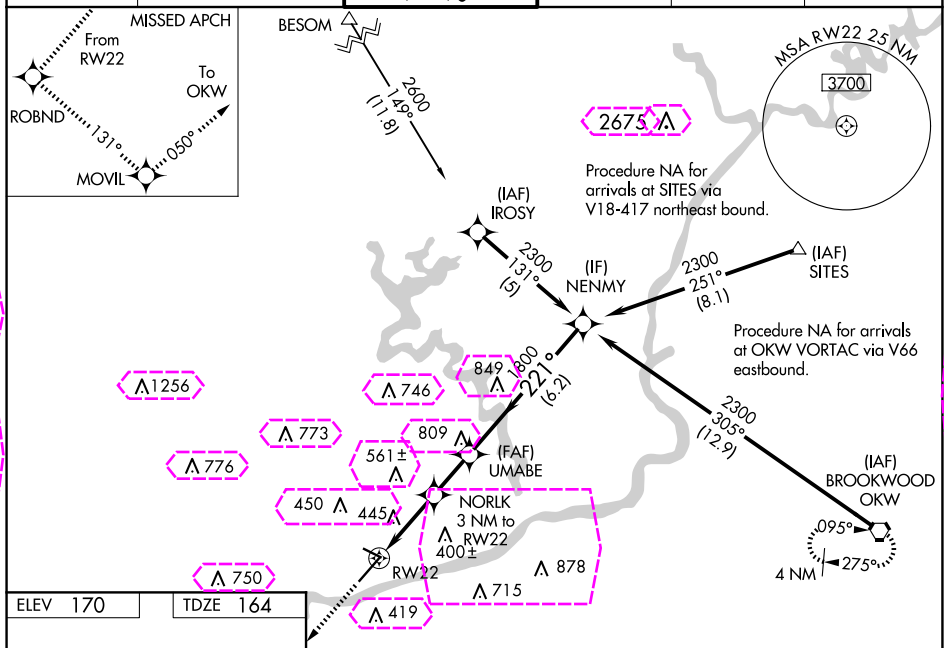
RNAV (GPS) RWY 22
TUSCALOOSA NTL (TCL)

TUSCALOOSA NTL (TCL)

▼ For uncompensated Baro-VNAV systems, LNAV/VNAV NA below -15°C (5°F) or above 48°C (118°F). DME/DME RNP-0.3 NA. Helicopter visibility reduction below ¾ SM NA. When local altimeter setting not received, use Birmingham altimeter setting: increase LPV DA to 760 feet and all visibilities ½ SM; increase LNAV/VNAV DA to 937 feet and all visibilities ¾ SM; increase all MDAs 180 feet and visibility LNAV Cats C and D ½ SM and Circling Cat C ¾ SM and Cat D ½ SM. Baro-VNAV and VDP NA when using Birmingham altimeter setting. Circling Rwy 12, 30 NA at night.

MISSED APPROACH: Climb to 2500 direct ROBND and left turn on track 131° to MOVIL and on 050° track to OKW VORTAC and hold.

ASOS 132.825	BIRMINGHAM APP CON 120.15 269.25	TUSCALOOSA TOWER * 126.3(CTAF) 0 256.7	GND CON 121.8 257.95	CLNC DEL 120.775	UNICOM 122.95
-----------------	-------------------------------------	---	-------------------------	---------------------	------------------



The diagram illustrates a VOR/DME station (2500) and a VOR station (2300) with various navigation aids and distances. The VOR/DME station (2500) is located at the top left, with a heading of 131° and a distance of 1.5 NM to the VOR station (2300). The VOR station (2300) is located at the top right, with a heading of 221° and a distance of 1.5 NM to the VOR/DME station. The VOR/DME station (2500) also has a heading of 050° and a distance of 1.9 NM to the VOR station (2300). The VOR station (2300) has a heading of 221° and a distance of 6.2 NM to the VOR/DME station. The VOR/DME station (2500) also has a heading of 131° and a distance of 1.5 NM to the VOR station (2300). The VOR station (2300) has a heading of 221° and a distance of 1.5 NM to the VOR/DME station. The VOR/DME station (2500) also has a heading of 050° and a distance of 1.9 NM to the VOR station (2300). The VOR station (2300) has a heading of 221° and a distance of 6.2 NM to the VOR/DME station.

CATEGORY	A	B	C	D
LPV DA	582-1½		418 (500-1½)	
LNAV/VNAV DA	759-2		595 (600-2)	
LNAV MDA	700-1 536 (600-1)		700-1½ 536 (600-1½)	700-1¾ 536 (600-1¾)
CIRCLING	720-1 550 (600-1)	800-1 630 (700-1)	960-2¼ 790 (800-2¼)	960-2½ 790 (800-2½)

Amdt 1B 14JUL22

33°13'N-87°37'W

TUSCALOOSA NTL (TCL)

RNAV (GPS) RWY 22

TUSCALOOSA, ALABAMA

AL-487 (FAA)

25219

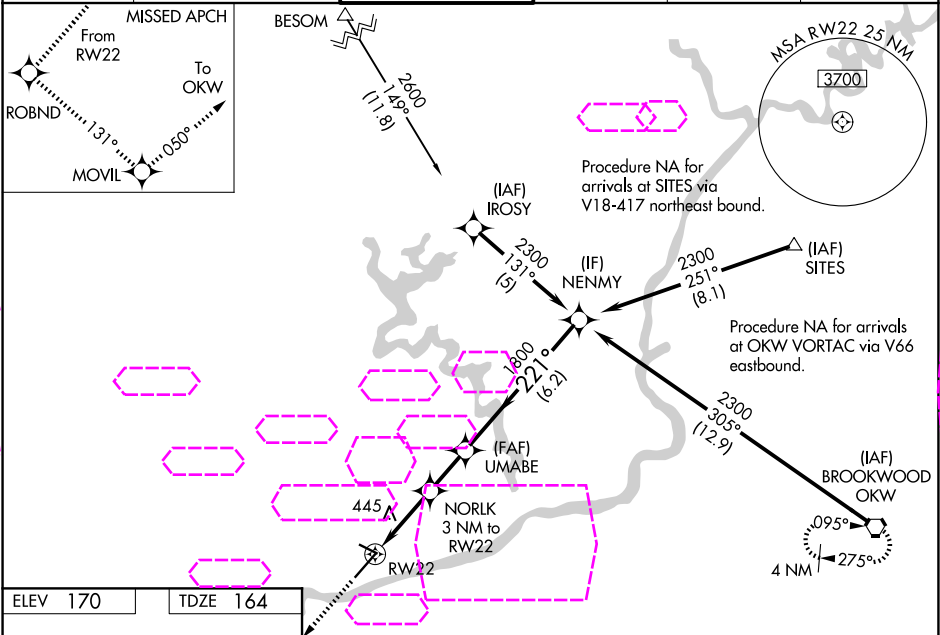
WAAS CH 81918 W22A	APP CRS 221°	Rwy Ldg TDZE 164 Apt Elev 170
--	------------------------	---

RNAV (GPS) RWY 22
TUSCALOOSA NTL (TCL)

⚠ For uncompensated Baro-VNAV systems, LNAV/VNAV NA below -15°C (5°F) or above 48°C (118°F). DME/DME RNP-0.3 NA. Helicopter visibility reduction below ¾ SM NA. When local altimeter setting not received, use Birmingham altimeter setting: increase LPV DA to 760 feet and all visibilities ½ SM; increase LNAV/VNAV DA to 937 feet and all visibilities ¾ SM; increase all MDAs 180 feet and visibility LNAV Cats C and D ½ SM and Circling Cat C ¾ SM and Cat D ½ SM. Baro-VNAV and VDP NA when using Birmingham altimeter setting. Circling Rwy 12, 30 NA at night.

MISSED APPROACH: Climb to 2500 direct ROBND and left turn on track 131° to MOVIL and on 050° track to OKW VORTAC and hold.

ASOS 132.825	BIRMINGHAM APP CON 120.15 269.25	TUSCALOOSA TOWER ★ 126.3(CTAF) 0 256.7	GND CON 121.8 257.95	CLNC DEL 120.775	UNICOM 122.95
------------------------	--	---	--------------------------------	----------------------------	-------------------------



MIRL Rwy 12-30
HIRL Rwy 4-22

2500	ROBND	fr 131°	MOVL	fr 050°	OKW	VGSI and RNAV glidepath not coincident (VGSI Angle 3.00°/TCH 50).			
						Procedure Turn NA			
*LNAV only.						NENMY			
NORLK 3 NM to RW22						UMABE 1800		2300	
1.5 NM to RW22						1160		GP 3.00° TCH 60	
RW22						1800			
1.5						1.5		1.9 NM	
CATEGORY						A		B	
LPV DA						582-1½		418 (500-1½)	
LNAV/VNAV DA						759-2		595 (600-2)	
LNAV MDA						700-1 536 (600-1)		700-1½ 536 (600-1½)	
CIRCLING						720-1 550 (600-1)		700-1¾ 536 (600-1¾)	
						800-1 630 (700-1)		960-2½ 790 (800-2½)	
								960-2½ 790 (800-2½)	

TUSCALOOSA, ALABAMA
Amdt 1B 14JUL22

33°13'N-87°37'W

RNAV (GPS) RWY 22
TUSCALOOSA NTL (TCL)