

TUSCALOOSA, ALABAMA

AL-487 (FAA)

24137

LOC I-TCL 109.1 Chan 28	APP CRS 041°	Rwy Idg 6498 TDZE 160 Apt Elev 170
--------------------------------------	------------------------	---

ILS or LOC RWY 4

TUSCALOOSA NTL (TCL)

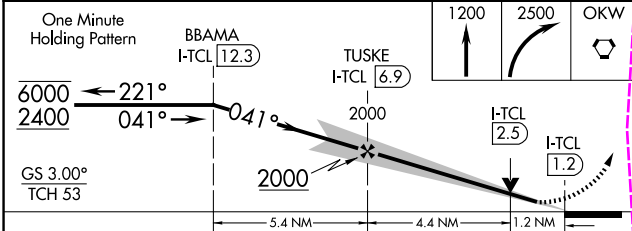
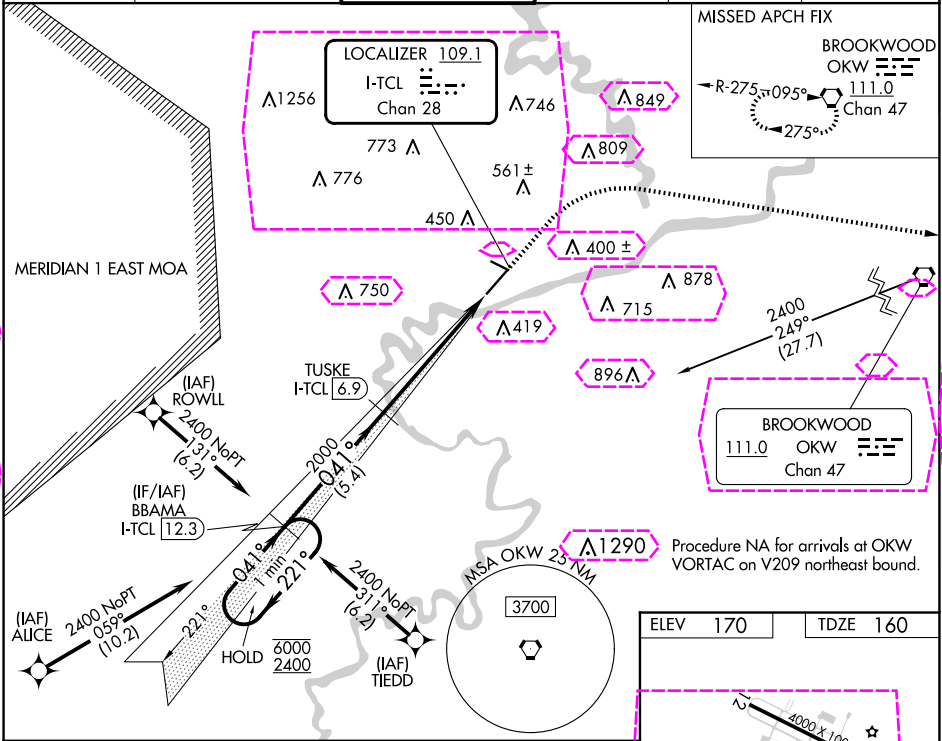
RNP APCH - GPS. From ALICE, TIEDD or ROWLL.
DME required.

MALSR

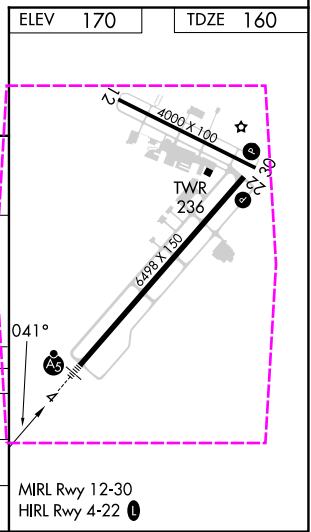
MISSED APPROACH: Climb to 1200 then climbing right turn to 2500 direct OKW VORTAC and hold.

Circling Rwy 12, 30 NA at night.

ASOS 132.825	BIRMINGHAM APP CON 120.15 269.25	TUSCALOOSA TOWER ★ 126.3 (CTAF) 0 256.7	GND CON 121.8 257.95	CLNC DEL 120.775	UNICOM 122.95
------------------------	--	---	--------------------------------	----------------------------	-------------------------



CATEGORY	A	B	C	D
S-ILS 4		360-1/2	200 (200-1/2)	
S-LOC 4	600-1/2	440 (500-1/2)	600-3/4	440 (500-3/4)
CIRCLING	720-1 550 (600-1)	800-1 630 (700-1)	960-2 1/4 790 (800-2 1/4)	960-2 1/2 790 (800-2 1/2)



TUSCALOOSA, ALABAMA
Amdt 16 20APR23

33°13'N-87°37'W

TUSCALOOSA NTL (TCL)
ILS or LOC RWY 4

SE-4, 10 JUL 2025 to 07 AUG 2025

SE-4, 10 JUL 2025 to 07 AUG 2025

TUSCALOOSA, ALABAMA

AL-487 (FAA)

25219

LOC I-TCL 109.1 Chan 28	APP CRS 041°	Rwy Ldg TDZE 160 Apt Elev 170
--------------------------------------	------------------------	---

ILS or LOC RWY 4

TUSCALOOSA NTL (TCL)

RNP APCH - GPS. From ALICE, TIEDD or ROWLL.

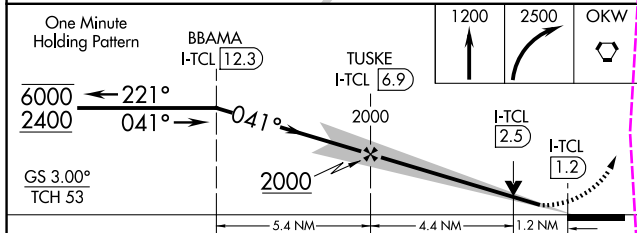
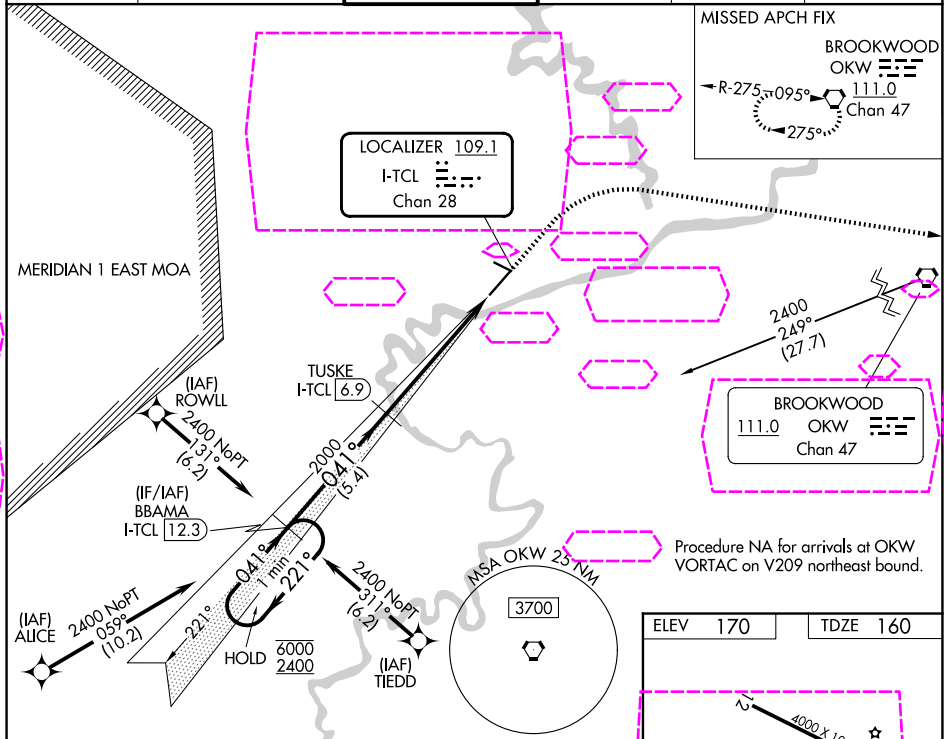
DME required.



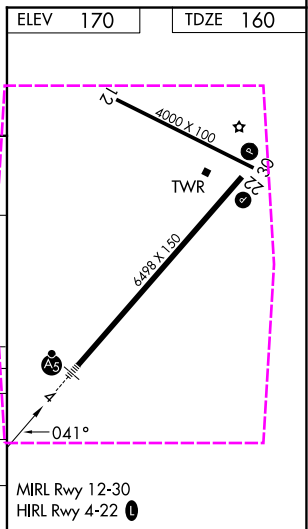
MISSED APPROACH: Climb to 1200 then climbing right turn to 2500 direct OKW VORTAC and hold.

T
A Circling Rwy 12, 30 NA at night.

ASOS 132.825	BIRMINGHAM APP CON 120.15 269.25	TUSCALOOSA TOWER ★ 126.3 (CTAF) 0 256.7	GND CON 121.8 257.95	CLNC DEL 120.775	UNICOM 122.95
------------------------	--	--	--------------------------------	----------------------------	-------------------------



CATEGORY	A	B	C	D
S-ILS 4		360-1/2	200 (200-1/2)	
S-LOC 4	600-1/2	440 (500-1/2)	600-3/4	440 (500-3/4)
CIRCLING	720-1 550 (600-1)	800-1 630 (700-1)	960-2 1/4 790 (800-2 1/4)	960-2 1/2 790 (800-2 1/2)



TUSCALOOSA, ALABAMA
Amdt 16 20APR23

33°13'N-87°37'W

TUSCALOOSA NTL (TCL)

ILS or LOC RWY 4

SE-4, 07 AUG 2025 to 04 SEP 2025

SE-4, 07 AUG 2025 to 04 SEP 2025