

ATLANTA, GEORGIA


AL-469 (FAA)

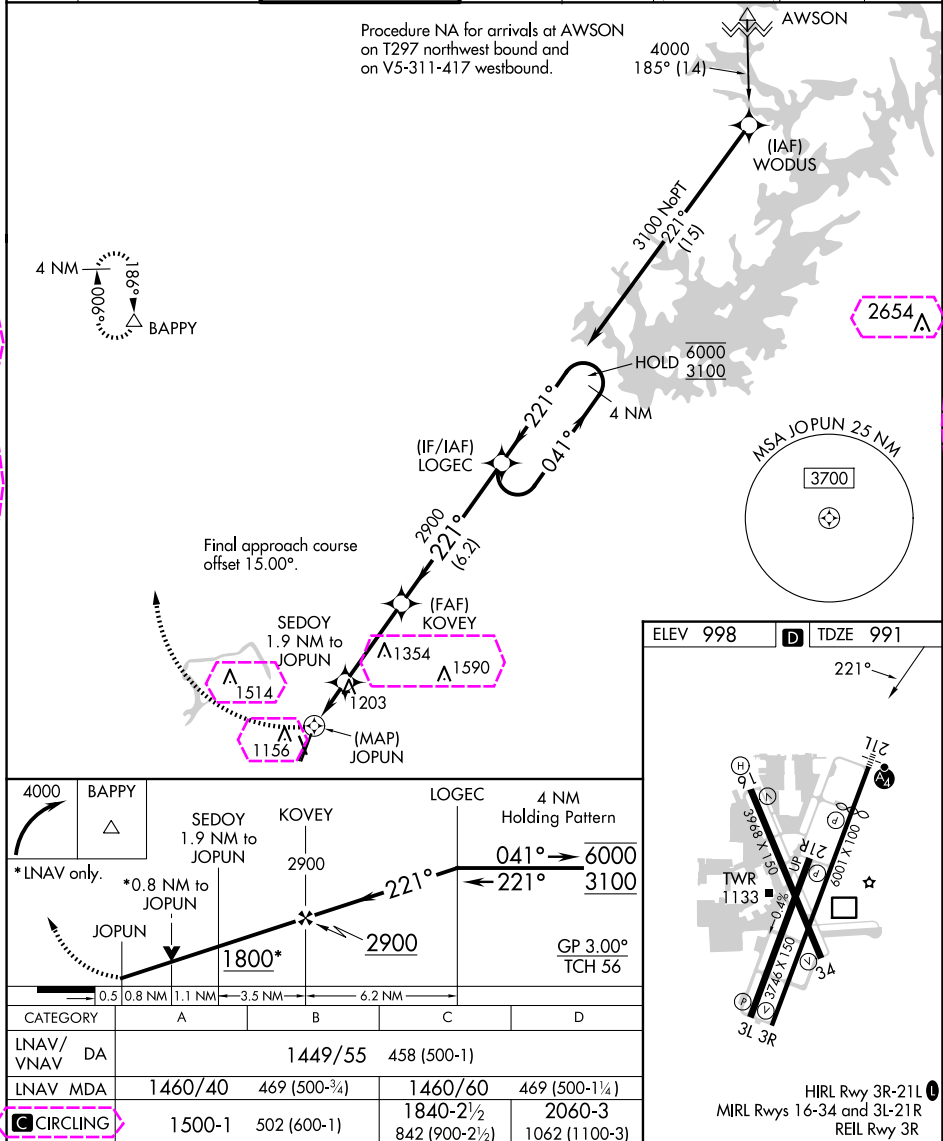
24361

APP CRS 221°	Rwy Idg 4996 TDZE 991 Apt Elev 998
------------------------	---

RNAV (GPS) Y RWY 21L

DEKALB-PEACHTREE (PDK)

RNP APCH.				MALSF 	MISSED APPROACH: Climbing right turn to 4000 direct BAPPY and hold.		
▼ Circling Rwy 16, 34 NA at night. Rwy 21L helicopter visibility reduction below ¾ SM NA. For uncompensated Baro-VNAV systems, procedure NA below -8°C or above 54°C. For inop ALS, increase LNAV/VNAV all Cats visibility to 1¾ SM and LNAV Cat A/B visibility to RVR 5500. ▲							
ATIS 128.4	ATLANTA APP CON 126.975 239.275	PEACHTREE TOWER★ 120.9 (CTAF) 281.5	GND CON 121.6	CLNC DEL 125.2	CLNC DEL 120.9 (When twr closed)	UNICOM 122.95	120.00



SE-4, 10 JUL 2025 to 07 AUG 2025

SE-4, 10 JUL 2025 to 07 AUG 2025

ATLANTA, GEORGIA

Amtd 2 07OCT21

33°53'N-84°18'W

RNAV (GPS) Y RWY 21L

DEKALB-PEACHTREE (PDK)

ATLANTA, GEORGIA


AL-469 (FAA)

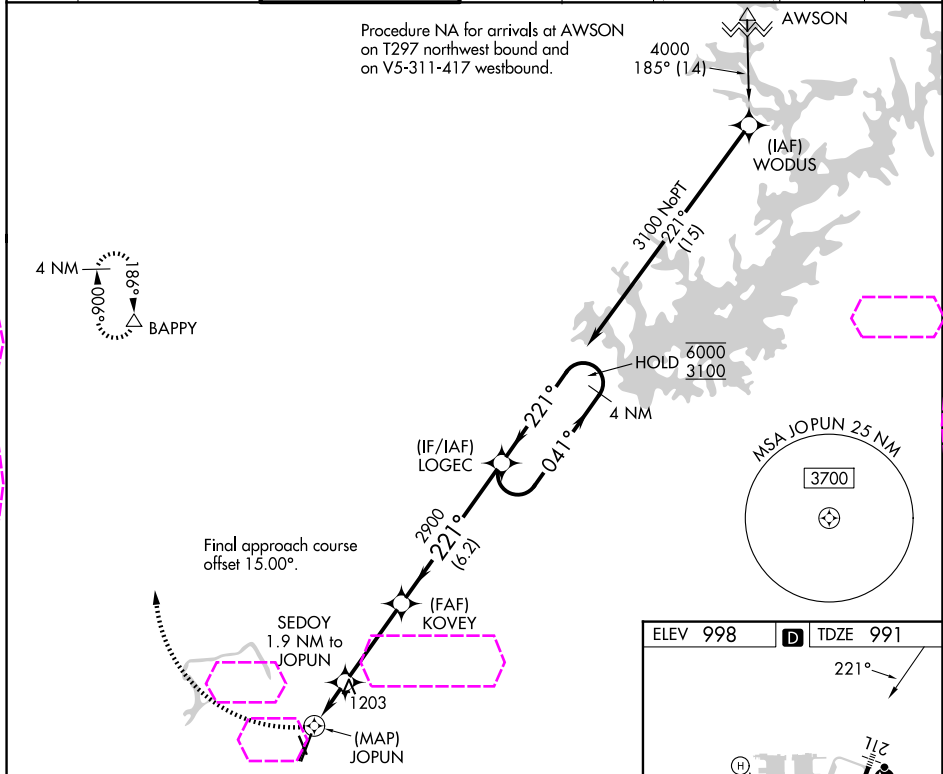
25219

APP CRS 221°	Rwy Ldg 4996 TDZE 991 Apt Elev 998
------------------------	---

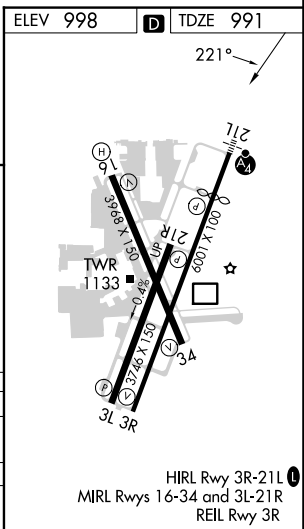
RNAV (GPS) Y RWY 21L

DEKALB-PEACHTREE (PDK)

RNP APCH.				MALSF 	MISSED APPROACH: Climbing right turn to 4000 direct BAPPY and hold.		
▼ Circling Rwy 16, 34 NA at night. Rwy 21L helicopter visibility reduction below ¾ SM NA. For uncompensated Baro-VNAV systems, procedure NA below -8°C or above 54°C. For inop ALS, increase LNAV/VNAV all Cats visibility to 1¾ SM and LNAV Cat A/B visibility to RVR 5500. ▲							
ATIS 128.4	ATLANTA APP CON 126.975 239.275	PEACHTREE TOWER★ 120.9 (CTAF) 281.5	GND CON 121.6	CLNC DEL 125.2	CLNC DEL 120.9 (When twr closed)	UNICOM 122.95	120.00



4000	BAPPY	SEDOTY 1.9 NM to JOPUN	KOVEY 2900	LOGEC	4 NM Holding Pattern
*LNAV only.		*0.8 NM to JOPUN	1800*	2900	6000 3100
0.5 0.8 NM		1.1 NM	3.5 NM	6.2 NM	GP 3.00° TCH 56
CATEGORY	A	B	C	D	
LNAV/ VNAV	DA	1449/55	458 (500-1)		
LNAV MDA	1460/40	469 (500-¾)	1460/60	469 (500-1¼)	
CIRCLING	1500-1	502 (600-1)	1840-2½ 842 (900-2½)	2060-3 1062 (1100-3)	



SE-4, 07 AUG 2025 to 04 SEP 2025

SE-4, 07 AUG 2025 to 04 SEP 2025

ATLANTA, GEORGIA

Amdt 2 07OCT21

33°53'N-84°18'W

RNAV (GPS) Y RWY 21L

DEKALB-PEACHTREE (PDK)