

ATLANTA, GEORGIA

AL-469 (FAA)

24361

APP CRS	Rwy Idg	4996
206°	TDZE	991
	Apt Elev	998

RNAV (RNP) Z RWY 21L

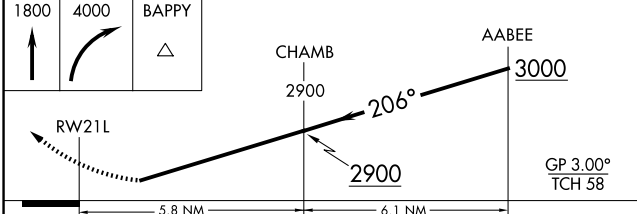
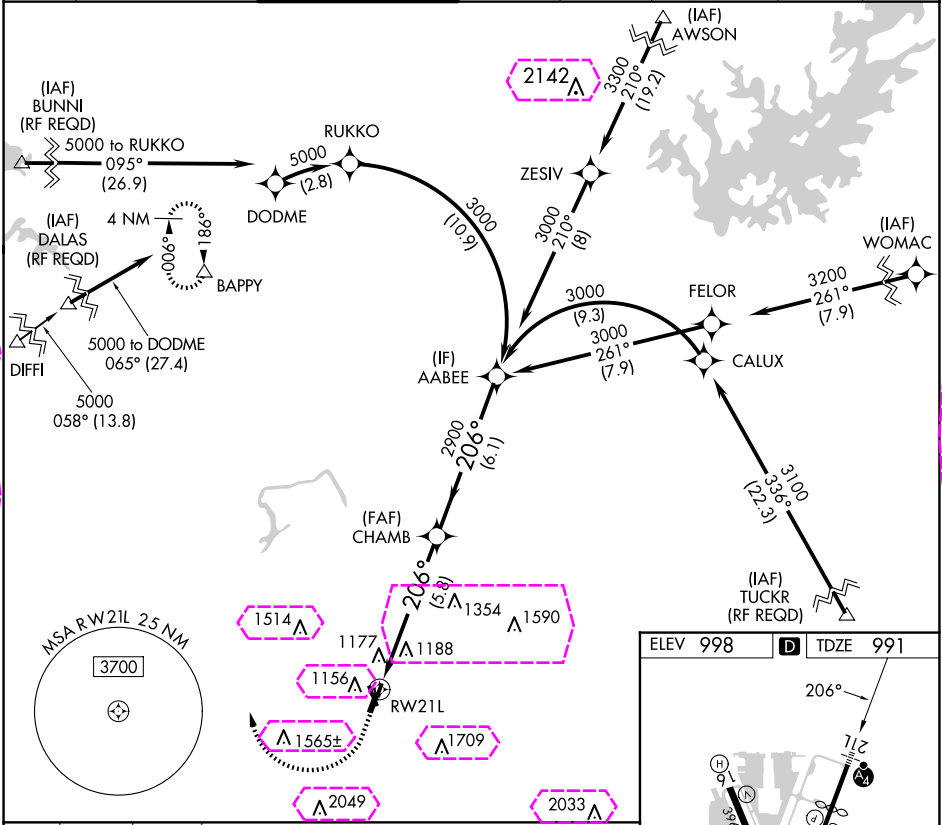
DEKALB-PEACHTREE (PDK)

⚠ For uncompensated Baro-VNAV systems, procedure NA below 1°C (37°F) or above 54°C (130°F). For inop MALSF, increase RNP 0.30 all Cats visibility to 1¾. GPS required.

MALSF

MISSED APPROACH: Climb to 1800 then climbing right turn to 4000 direct BAPPY and hold.

ATIS	ATLANTA APP CON	PEACHTREE TOWER ★	GND CON	CLNC DEL	CLNC DEL	UNICOM	
128.4	126.975 239.275	120.9(CTAF) 281.5	121.6	125.2	120.9 (When twr closed)	122.95	120.0



CATEGORY	A	B	C	D
RNP 0.30 DA	1502-1¾	511 (600-1¾)		

AUTHORIZATION REQUIRED

ELEV 998 **D** TDZE 991

206°

21L

3L 3R

3748 X 130

3748 X 130

34

3L 3R

HIRL Rwy 3R-21L **1**

MIRL Rwy 16-34 and 3L-21R

REIL Rwy 3R

ATLANTA, GEORGIA

Amdt 1A 30APR15

33°53'N-84°18'W

DEKALB-PEACHTREE (PDK)

RNAV (RNP) Z RWY 21L

ATLANTA, GEORGIA

AL-469 (FAA)

25219

APP CRS	Rwy Ldg	4996
206°	TDZE	991
	Apt Elev	998

RNAV (RNP) Z RWY 21L

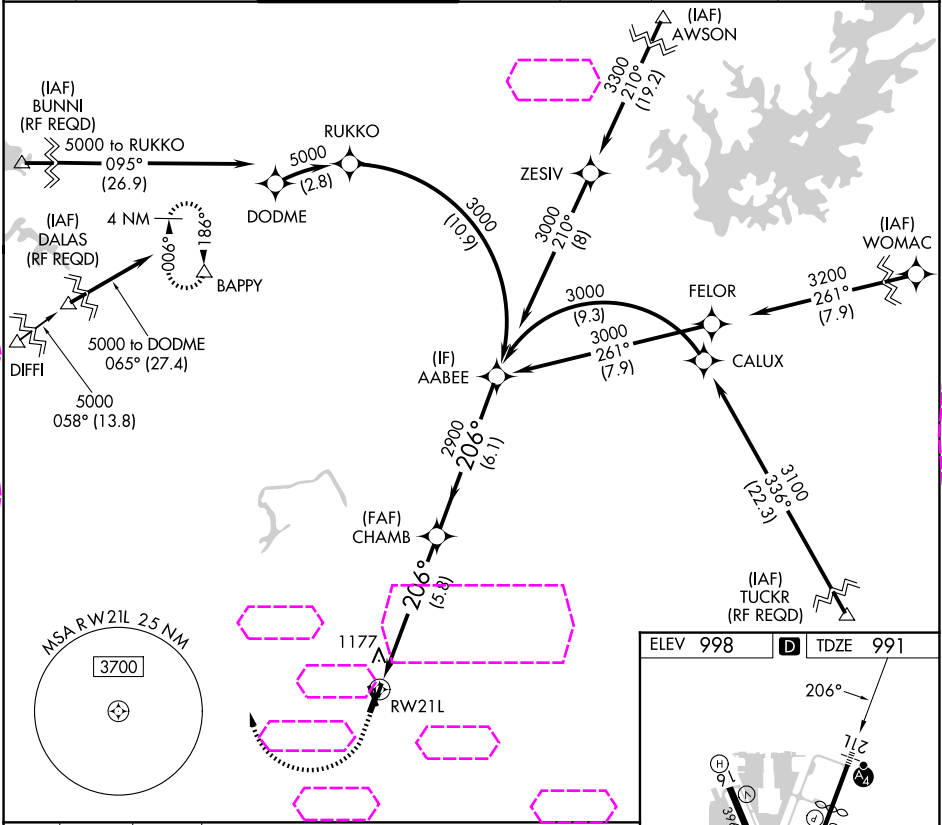
DEKALB-PEACHTREE (PDK)

⚠ For uncompensated Baro-VNAV systems, procedure NA below 1°C (37°F) or above 54°C (130°F). For inop MALSF, increase RNP 0.30 all Cats visibility to 1¾. GPS required.

MALSF

MISSED APPROACH: Climb to 1800 then climbing right turn to 4000 direct BAPPY and hold.

ATIS	ATLANTA APP CON	PEACHTREE TOWER ★	GND CON	CLNC DEL	CLNC DEL	UNICOM	
128.4	126.975 239.275	120.9(CTAF) 281.5	121.6	125.2	120.9 (When twr closed)	122.95	120.0



1800

4000

BAPPY

↑

↷

△

CHAMB 2900

AABEE 3000

RWY 21L

GP 3.00° TCH 58

5.8 NM

6.1 NM

CATEGORY	A	B	C	D
RNP 0.30 DA		1502-1¾	511 (600-1¾)	

AUTHORIZATION REQUIRED

ELEV 998

D TDZE 991

206°

21L

3L 3R

TWR 1133

3L 3R

3L 3R

HIRL Rwy 3R-21L

MIRL Rwy 16-34 and 3L-21R

REIL Rwy 3R

ATLANTA, GEORGIA

Amdt 1A 30APR15

33°53'N-84°18'W

DEKALB-PEACHTREE (PDK)

RNAV (RNP) Z RWY 21L