

ATLANTA, GEORGIA

AL-469 (FAA)

24361

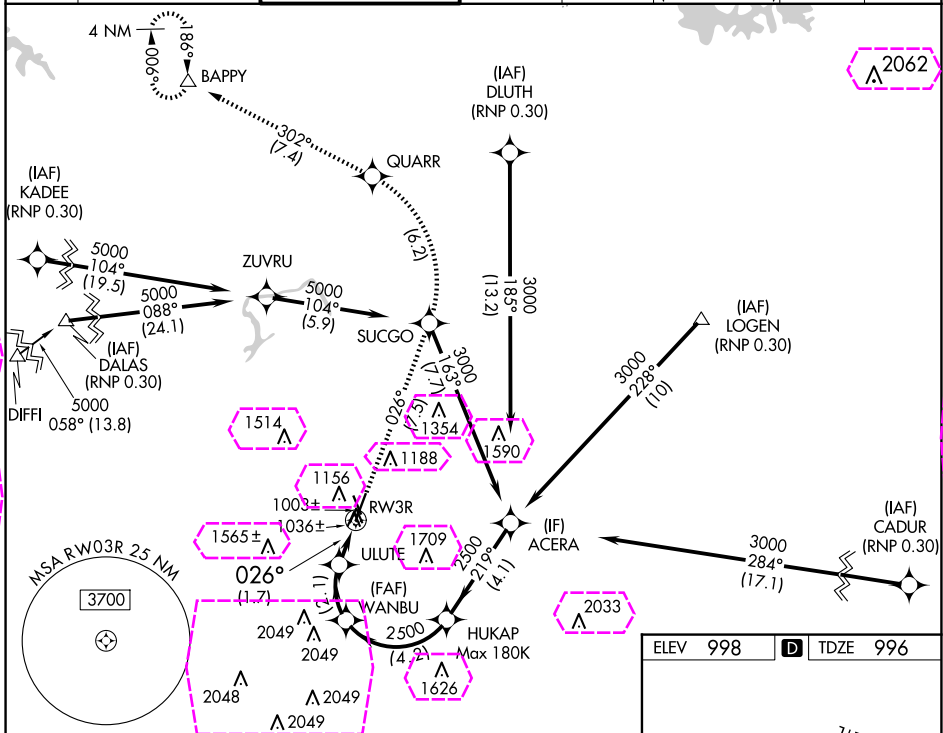
APP CRS	Rwy Idg	5411
026°	TDZE	996
	Apt Elev	998

RNAV (RNP) RWY 3R

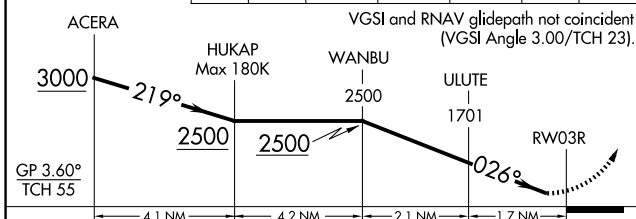
DEKALB-PEACHTREE (PDK)

<p>For uncompensated Baro-VNAV systems, procedure NA below 1°C (33°F) or above 45°C (114°F). RF required. GPS required.</p>	<p>MISSED APPROACH: Climb to 4000 on track 026° to SUCGO then left turn to QUARR then on track 302° to BAPPY and hold.</p>
---	--

ATIS 128.4	ATLANTA APP CON 126.975 239.275	PEACHTREE TOWER ★ 120.9(CTAF) 281.5	GND CON 121.6	CLNC DEL 125.2	CLNC DEL 120.9 (When twr closed)	UNICOM 122.95	120.0
---------------	------------------------------------	--	------------------	-------------------	--	------------------	-------

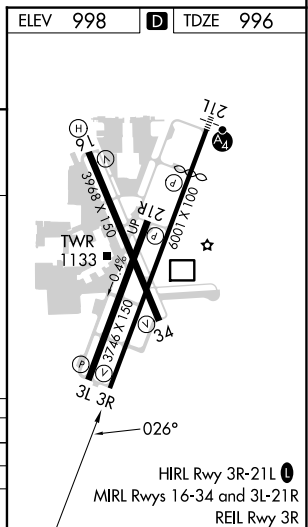


4000	tr 026°	SUCGO	QUARR	tr 302°	BAPPY
------	---------	-------	-------	---------	-------



CATEGORY	A	B	C	D
RNP 0.10 DA	1334-1	338 (400-1)		NA
RNP 0.30 DA	1441-1 3/8	445 (500-1 3/8)		NA

AUTHORIZATION REQUIRED



ATLANTA, GEORGIA

Amdt 2A 30APR15

33°53'N-84°18'W

DEKALB-PEACHTREE (PDK) RNAV (RNP) RWY 3R

ATLANTA, GEORGIA

AL-469 (FAA)

25219

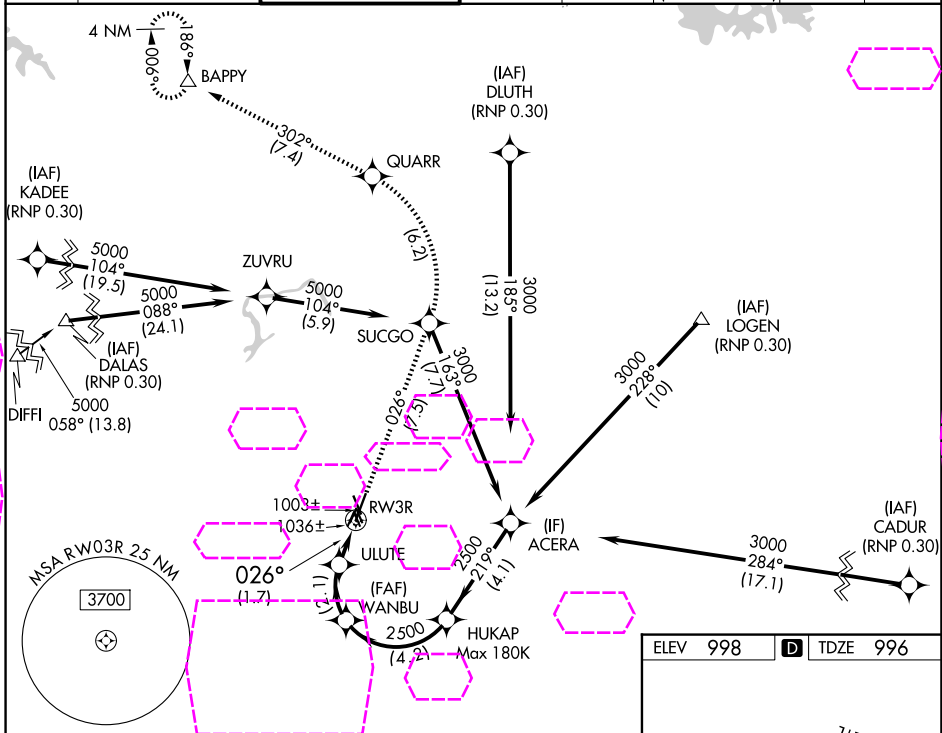
APP CRS	Rwy Ldg	5411
026°	TDZE	996
	Apt Elev	998

RNAV (RNP) RWY 3R

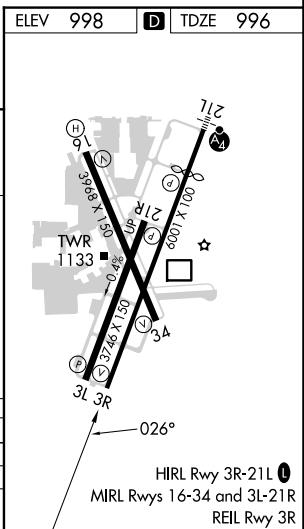
DEKALB-PEACHTREE (PDK)

<p>For uncompensated Baro-VNAV systems, procedure NA below 1°C (33°F) or above 45°C (114°F). RF required. GPS required.</p>	<p>MISSED APPROACH: Climb to 4000 on track 026° to SUCGO then left turn to QUARR then on track 302° to BAPPY and hold.</p>
---	--

ATIS 128.4	ATLANTA APP CON 126.975 239.275	PEACHTREE TOWER ★ 120.9(CTAF) 281.5	GND CON 121.6	CLNC DEL 125.2	CLNC DEL 120.9 (When twr closed)	UNICOM 122.95	120.0
---------------	------------------------------------	--	------------------	-------------------	--	------------------	-------



	4000	SUCGO	QUARR	BAPPY
	↑	tr 026°	↩	tr 302°
				△
	ACERA	HUKAP Max 180K	WANBU	ULUTE
	3000	2500	2500	1701
	GP 3.60°			RW03R
	TCH 55			
	4.1 NM	4.2 NM	2.1 NM	1.7 NM
CATEGORY	A	B	C	D
RNP 0.10 DA	1334-1	338 (400-1)		NA
RNP 0.30 DA	1441-1 3/8	445 (500-1 3/8)		NA
AUTHORIZATION REQUIRED				



ATLANTA, GEORGIA
Amdt 2A 30APR15

33°53'N-84°18'W

DEKALB-PEACHTREE (PDK)
RNAV (RNP) RWY 3R