


ATLANTA, GEORGIA

AL-469 (FAA)

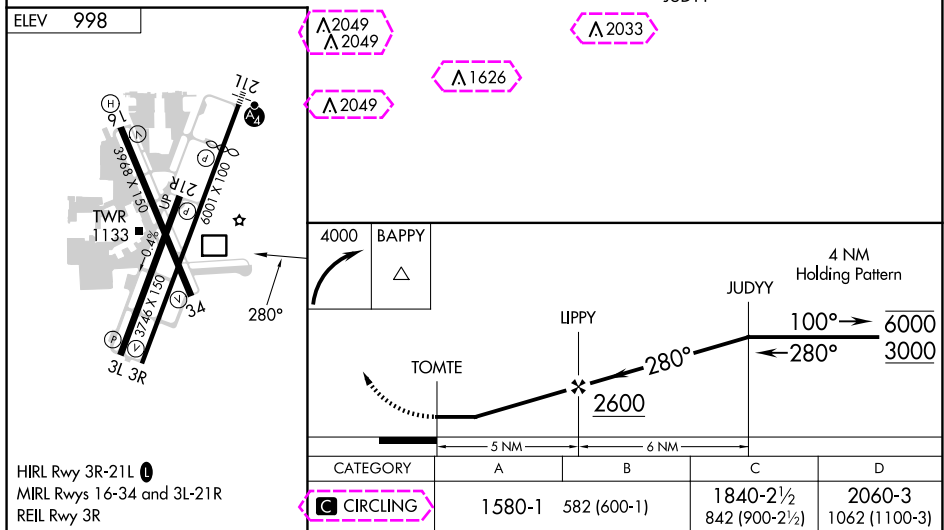
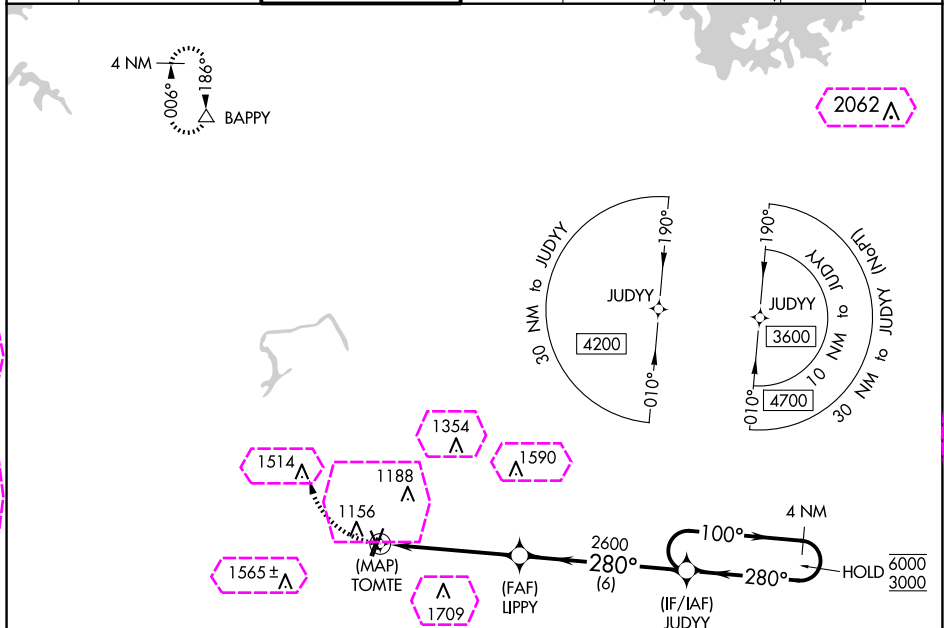
24361

APP CRS	Rwy Idg	N/A
280°	TDZE	N/A
	Apt Elev	998

# RNAV (GPS)-A DEKALB-PEACHTREE (PDK)

RNP APCH.	MISSED APPROACH: Climbing right turn to 4000 direct BAPPY and hold.
 Circling Rwy 16, 34 NA at night.	

ATIS 128.4	ATLANTA APP CON 126.975 239.275	PEACHTREE TOWER ★ 120.9 (CTAF) 281.5	GND CON 121.6	CLNC DEL 125.2	CLNC DEL 120.9 (When twr closed)	UNICOM 122.95	120.0
---------------	------------------------------------	---	------------------	-------------------	--	------------------	-------



ATLANTA, GEORGIA

Orig-A 31DEC20

33°53'N-84°18'W

# DEKALB-PEACHTREE (PDK) RNAV (GPS)-A

ATLANTA, GEORGIA

AL-469 (FAA)

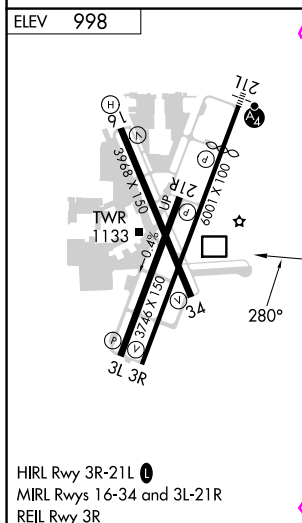
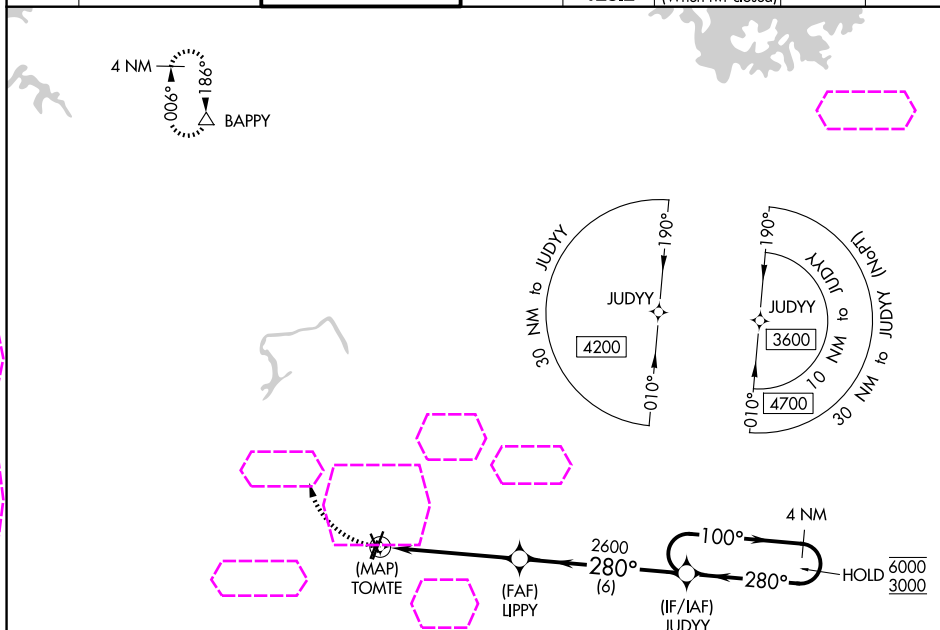
25219

APP CRS	Rwy Ldg	N/A
280°	TDZE	N/A
	Apt Elev	998

# RNAV (GPS)-A

## DEKALB-PEACHTREE (PDK)

RNP APCH.			MISSED APPROACH: Climbing right turn to 4000 direct BAPPY and hold.			
Circling Rwy 16, 34 NA at night.						
ATIS	ATLANTA APP CON	PEACHTREE TOWER ★	GND CON	CLNC DEL	CLNC DEL	UNICOM
128.4	126.975 239.275	120.9 (CTAF) 281.5	121.6	125.2	120.9 (When twr closed)	122.95
						120.0



4000 BAPPY		4 NM Holding Pattern	
TOMTE		JUDYY	
2600		100° 280°	
5 NM		6 NM	
CATEGORY	A	B	C
CIRCLING	1580-1	582 (600-1)	1840-2½ 842 (900-2½)
			2060-3 1062 (1100-3)

ATLANTA, GEORGIA

Orig-A 31DEC20

33°53'N-84°18'W

DEKALB-PEACHTREE (PDK)

RNAV (GPS)-A

SE-4, 07 AUG 2025 to 04 SEP 2025