

SE-4, 10 JUL 2025 to 07 AUG 2025

ATLANTA, GEORGIA

AL-469 (FAA)

25219

LOC/DME I-PDK 111.1 Chan 48	APP CRS 206°	Rwy Ldg TDZE 991 Apt Elev 998
--	------------------------	---

ILS or LOC RWY 21L

DEKALB-PEACHTREE (PDK)

RADAR required for procedure entry. DME or RADAR required.

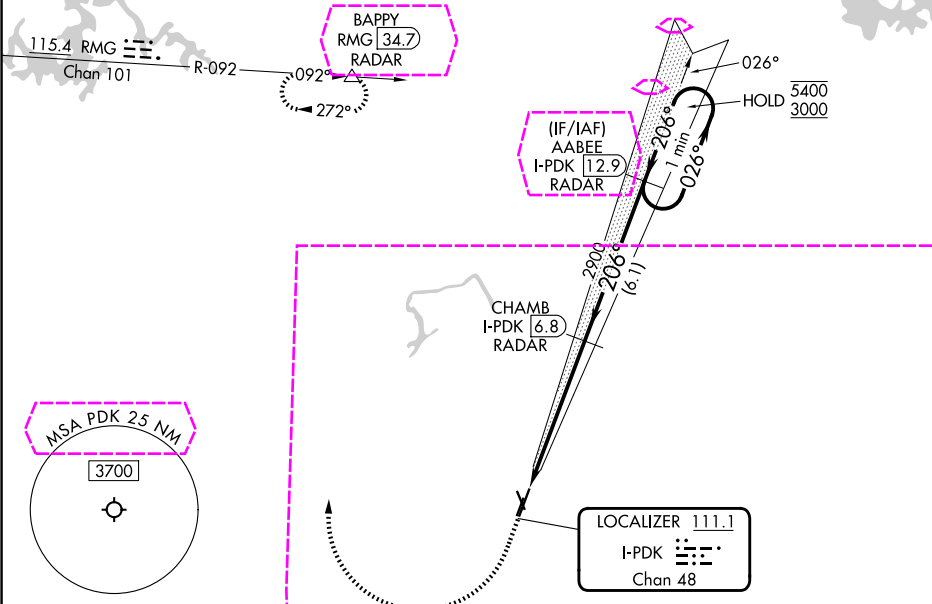
⚠ Circling Rwy 16, 34 NA at night. Rwy 21L helicopter visibility reduction below RVR 4000 NA.

MALSF

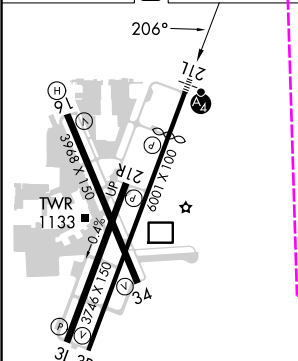


MISSED APPROACH: Climb to 1600 then climbing right turn to 4000 on heading 008° and on RMG VORTAC R-092 to BAPPY/RMG 34.7 DME/RADAR and hold.

ATIS 128.4	ATLANTA APP CON 126.975 239.275	PEACHTREE TOWER ★ 120.9 (CTAF) 281.5	GND CON 121.6	CLNC DEL 125.2	CLNC DEL 120.9 (When twr closed)	UNICOM 122.95	120.0
----------------------	---	--	-------------------------	--------------------------	---	-------------------------	--------------



ELEV 998	D	TDZE 991
----------	----------	----------



1600	4000	RMG R-092	BAPPY	VGSI and ILS glidepath not coincident (VGSI Angle 3.00/TCH 55).	One Minute Holding Pattern
↑	hdg 008°		△		
Glide slope unusable for coupled approach below 1900.				CHAMB I-PDK 6.8 RADAR	AABEE I-PDK 12.9 RADAR
				I-PDK 0.9	I-PDK 2.4
				2900	2900
				1.5 NM	4.3 NM
				6.1 NM	
				GS 3.00° TCH 58	

CATEGORY	A	B	C	D
S-ILS 21L	1330/40 339 (400-3/4)			
S-LOC 21L	1520/40	529 (600-3/4)	1520-1 1/4	529 (600-1 1/4)
CIRCLING	1520-1	522 (600-1)	1840-2 1/2	2060-3
			842 (900-2 1/2)	1062 (1100-3)

ATLANTA, GEORGIA

Amdt 10 07AUG25

33°53'N-84°18'W

DEKALB-PEACHTREE (PDK)

ILS or LOC RWY 21L

SE-4, 07 AUG 2025 to 04 SEP 2025