

WINSTON SALEM, NORTH CAROLINA

AL-463 (FAA)

24361

| | | |
|--|------------------------|---|
| WAAS CH 82011 W33A | APP CRS 332° | Rwy Idg 6655 TDZE 941 Apt Elev 969 |
|--|------------------------|---|

RNAV (GPS) RWY 33

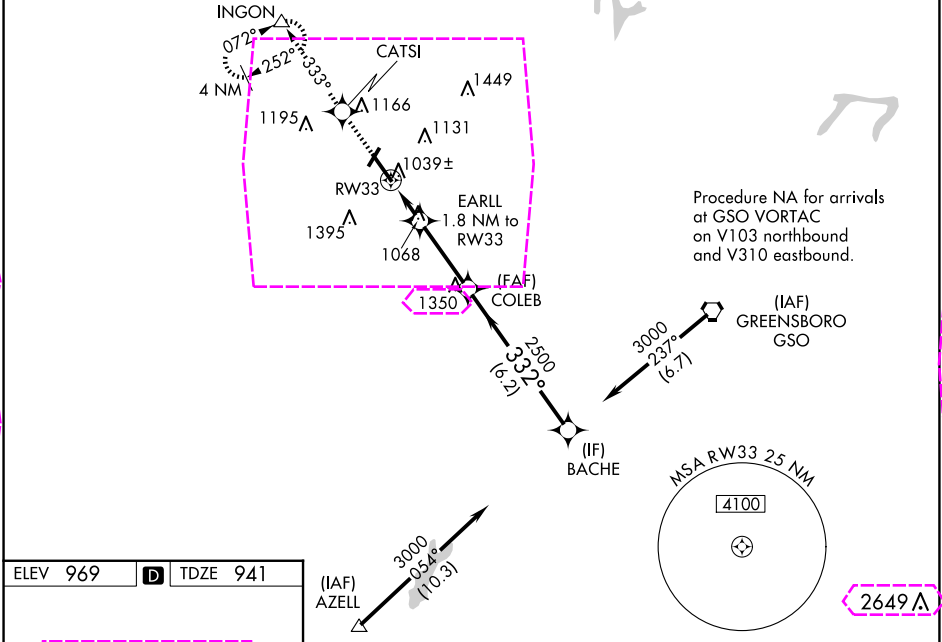
SMITH REYNOLDS (INT)

⚠ For inoperative MALSR, when using Piedmont Triad Intl altimeter setting, increase LPV all Cats visibility to 1 mile. Baro-VNAV NA when using Piedmont Triad Intl altimeter setting. For uncompensated Baro-VNAV systems, LNAV/VNAV NA below -16°C (4°F) or above 47°C (116°F). DME/DME RNP-0.3 NA. When local altimeter setting not received, use Piedmont Triad Intl altimeter setting; increase LPV DA to 1180 feet, LNAV/VNAV DA to 1446 feet and visibility all Cats ¼ SM; increase all MDA 40 feet and Circling visibility Cats C/D ¼ SM. ** RVR 1800 authorized with use of FD or AP or HUD to DA, NA when using Piedmont Triad Intl altimeter setting. Circling Rwy 4, 22 NA at night.

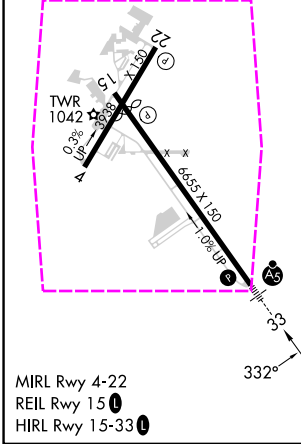
MALSR

MISSED APPROACH:
Climb to 3500 direct CATSI and on 333° track to INCON and hold, continue climb-in-hold to 3500.

| | | | | |
|----------------------|---|---|--------------------------|-------------------------|
| ATIS 121.3 | GREENSBORO APP CON 124.35 269.225 | WINSTON-SALEM TOWER ★ 123.75 (CTAF) 0 257.8 | GND CON 128.25 | UNICOM 122.95 |
|----------------------|---|---|--------------------------|-------------------------|



| | | |
|----------|---|----------|
| ELEV 969 | D | TDZE 941 |
|----------|---|----------|



| | | | | |
|--------------|-----------------------|-----------------------|------------------------|-------------------------|
| 3500 | CATSI | tr 333° | INGON | BACHE |
| | | | | |
| *LNAV only. | | | | |
| | RW33 | EARLL 1.8 NM to RW33 | COLEB | 3000 |
| | | 1520* | | 332° |
| | | 2500 | | Procedure Turn NA |
| | | | | GP 3.00° TCH 57 |
| | 1.8 NM | 3 NM | 6.2 NM | |
| CATEGORY | A | B | C | D |
| LPV DA** | 1141/24 200 (200-½) | | | |
| LNAV/VNAV DA | 1407/60 466 (500-1¼) | | | |
| LNAV MDA | 1380/24 | 439 (500-½) | 1380/40 439 (500-¾) | 1380/50 439 (500-1) |
| CIRCLING | 1480-1 511 (600-1) | 1580-1 611 (700-1) | 1700-2 731 (800-2) | 1760-2½ 791 (800-2½) |

WINSTON SALEM, NORTH CAROLINA
Orig-E 12AUG21

36°08'N-80°13'W

RNAV (GPS) RWY 33

SMITH REYNOLDS (INT)

SE-2, 10 JUL 2025 to 07 AUG 2025

SE-2, 10 JUL 2025 to 07 AUG 2025

WINSTON SALEM, NORTH CAROLINA

AL-463 (FAA)

25219

| | | |
|--|------------------------|---|
| WAAS CH 82011 W33A | APP CRS 332° | Rwy Ldg 6655 TDZE 941 Apt Elev 969 |
|--|------------------------|---|

RNAV (GPS) RWY 33 **SMITH REYNOLDS (INT)**

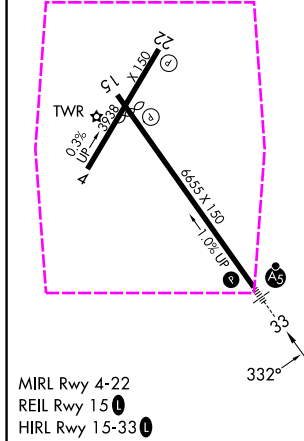
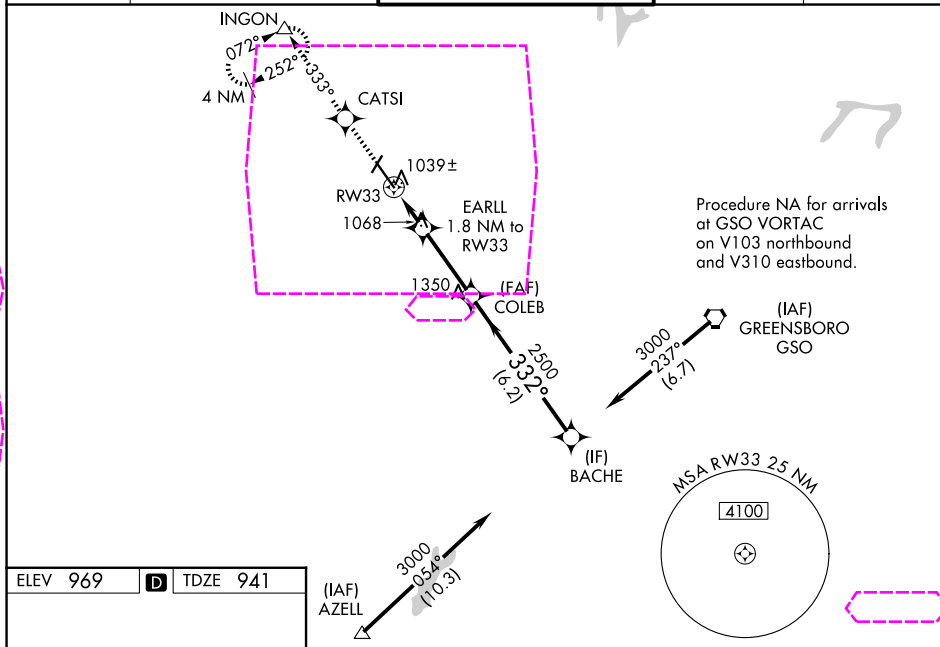
⚠ For inoperative MALSR, when using Piedmont Triad Intl altimeter setting, increase LPV all Cats visibility to 1 mile. Baro-VNAV NA when using Piedmont Triad Intl altimeter setting. For uncompensated Baro-VNAV systems, LNAV/VNAV NA below -16°C (4°F) or above 47°C (116°F). DME/DME RNP-0.3 NA. When local altimeter setting not received, use Piedmont Triad Intl altimeter setting; increase LPV DA to 1180 feet, LNAV/VNAV DA to 1446 feet and visibility all Cats ¼ SM; increase all MDA 40 feet and Circling visibility Cats C/D ¼ SM. ** RVR 1800 authorized with use of FD or AP or HUD to DA, NA when using Piedmont Triad Intl altimeter setting. Circling Rwy 4, 22 NA at night.

MALSR



MISSED APPROACH:
Climb to 3500 direct CATSI and on 333° track to INCON and hold, continue climb-in-hold to 3500.

| | | | | |
|----------------------|---|---|--------------------------|-------------------------|
| ATIS 121.3 | GREENSBORO APP CON 124.35 269.225 | WINSTON-SALEM TOWER ★ 123.75 (CTAF) 0 257.8 | GND CON 128.25 | UNICOM 122.95 |
|----------------------|---|---|--------------------------|-------------------------|



| | | | | |
|--------------|----------------------|----------------------|---------------------|----------------------|
| 3500 | CATSI | tr 333° | INGON | BACHE |
| | ⬆ | ✦ | △ | |
| *LNAV only. | | | | |
| | RW33 | EARLL 1.8 NM to RW33 | COLEB | 3000 |
| | | 1520* | | Procedure Turn NA |
| | | | | GP 3.00° TCH 57 |
| | 1.8 NM | 3 NM | 6.2 NM | |
| CATEGORY | A | B | C | D |
| LPV DA** | 1141/24 200 (200-½) | | | |
| LNAV/VNAV DA | 1407/60 466 (500-1¼) | | | |
| LNAV MDA | 1380/24 | 439 (500-½) | 1380/40 439 (500-¾) | 1380/50 439 (500-1) |
| CIRCLING | 1480-1 511 (600-1) | 1580-1 611 (700-1) | 1700-2 731 (800-2) | 1760-2½ 791 (800-2½) |

WINSTON SALEM, NORTH CAROLINA
Orig-E 12AUG21

36°08'N-80°13'W

SMITH REYNOLDS (INT)

RNAV (GPS) RWY 33

SE-2, 07 AUG 2025 to 04 SEP 2025

SE-2, 07 AUG 2025 to 04 SEP 2025