

WINSTON SALEM, NORTH CAROLINA

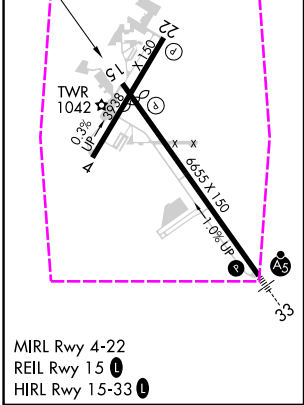
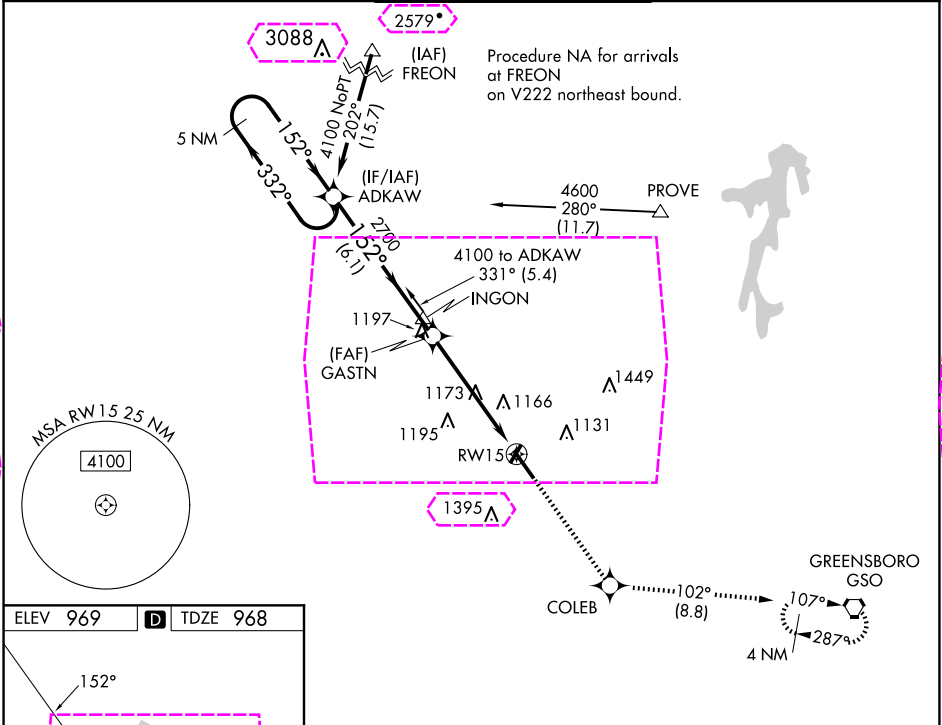
AL-463 (FAA)





24361

APP CRS	Rwy Idg	6069
152°	TDZE	968
	Apt Elev	969

RNAV (GPS) RWY 15  
SMITH REYNOLDS (INT)

RNP APCH.		MISSED APPROACH: Climb to 3000 direct COLEB and on track 102° to GSO VORTAC and hold.		
When local altimeter setting not received, use Piedmont Triad Intl altimeter setting and increase all MDA 40 feet and Circling Cats C/D visibility ¼ SM. Circling Rwy 4, 22 NA at night. Rwy 15 helicopter visibility reduction below ¾ SM NA.				
ATIS	GREENSBORO APP CON	WINSTON-TOWER ★	GND CON	UNICOM
121.3	124.35 269.225	123.75 (CTAF) 0 257.8	128.25	122.95



VGSI and descent angles not coincident (VGSI Angle 3.00/TCH 38).				
<div><div><div>3000</div><div>↑</div></div><div><div>COLEB</div><div></div></div><div><div>tr 102°</div><div></div></div><div><div>GSO</div><div></div></div></div>				
<div><div><div>5 NM</div><div>Holding Pattern</div><div>4100</div><div>← 332°</div><div>152° →</div><div>ADKAW</div></div><div><div>GASTN</div><div>2700</div><div>152°</div><div>3.00°</div><div>TCH 56</div><div>6.1 NM</div><div>5.2 NM</div><div>RW15</div><div></div></div></div>				
CATEGORY	A	B	C	D
LNAV MDA	1440-1	472 (500-1)	1440-1 <sup>3</sup> / <sub>8</sub>	472 (500-1 <sup>3</sup> / <sub>8</sub> )
CIRCLING	1480-1 511 (600-1)	1580-1 611 (700-1)	1700-2 731 (800-2)	1760-2 <sup>1</sup> / <sub>2</sub> 791 (800-2 <sup>1</sup> / <sub>2</sub> )

WINSTON SALEM, NORTH CAROLINA  
Amdt 1D 20MAY21

36°08'N-80°13'W

SMITH REYNOLDS (INT)  
RNAV (GPS) RWY 15

WINSTON SALEM, NORTH CAROLINA

AL-463 (FAA)

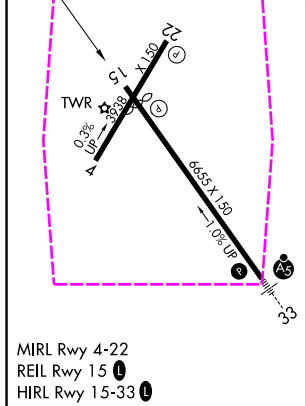
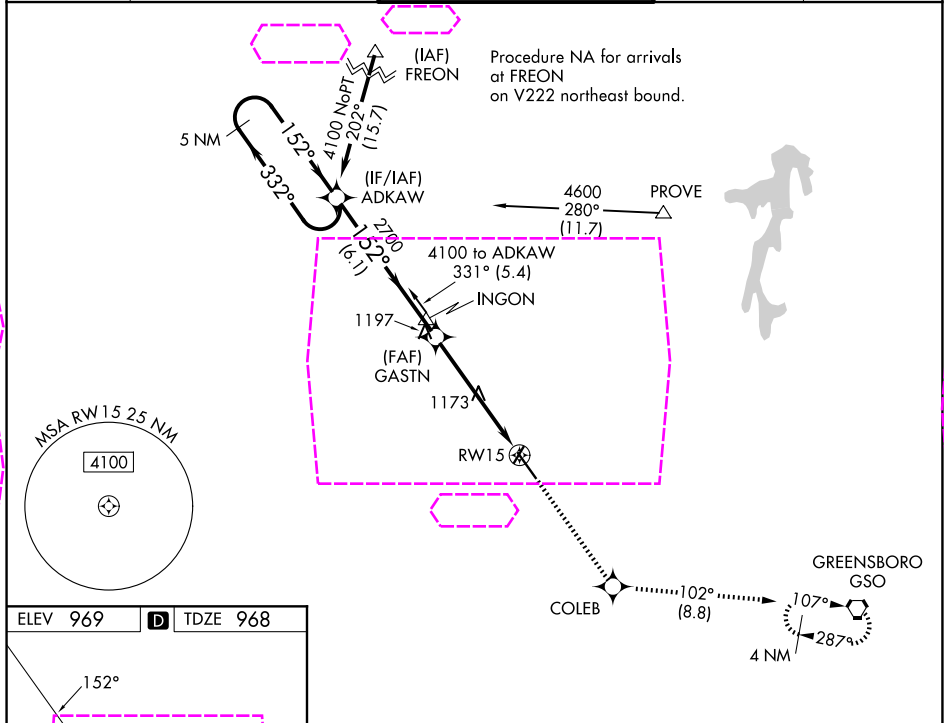
25219

APP CRS	Rwy Ldg	6069
152°	TDZE	968
	Apt Elev	969

# RNAV (GPS) RWY 15

SMITH REYNOLDS (INT)

RNP APCH.		MISSED APPROACH: Climb to 3000 direct COLEB and on track 102° to GSO VORTAC and hold.		
When local altimeter setting not received, use Piedmont Triad Intl altimeter setting and increase all MDA 40 feet and Circling Cats C/D visibility ¼ SM. Circling Rwy 4, 22 NA at night. Rwy 15 helicopter visibility reduction below ¾ SM NA.				
ATIS	GREENSBORO APP CON	WINSTON-TOWER ★	GND CON	UNICOM
121.3	124.35 269.225	123.75 (CTAF) 0 257.8	128.25	122.95



VGSI and descent angles not coincident (VGSI Angle 3.00/TCH 38).		3000	COLEB	tr 102°	GSO
5 NM Holding Pattern		↑	✦		◡
4100 ← 332° 152° →					
ADKAW					
5 NM Holding Pattern					
4100 ← 332° 152° →					
ADKAW					
5 NM Holding Pattern					
4100 ← 332° 152° →					
ADKAW					
5 NM Holding Pattern					
4100 ← 332° 152° →					
ADKAW					
5 NM Holding Pattern					
4100 ← 332° 152° →					
ADKAW					
5 NM Holding Pattern					
4100 ← 332° 152° →					
ADKAW					
5 NM Holding Pattern					
4100 ← 332° 152° →					
ADKAW					
5 NM Holding Pattern					
4100 ← 332° 152° →					
ADKAW					
5 NM Holding Pattern					
4100 ← 332° 152° →					
ADKAW					
5 NM Holding Pattern					
4100 ← 332° 152° →					
ADKAW					
5 NM Holding Pattern					
4100 ← 332° 152° →					
ADKAW					
5 NM Holding Pattern					
4100 ← 332° 152° →					
ADKAW					
5 NM Holding Pattern					
4100 ← 332° 152° →					
ADKAW					
5 NM Holding Pattern					
4100 ← 332° 152° →					
ADKAW					
5 NM Holding Pattern					
4100 ← 332° 152° →					
ADKAW					
5 NM Holding Pattern					
4100 ← 332° 152° →					
ADKAW					
5 NM Holding Pattern					
4100 ← 332° 152° →					
ADKAW					
5 NM Holding Pattern					
4100 ← 332° 152° →					
ADKAW					
5 NM Holding Pattern					
4100 ← 332° 152° →					
ADKAW					
5 NM Holding Pattern					
4100 ← 332° 152° →					
ADKAW					
5 NM Holding Pattern					
4100 ← 332° 152° →					
ADKAW					
5 NM Holding Pattern					
4100 ← 332° 152° →					
ADKAW					
5 NM Holding Pattern					
4100 ← 332° 152° →					
ADKAW					
5 NM Holding Pattern					
4100 ← 332° 152° →					
ADKAW					
5 NM Holding Pattern					
4100 ← 332° 152° →					
ADKAW					
5 NM Holding Pattern					
4100 ← 332° 152° →					
ADKAW					
5 NM Holding Pattern					
4100 ← 332° 152° →					
ADKAW					
5 NM Holding Pattern					
4100 ← 332° 152° →					
ADKAW					
5 NM Holding Pattern					
4100 ← 332° 152° →					
ADKAW					
5 NM Holding Pattern					
4100 ← 332° 152° →					
ADKAW					
5 NM Holding Pattern					
4100 ← 332° 152° →					
ADKAW					
5 NM Holding Pattern					
4100 ← 332° 152° →					
ADKAW					
5 NM Holding Pattern					
4100 ← 332° 152° →					
ADKAW					
5 NM Holding Pattern					
4100 ← 332° 152° →					
ADKAW					
5 NM Holding Pattern					
4100 ← 332° 152° →					
ADKAW					
5 NM Holding Pattern					
4100 ← 332° 152° →					
ADKAW					
5 NM Holding Pattern					
4100 ← 332° 152° →					
ADKAW					
5 NM Holding Pattern					
4100 ← 332° 152° →					
ADKAW					
5 NM Holding Pattern					
4100 ← 332° 152° →					
ADKAW					
5 NM Holding Pattern					
4100 ← 332° 152° →					
ADKAW					
5 NM Holding Pattern					
4100 ← 332° 152° →					
ADKAW					
5 NM Holding Pattern					
4100 ← 332° 152° →					
ADKAW					
5 NM Holding Pattern					
4100 ← 332° 152° →					
ADKAW					
5 NM Holding Pattern					
4100 ← 332° 152° →					
ADKAW					
5 NM Holding Pattern					
4100 ← 332° 152° →					
ADKAW					
5 NM Holding Pattern					
4100 ← 332° 152° →					
ADKAW					
5 NM Holding Pattern					
4100 ← 332° 152° →					
ADKAW					
5 NM Holding Pattern					
4100 ← 332° 152° →					
ADKAW					
5 NM Holding Pattern					
4100 ← 332° 152° →					
ADKAW					
5 NM Holding Pattern					
4100 ← 332° 152° →					
ADKAW					
5 NM Holding Pattern					
4100 ← 332° 152° →					