

24361

LOC I-INT	APP CRS	Rwy Idg	6655
<u>110.3</u>	332°	TDZE	941
		Apt Elev	969

ILS or LOC RWY 33
SMITH REYNOLDS (INT)

RNP APCH-GPS. From AZELL.

RADAR required for non-GPS equipped aircraft.

T
A *RVR 1800 authorized with use of FD or AP or HUD to DA.

MALS^R

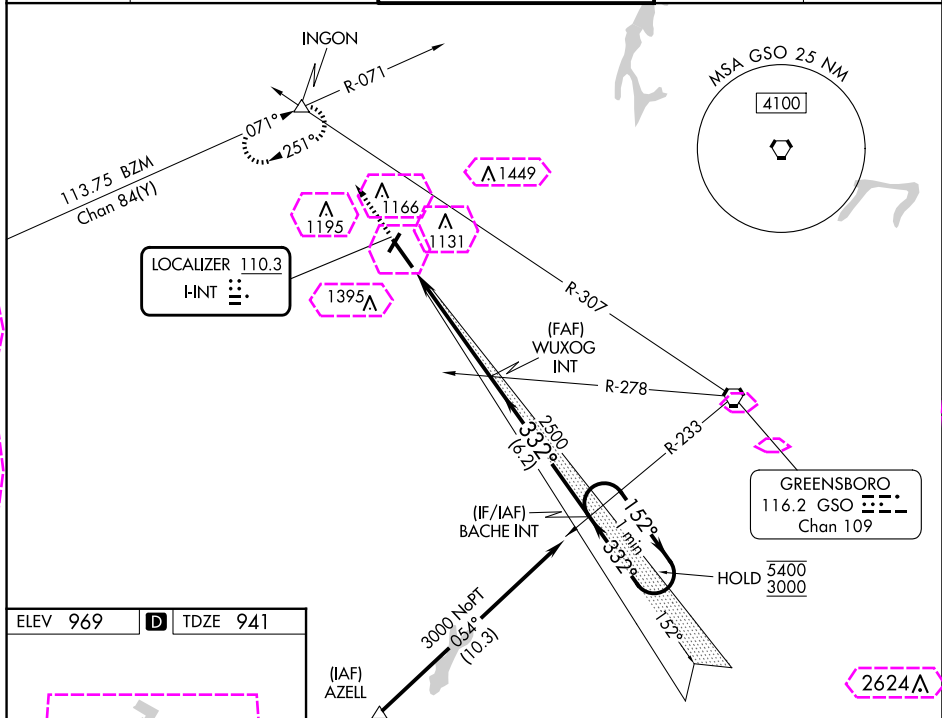
MISSED APPROACH: Climb to 1400 then climbing right turn to 3500 on heading 341° and GSO VORTAC R-307 to INCON INT and hold, continue climb-in-hold to 3500.

ATIS
121.3

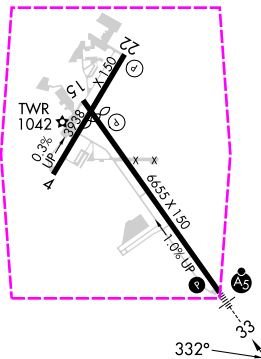
GREENSBORO APP CON
124.35 269.225

WINSTON-SALEM TOWER ★
123.75 (CTAF) 257.8

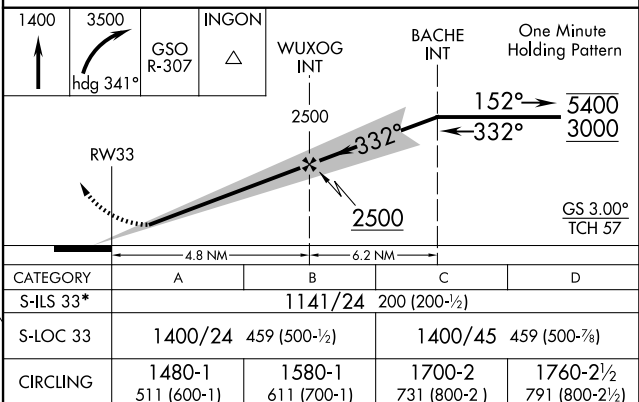
GND CON
128.25

UNICOM
122.95

ELEV 969	D	TDZE 941
----------	----------	----------



MIRL Rwy 4-22
REIL Rwy 15 **L**
HIRL Rwy 15-33 **L**



WINSTON SALEM, NORTH CAROLINA
Amdt 30 05OCT23

36°08'N-80°13'W

SMITH REYNOLDS (INT)

ILS or LOC RWY 33

25219

LOC I-INT	APP CRS	Rwy Ldg	6655
<u>110.3</u>	332°	TDZE	941
		Apt Elev	969

ILS or LOC RWY 33
SMITH REYNOLDS (INT)

RNP APCH-GPS. From AZELL.

RADAR required for non-GPS equipped aircraft.

*RVR 1800 authorized with use of FD or AP or HUD to DA.

MALSR



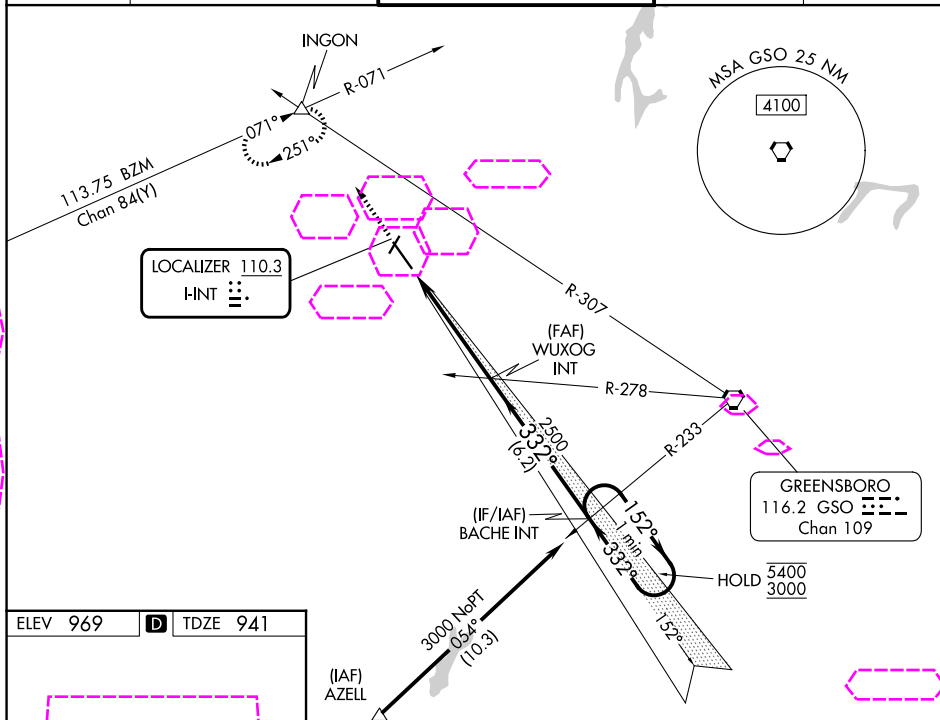
MISSED APPROACH: Climb to 1400 then climbing right turn to 3500 on heading 341° and GSO VORTAC R-307 to INCON INT and hold, continue climb-in-hold to 3500.

ATIS
121.3

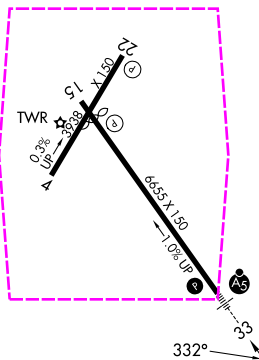
GREENSBORO APP CON
124.35 269.225

WINSTON-SALEM TOWER ★
123.75 (CTAF) **L** 257.8

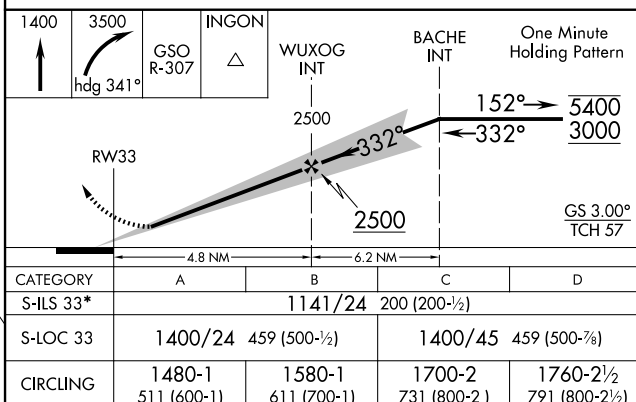
GND CON
128.25

UNICOM
122.95

ELEV 969	D	TDZE 941
----------	----------	----------



MIRL Rwy 4-22
REIL Rwy 15 **L**
HIRL Rwy 15-33 **L**



WINSTON SALEM, NORTH CAROLINA
Amdt 30 05OCT23

36°08'N-80°13'W

SMITH REYNOLDS (INT)

ILS or LOC RWY 33

SE-2, 07 AUG 2025 to 04 SEP 2025