

WINDSOR LOCKS, CONNECTICUT



AL-460 (FAA)

24249

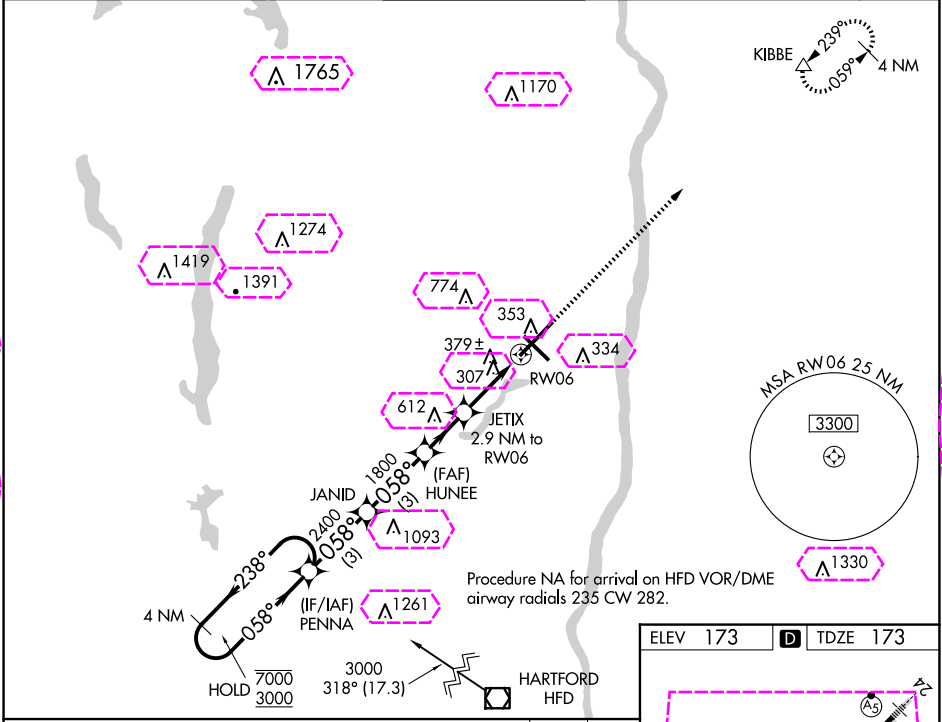
WAAS CH 70328 W06A	APP CRS 058°	Rwy Idg TDZE 173 Apt Elev 173	9509
--	------------------------	---	-------------

RNAV (GPS) Y RWY 6

BRADLEY INTL (BDL)

RNP APCH - GPS.		ALSIF-2 	MISSED APPROACH: Climb to 3000 direct KIBBE and hold.
	For uncompensated Baro-VNAV systems, LNAV/VNAV NA below -17°C or above 54°C.		

D-ATIS 118.15	BRADLEY APP CON 123.95 290.55 (061°-240°) 125.35 281.5 (241°-060°)	BRADLEY TOWER 120.3 351.8	GND CON 121.9 348.6	CLNC DEL 121.75 322.3	CPDLC
-------------------------	--	-------------------------------------	-------------------------------	---------------------------------	-------



4 NM Holding Pattern		VGSI and RNAV glidepath not coincident (VGSI Angle 3.00/TCH 71).			
GP 3.00° TCH 54		PENNA	JANID	HUNEE	JETIX
7000 3000		2400	1800	1160	1.2 NM to RW06
3 NM		3 NM	2 NM	1.7 NM	1.2
CATEGORY	A	B	C	D	
LPV DA	373/18 200 (300-½)				
LNAV/VNAV DA	640/50 467 (500-1)				
LNAV MDA	640/24	467 (500-½)	640/50	467 (500-1)	
CIRCLING	700-1	527 (600-1)	1120-2¾ 947 (1000-2¾)	1220-3 1047 (1100-3)	

ELEV 173	TDZE 173
HIRL Rwy 6-24 and 15-33 REIL Rwy 6 and 15 TDZ/CL Rwy 6 and 24	

WINDSOR LOCKS, CONNECTICUT

AL-460 (FAA)

25219

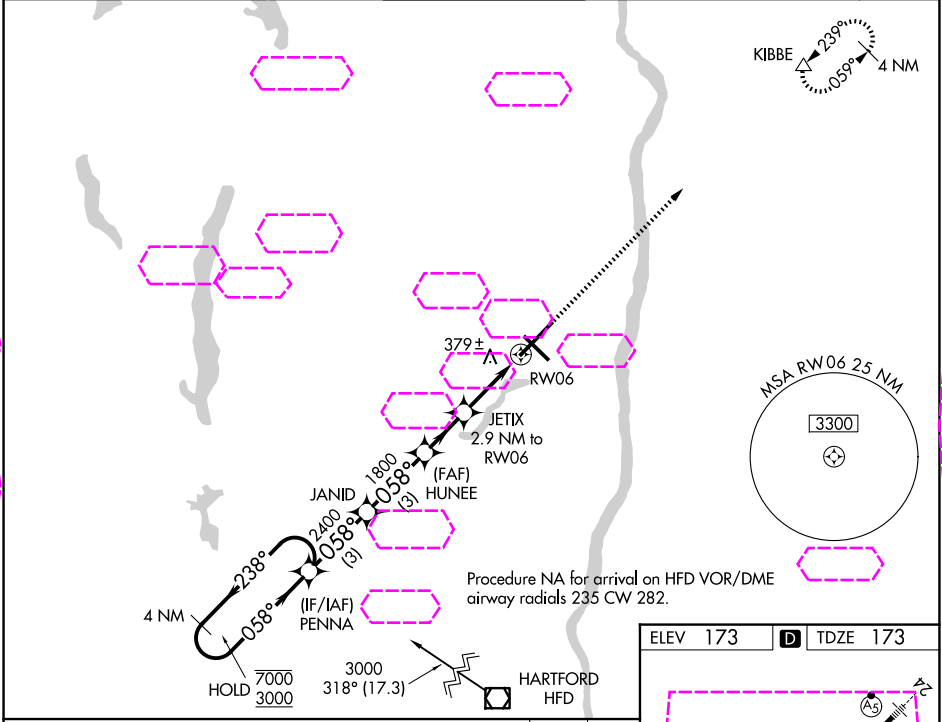
WAAS CH 70328 W06A	APP CRS 058°	Rwy Ldg TDZE 173 Apt Elev 173
--	------------------------	---

RNAV (GPS) Y RWY 6

BRADLEY INTL (BDL)

RNP APCH - GPS.		ALSIF-2	MISSED APPROACH: Climb to 3000 direct KIBBE and hold.	
For uncompensated Baro-VNAV systems, LNAV/VNAV NA below -17°C or above 54°C.				

D-ATIS 118.15	YANKEE APP CON 123.95 290.55 (061°-240°) 125.35 281.5 (241°-060°)	BRADLEY TOWER 120.3 351.8	GND CON 121.9 348.6	CLNC DEL 121.75 322.3	CPDLC
-------------------------	---	-------------------------------------	-------------------------------	---------------------------------	-------



4 NM Holding Pattern		VGSI and RNAV glidepath not coincident (VGSI Angle 3.00/TCH 71).				ELEV 173	TDZE 173			
7000 3000		PENNA	JANID	HUNEE	JETIX	3000	KIBBE			
GP 3.00° TCH 54		238°	058°	2400	1800	1160	1.2			
		3 NM	3 NM	2 NM	1.7 NM	1.2				
CATEGORY	A	B	C	D						
LPV DA	373/18 200 (300-½)									
LNAV/VNAV DA	640/50 467 (500-1)									
LNAV MDA	640/24	467 (500-½)	640/50	467 (500-1)						
CIRCLING	700-1	527 (600-1)	1120-2¾ 947 (1000-2¾)	1220-3 1047 (1100-3)						

