

WINDSOR LOCKS, CONNECTICUT


AL-460 (FAA)

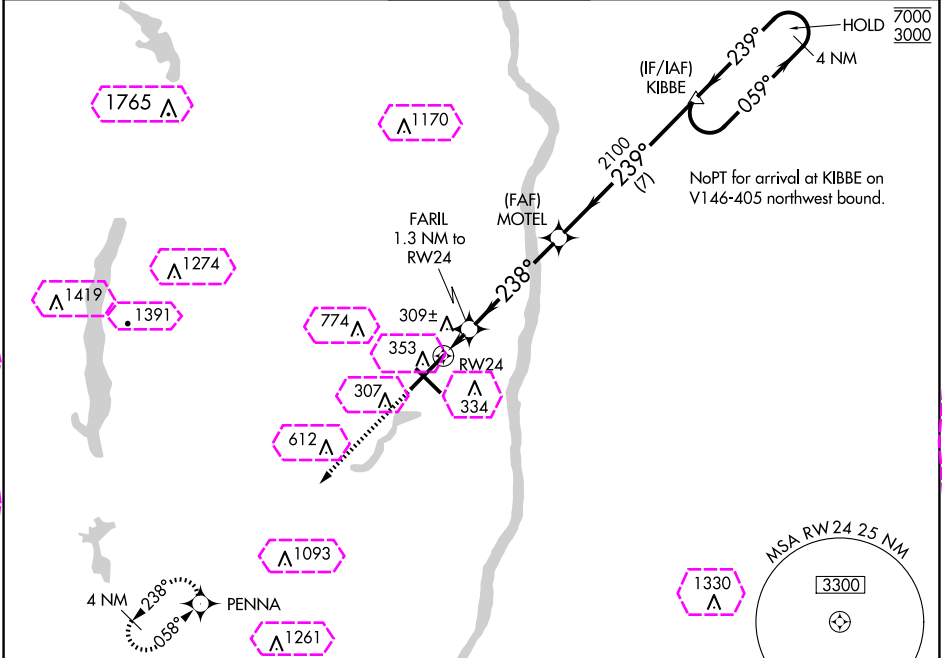
24249

WAAS CH 97310 W24A	APP CRS 238°	Rwy Idg TDZE 170 Apt Elev 173	9509
--	------------------------	---	-------------

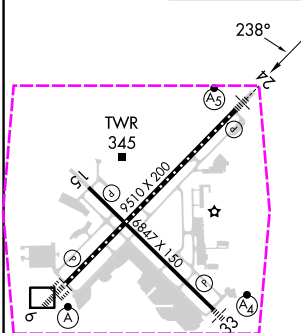
RNAV (GPS) Y RWY 24

BRADLEY INTL (BDL)

RNP APCH-GPS.			MALSR		MISSED APPROACH:	
For uncompensated Baro-VNAV systems, LNAV/VNAV NA below -18°C or above 54°C.					Climb to 3000 direct PENNA and hold.	
D-ATIS 118.15	BRADLEY APP CON 123.95 290.55 (061°-240°) 125.35 281.5 (241°-060°)	BRADLEY TOWER 120.3 351.8	GND CON 121.9 348.6	CLNC DEL 121.75 322.3	CPDLC	



ELEV 173	D	TDZE 170
-----------------	----------	-----------------



3000 ↑ PENNA		VGSI and RNAV glidepath not coincident (VGSI Angle 3.00/TCH 71).		KIBBE 4 NM Holding Pattern	
FARIL 1.3 NM to RW24		MOTEL 2100		059° → 7000 ← 239° 3000	
RW24 640		2100		GP 3.00° TCH 55	
1.3		4.6 NM		7 NM	
CATEGORY		A	B	C	D
LPV DA		370/18 200 (200-½)			
LNAV/VNAV DA		560/45 390 (400-¾)			
LNAV MDA		560/24 390 (400-½)		560/35 390 (400-¾)	
CIRCLING		700-1 527 (600-1)		1120-2¾ 947 (1000-2¾) 1220-3 1047 (1100-3)	

HIRL Rwy 6-24 and 15-33
REIL Rwy 6 and 15
TDZ/CL Rwy 6 and 24

WINDSOR LOCKS, CONNECTICUT
Amdt 4B 12AUG21

41°56'N-72°41'W

RNAV (GPS) Y RWY 24

BRADLEY INTL (BDL)

NE-1, 10 JUL 2025 to 07 AUG 2025

NE-1, 10 JUL 2025 to 07 AUG 2025

WINDSOR LOCKS, CONNECTICUT

AL-460 (FAA)

25219

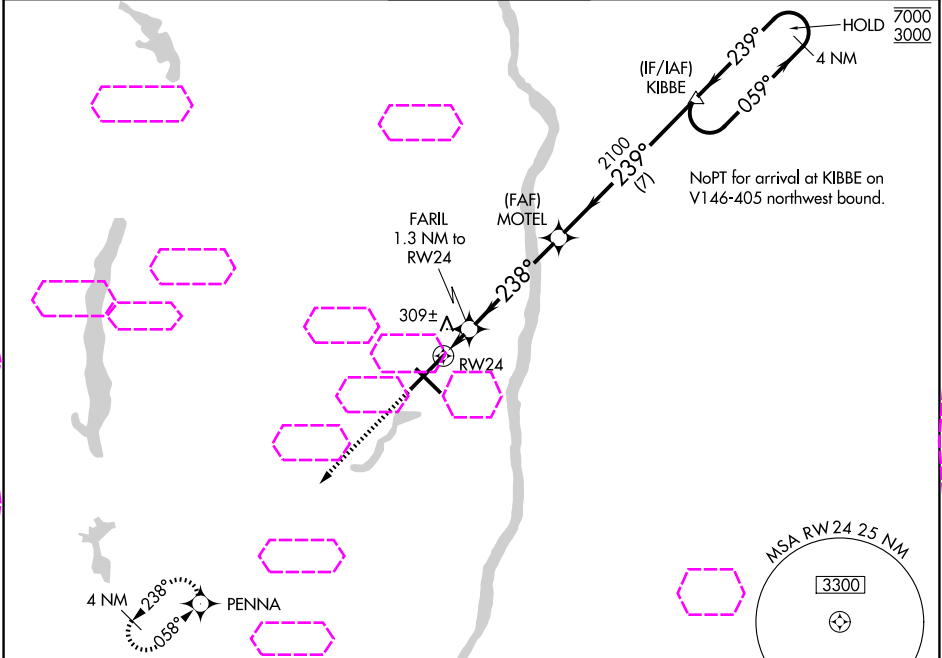
WAAS CH 97310 W24A	APP CRS 238°	Rwy Ldg TDZE 170 Apt Elev 173	9509
--	------------------------	---	-------------

RNAV (GPS) Y RWY 24

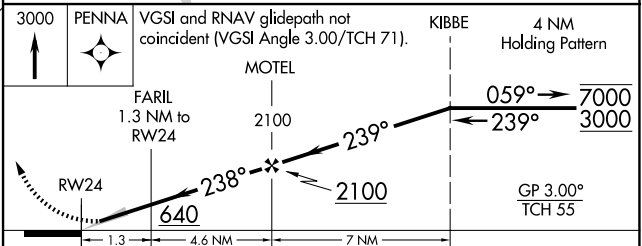
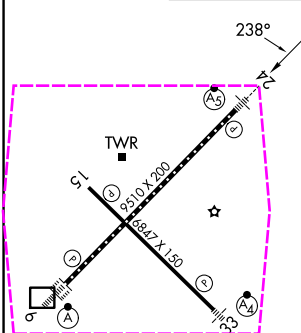
BRADLEY INTL (BDL)

RNP APCH-GPS. For uncompensated Baro-VNAV systems, LNAV/VNAV NA below -18°C or above 54°C.		MALSR 	MISSED APPROACH: Climb to 3000 direct PENNA and hold.	
---	--	-----------	--	--

D-ATIS 118.15	YANKEE APP CON 123.95 290.55 (061°-240°) 125.35 281.5 (241°-060°)	BRADLEY TOWER 120.3 351.8	GND CON 121.9 348.6	CLNC DEL 121.75 322.3	CPDLC
-------------------------	--	-------------------------------------	-------------------------------	---------------------------------	-------



ELEV 173	D	TDZE 170
-----------------	----------	-----------------



CATEGORY	A	B	C	D
LPV DA	370/18		200 (200-½)	
LNAV/VNAV DA	560/45		390 (400-¾)	
LNAV MDA	560/24		560/35	390 (400-¾)
CIRCLING	700-1 527 (600-1)		1120-2¾ 947 (1000-2¾)	1220-3 1047 (1100-3)

WINDSOR LOCKS, CONNECTICUT
Amdt 4B 12AUG21

41°56'N-72°41'W

RNAV (GPS) Y RWY 24

NE-1, 07 AUG 2025 to 04 SEP 2025

NE-1, 07 AUG 2025 to 04 SEP 2025