

WINDSOR LOCKS, CONNECTICUT


AL-460 (FAA)

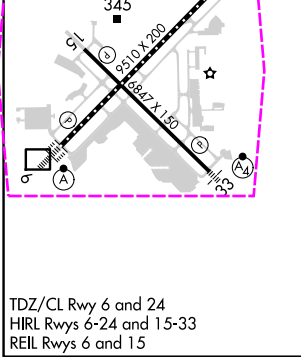
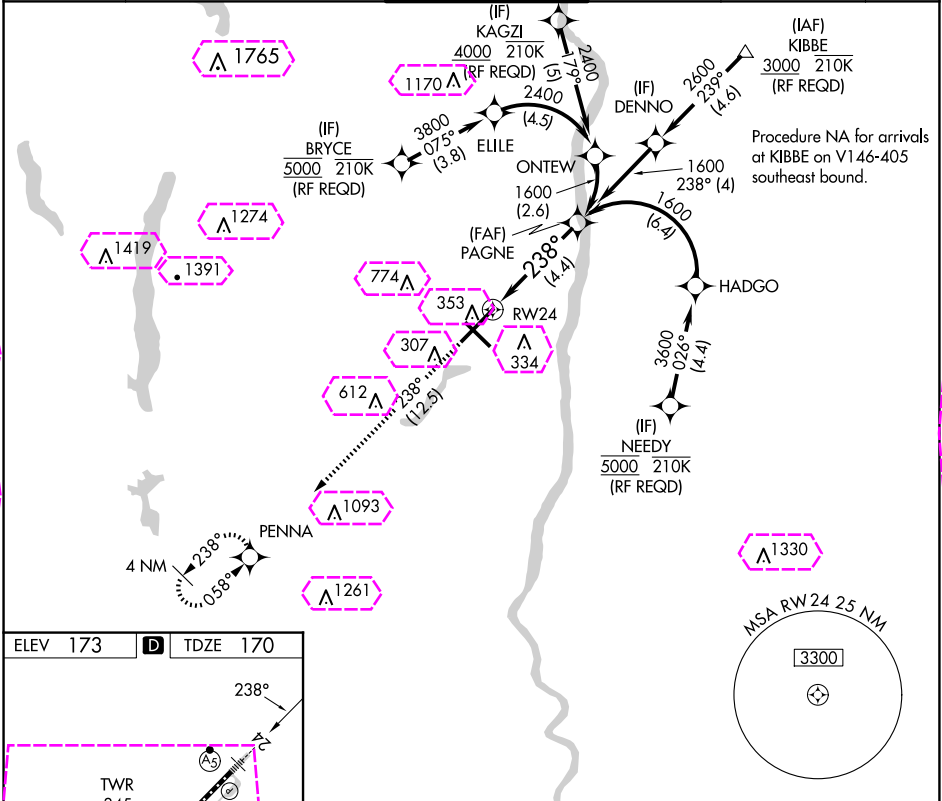
24249



APP CRS	Rwy Idg	9509
238°	TDZE	170
	Apt Elev	173

RNAV (RNP) Z RWY 24

BRADLEY INTL (BDL)

T		For uncompensated Baro-VNAV systems, procedure NA below -18°C (0°F) or above 54°C (130°F). GPS required. For inop ALS, increase all Cats visibility to 1½ SM.		MALSR 		MISSED APPROACH: Climb to 3000 on track 238° to PENNA and hold.	
D-ATIS 118.15	BRADLEY APP CON 123.95 290.55 (061°-240°) 125.35 281.5 (241°-060°)		BRADLEY TOWER 120.3 351.8		GND CON 121.9 348.6	CLNC DEL 121.75 322.3	CPDLC



3000 ↑ tr 238°	PENNA 	VGSI and RNAV glidepath not coincident (VGSI Angle 3.00/TCH 71).		PAGNE 1600
RW24 		238°	1600 GP 3.00° TCH 55	
See planview for multiple IF locations.				
4.4 NM				
CATEGORY	A	B	C	D
RNP 0.30 DA	622/60		452 (500-1¼)	
AUTHORIZATION REQUIRED				

NE-1, 10 JUL 2025 to 07 AUG 2025

NE-1, 10 JUL 2025 to 07 AUG 2025

WINDSOR LOCKS, CONNECTICUT


AL-460 (FAA)

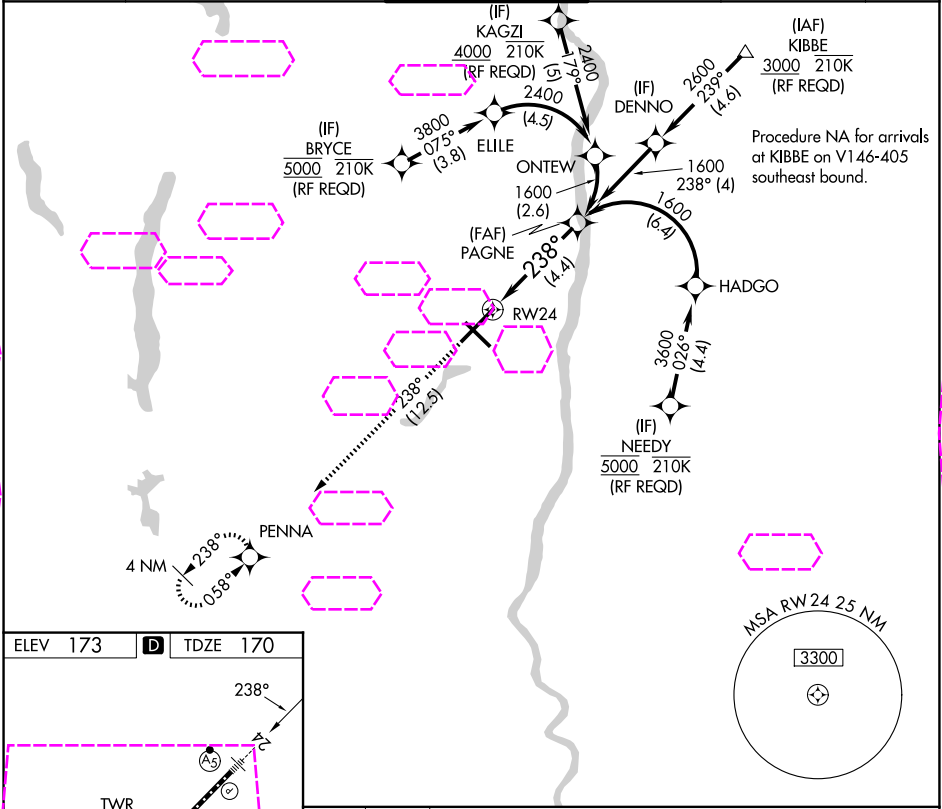
25219

APP CRS	Rwy Ldg	9509
238°	TDZE	170
	Apt Elev	173

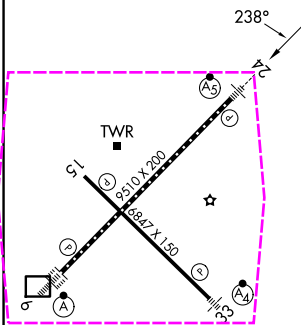
RNAV (RNP) Z RWY 24

BRADLEY INTL (BDL)

T		For uncompensated Baro-VNAV systems, procedure NA below -18°C (0°F) or above 54°C (130°F). GPS required. For inop ALS, increase all Cts visibility to 1½ SM.		MALSR 		MISSED APPROACH: Climb to 3000 on track 238° to PENNA and hold.	
D-ATIS 118.15	YANKEE APP CON 123.95 290.55 (061°-240°) 125.35 281.5 (241°-060°)	BRADLEY TOWER 120.3 351.8	GND CON 121.9 348.6	CLNC DEL 121.75 322.3	CPDLC		



ELEV 173	TDZE 170
----------	----------



3000	PENNA	VGSI and RNAV glidepath not coincident (VGSI Angle 3.00/TCH 71).		PAGNE
tr 238°				1600
RW24		238°		1600
		See planview for multiple IF locations.		GP 3.00° TCH 55
4.4 NM				
CATEGORY	A	B	C	D
RNP 0.30 DA	622/60 452 (500-1¼)			

TDZ/CL Rwy 6 and 24
HIRL Rwys 6-24 and 15-33
REIL Rwys 6 and 15

WINDSOR LOCKS, CONNECTICUT
Amdt 1 29MAR18

41°56'N-72°41'W

BRADLEY INTL (BDL) RNAV (RNP) Z RWY 24

AUTHORIZATION REQUIRED

NE-1, 07 AUG 2025 to 04 SEP 2025

NE-1, 07 AUG 2025 to 04 SEP 2025