

WINDSOR LOCKS, CONNECTICUT

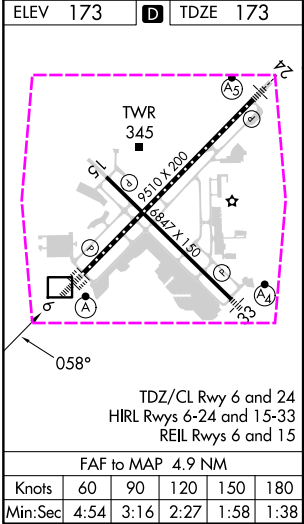
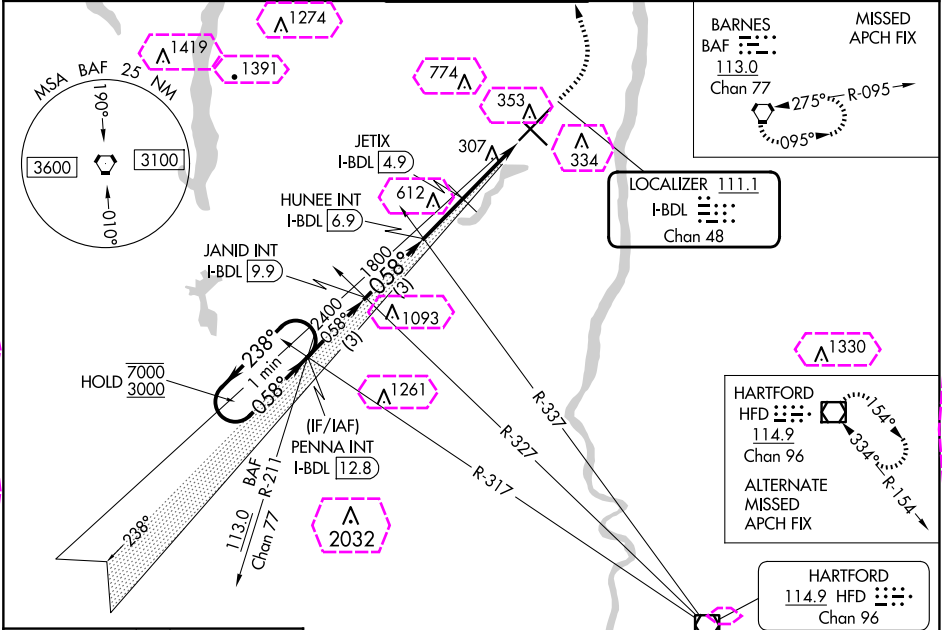
AL-460 (FAA)

24249

LOC/DME I-BDL <b>111.1</b> Chan <b>48</b>	APP CRS <b>058°</b>	Rwy Idg TDZE <b>173</b> Apt Elev <b>173</b>
---	------------------------	---

ILS or LOC RWY 6  
BRADLEY INTL (BDL)

RADAR required for procedure entry.		ALSF-2	MISSED APPROACH: Climb to 4000 then left turn direct BAF VORTAC and hold.		
D-ATIS <b>118.15</b>	BRADLEY APP CON <b>123.95 290.55</b> (061°-240°) <b>125.35 281.5</b> (241°-060°)	BRADLEY TOWER <b>120.3 351.8</b>	GND CON <b>121.9 348.6</b>	CLNC DEL <b>121.75 322.3</b>	CPDLC



ELEV 173 TDZE 173		VGSI and ILS glidepath not coincident (VGSI Angle 3.00/TCH 71).		4000	BAF
One Minute Holding Pattern		PENNA INT I-BDL 12.8	JANID INT I-BDL 9.9	HUNEE INT I-BDL 6.9	JETIX I-BDL 4.9
7000 3000		238° 058°	058° 2400	1800	1160
GS 3.00° TCH 54		3 NM	3 NM	2 NM	2 NM
CATEGORY	A	B	C	D	
S-ILS 6	373/18 200 (200-½)				
S-LOC 6	1160/40 987 (1000-¾)	1160/55 987 (1000-1)	1160-2½	987 (1000-2½)	
JETIX FIX MINIMUMS (DME REQUIRED)					
S-LOC 6	560/24	387 (400-½)	560/35	387 (400-¾)	

WINDSOR LOCKS, CONNECTICUT  
Amdt 38B 24MAR22

41°56'N-72°41'W

BRADLEY INTL (BDL)  
ILS or LOC RWY 6

NE-1, 10 JUL 2025 to 07 AUG 2025

NE-1, 10 JUL 2025 to 07 AUG 2025

WINDSOR LOCKS, CONNECTICUT

AL-460 (FAA)

25219

LOC/DME I-BDL <b>111.1</b> Chan <b>48</b>	APP CRS <b>058°</b>	Rwy Ldg TDZE <b>173</b> Apt Elev <b>173</b>
---	------------------------	---

# ILS or LOC RWY 6

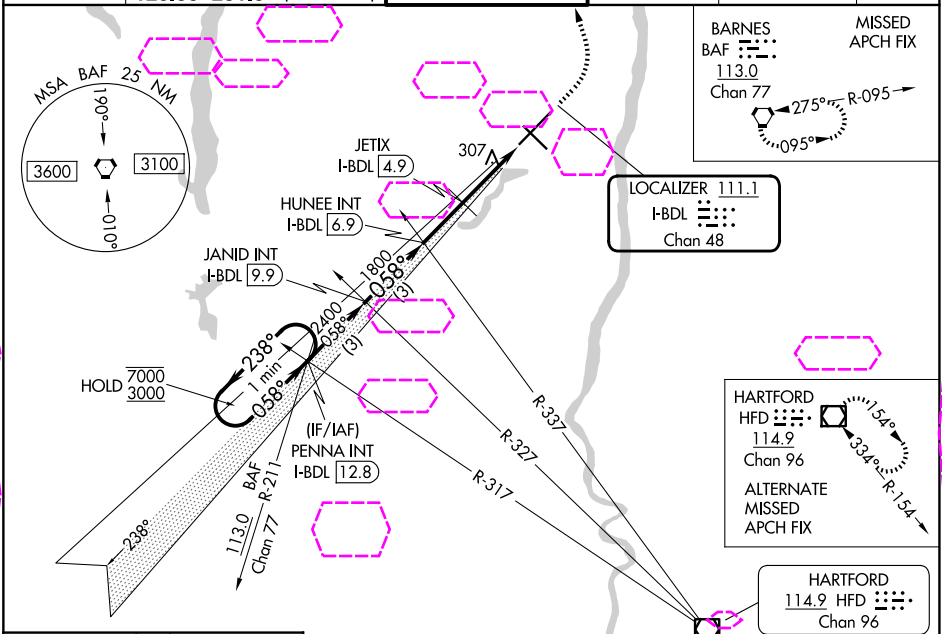
BRADLEY INTL (BDL)

RADAR required for procedure entry.

ALSF-2

MISSED APPROACH: Climb to 4000 then left turn direct BAF VORTAC and hold.

D-ATIS <b>118.15</b>	YANKEE APP CON <b>123.95 290.55</b> (061°-240°) <b>125.35 281.5</b> (241°-060°)	BRADLEY TOWER <b>120.3 351.8</b>	GND CON <b>121.9 348.6</b>	CLNC DEL <b>121.75 322.3</b>	CPDLC
-------------------------	---	-------------------------------------	-------------------------------	---------------------------------	-------






ELEV 173	D	TDZE 173
----------	---	----------

TDZ/CL Rwy 6 and 24  
HIRL Rwys 6-24 and 15-33  
REIL Rwys 6 and 15

FAF to MAP 4.9 NM

Knots	60	90	120	150	180
Min:Sec	4:54	3:16	2:27	1:58	1:38

VGSI and ILS glidepath not coincident (VGSI Angle 3.00/TCH 71).				4000	BAF
One Minute Holding Pattern					
PENNA INT I-BDL 12.8					
JANID INT I-BDL 9.9					
HUNEE INT I-BDL 6.9					
JETIX I-BDL 4.9					
I-BDL 2.9					
I-BDL 1.9					
3 NM					
3 NM					
2 NM					
2 NM					
1 NM					
CATEGORY	A	B	C	D	
S-ILS 6	373/18 200 (200-½)				
S-LOC 6	1160/40 987 (1000-¾)	1160/55 987 (1000-1)	1160-2½	987 (1000-2½)	
JETIX FIX MINIMUMS (DME REQUIRED)					
S-LOC 6	560/24	387 (400-½)	560/35	387 (400-⅝)	

NE-1, 07 AUG 2025 to 04 SEP 2025

NE-1, 07 AUG 2025 to 04 SEP 2025