

WINDSOR LOCKS, CONNECTICUT

AL-460 (FAA)

24249

LOC/DME I-MYQ	APP CRS	Rwy Idg	9509
111.1	238°	TDZE	170
Chan 48		Apt Elev	173

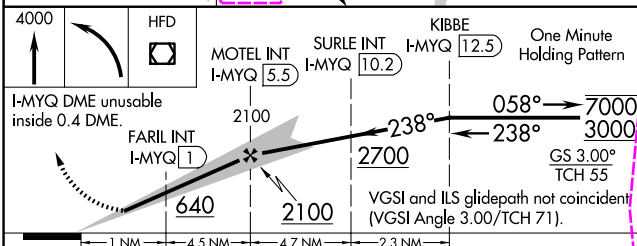
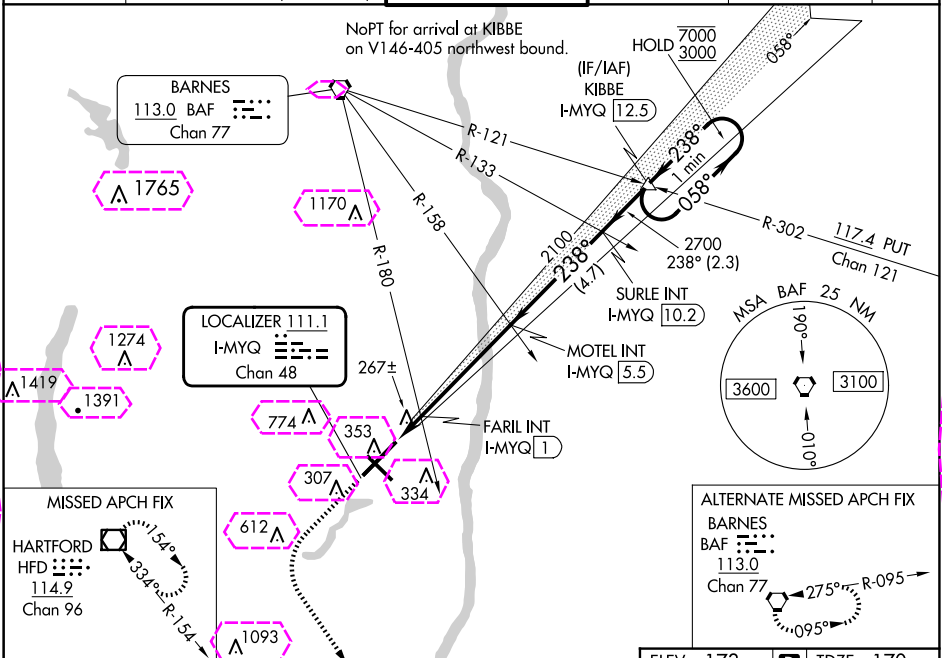
ILS or LOC RWY 24

BRADLEY INTL (BDL)

MALSR

MISSED APPROACH: Climb to 4000 then left turn direct HFD VOR/DME and hold.

D-ATIS	BRADLEY APP CON	BRADLEY TOWER	GND CON	CLNC DEL	CPDLC
118.15	123.95 290.55 (061°-240°) 125.35 281.5 (241°-060°)	120.3 351.8	121.9 348.6	121.75 322.3	



ELEV 173	TDZE 170
238°	
TDZ/CL Rwy 6 and 24 HIRL Rwy 6-24 and 15-33 REIL Rwy 6 and 15	
FAF to MAP 5.9 NM	
Knots	60 90 120 150 180
Min:Sec	5:54 3:56 2:57 2:22 1:58

CATEGORY	A	B	C	D
S-ILS 24	370/18	200 (200-1/2)		
S-LOC 24	640/24 470 (500-1/2)	640/50 470 (500-1)		
CIRCLING	700-1 527 (600-1)	1120-23/4 947 (1000-23/4)	1220-3 1047 (1100-3)	
FARIL FIX MINIMUMS (DUAL VOR RECEIVERS OR DME REQUIRED)				
S-LOC 24	520/24 350 (400-1/2)	520/30 350 (400-3/4)		
CIRCLING	700-1 527 (600-1)	1120-23/4 947 (1000-23/4)	1220-3 1047 (1100-3)	

NE-1, 10 JUL 2025 to 07 AUG 2025

NE-1, 10 JUL 2025 to 07 AUG 2025

WINDSOR LOCKS, CONNECTICUT

AL-460 (FAA)

25219

LOC/DME I-MYQ	APP CRS	Rwy Ldg	9509
111.1	238°	TDZE	170
Chan 48		Apt Elev	173

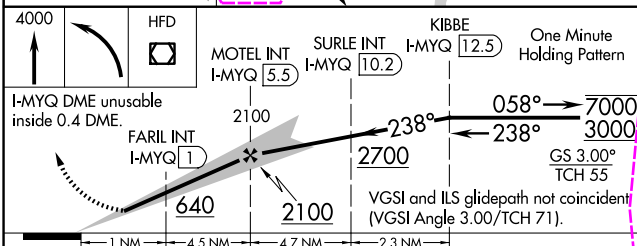
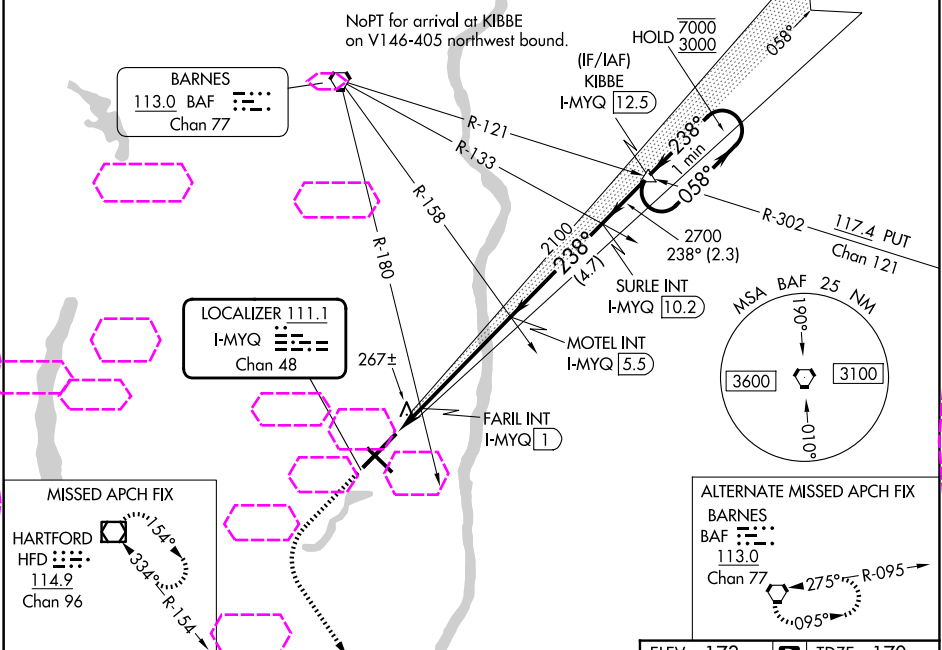
ILS or LOC RWY 24

BRADLEY INTL (BDL)

MALSR

MISSED APPROACH: Climb to 4000 then left turn direct HFD VOR/DME and hold.

D-ATIS	YANKEE APP CON	BRADLEY TOWER	GND CON	CLNC DEL	CPDLC
118.15	123.95 290.55 (061°-240°) 125.35 281.5 (241°-060°)	120.3 351.8	121.9 348.6	121.75 322.3	



ELEV 173 TDZE 170

TDZ/CL Rwy 6 and 24
HIRL Rwy 6-24 and 15-33
REIL Rwy 6 and 15

FAF to MAP 5.9 NM

Knots	60	90	120	150	180
Min:Sec	5:54	3:56	2:57	2:22	1:58

CATEGORY	A	B	C	D
S-ILS 24	370/18	200 (200-1/2)		
S-LOC 24	640/24	470 (500-1/2)	640/50	470 (500-1)
CIRCLING	700-1	527 (600-1)	1120-2 3/4 947 (1000-2 3/4)	1220-3 1047 (1100-3)
FARIL FIX MINIMUMS (DUAL VOR RECEIVERS OR DME REQUIRED)				
S-LOC 24	520/24	350 (400-1/2)	520/30	350 (400-3/4)
CIRCLING	700-1	527 (600-1)	1120-2 3/4 947 (1000-2 3/4)	1220-3 1047 (1100-3)

NE-1, 07 AUG 2025 to 04 SEP 2025

NE-1, 07 AUG 2025 to 04 SEP 2025