

WINDSOR LOCKS, CONNECTICUT

AL-460 (FAA)

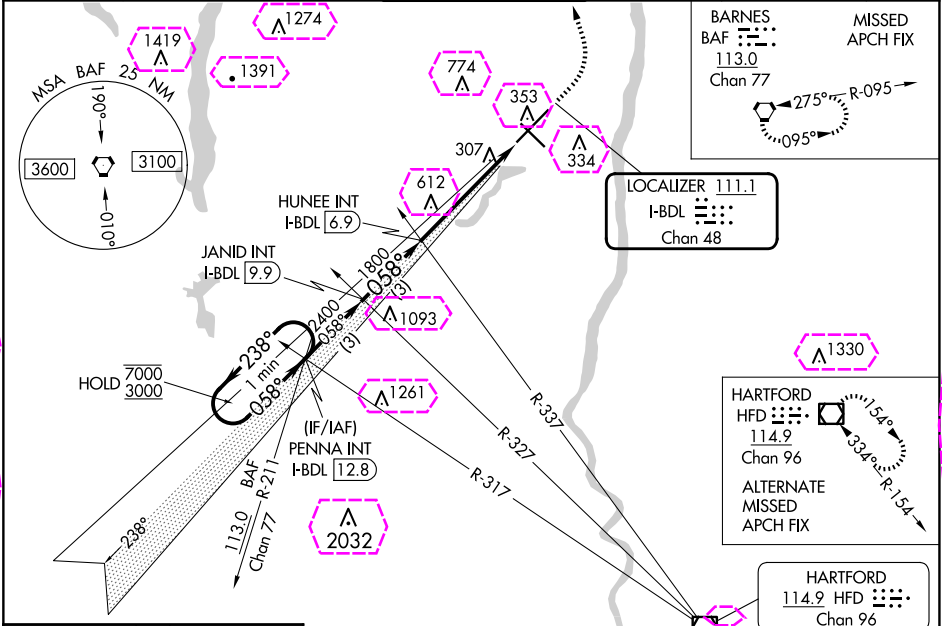
24249

LOC/DME I-BDL 111.1 Chan 48	APP CRS 058°	Rwy Idg TDZE 173 Apt Elev 173
9509		

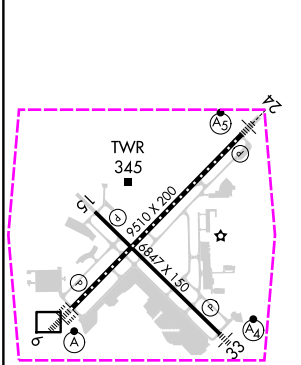
ILS RWY 6 (CAT II & III)
BRADLEY INTL (BDL)

RADAR required for procedure entry.	ALSF-2	MISSED APPROACH: Climb to 4000 then left turn direct BAF VORTAC and hold.
CAT II: RVR 1000 authorized with specific OPSPEC, MSPEC or LOA approval and use of autoland or HUD to touchdown.		

D-ATIS 118.15	BRADLEY APP CON 123.95 290.55 (061°-240°) 125.35 281.5 (241°-060°)	BRADLEY TOWER 120.3 351.8	GND CON 121.9 348.6	CLNC DEL 121.75 322.3	CPDLC
-------------------------	----------------------------------------------------------------------------------------	-------------------------------------	-------------------------------	---------------------------------	-------



ELEV 173	D	TDZE 173
----------	---	----------



WINDSOR LOCKS, CONNECTICUT

AL-460 (FAA)

25219

LOC/DME I-BDL	APP CRS	Rwy Ldg	9509
111.1	058°	TDZE	173
Chan 48		Apt Elev	173

ILS RWY 6 (CAT II & III)
BRADLEY INTL (BDL)

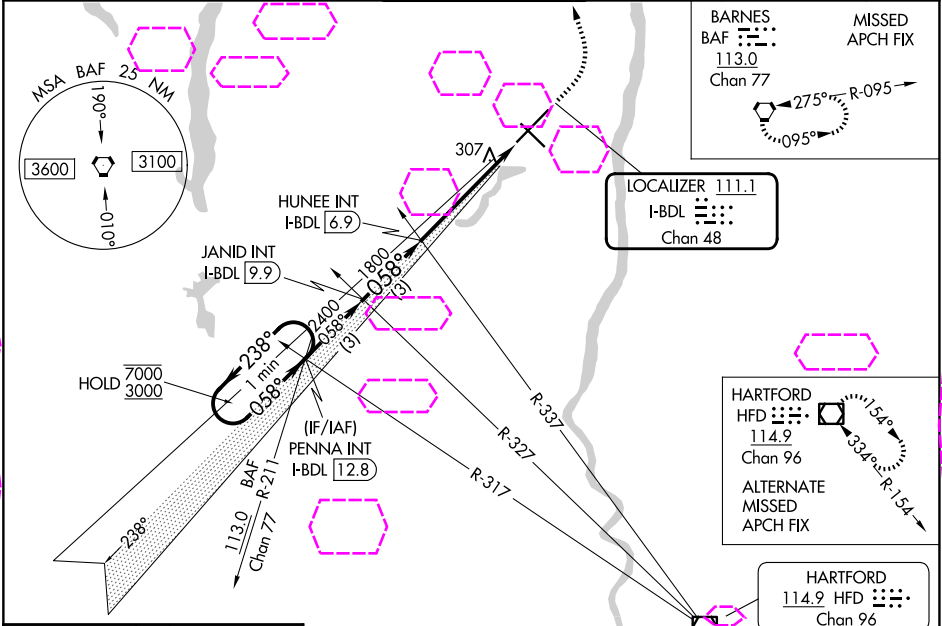
RADAR required for procedure entry.

CAT II: RVR 1000 authorized with specific OPSPEC, MSPEC or LOA approval and use of autoland or HUD to touchdown.

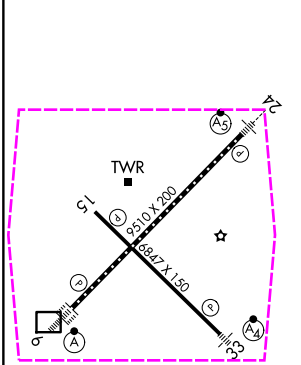
ALSF-2

MISSED APPROACH: Climb to 4000 then left turn direct BAF VORTAC and hold.

D-ATIS	YANKEE APP CON	BRADLEY TOWER	GND CON	CLNC DEL	CPDLC
118.15	123.95 290.55 (061°-240°) 125.35 281.5 (241°-060°)	120.3 351.8	121.9 348.6	121.75 322.3	



ELEV 173	D	TDZE 173
----------	---	----------



VGSi and ILS glidepath not coincident (VGSi Angle 3.00/TCH 71).				4000	BAF
One Minute Holding Pattern					
PENNA INT I-BDL [12.8]					
JANID INT I-BDL [9.9]					
HUNEE INT I-BDL [6.9]					
7000 ← 238°					
3000 → 058°					
GS 3.00° TCH 54					
3 NM				3 NM	4.9 NM
CATEGORY A				CATEGORY B	CATEGORY C
S-ILS 6				CAT II RA 101/12 100 DA 273	
S-ILS 6				CAT III RVR 06	

CATEGORY II & III ILS-SPECIAL AIRCREW & AIRCRAFT CERTIFICATION REQUIRED

NE-1, 07 AUG 2025 to 04 SEP 2025

NE-1, 07 AUG 2025 to 04 SEP 2025