

WINDSOR LOCKS, CONNECTICUT

AL-460 (FAA)

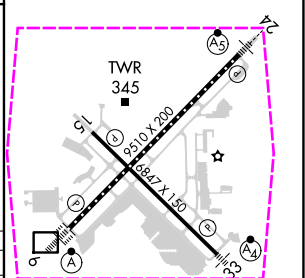
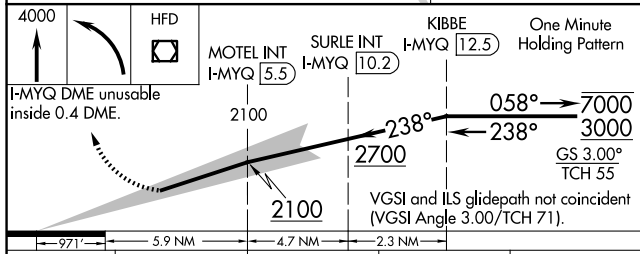
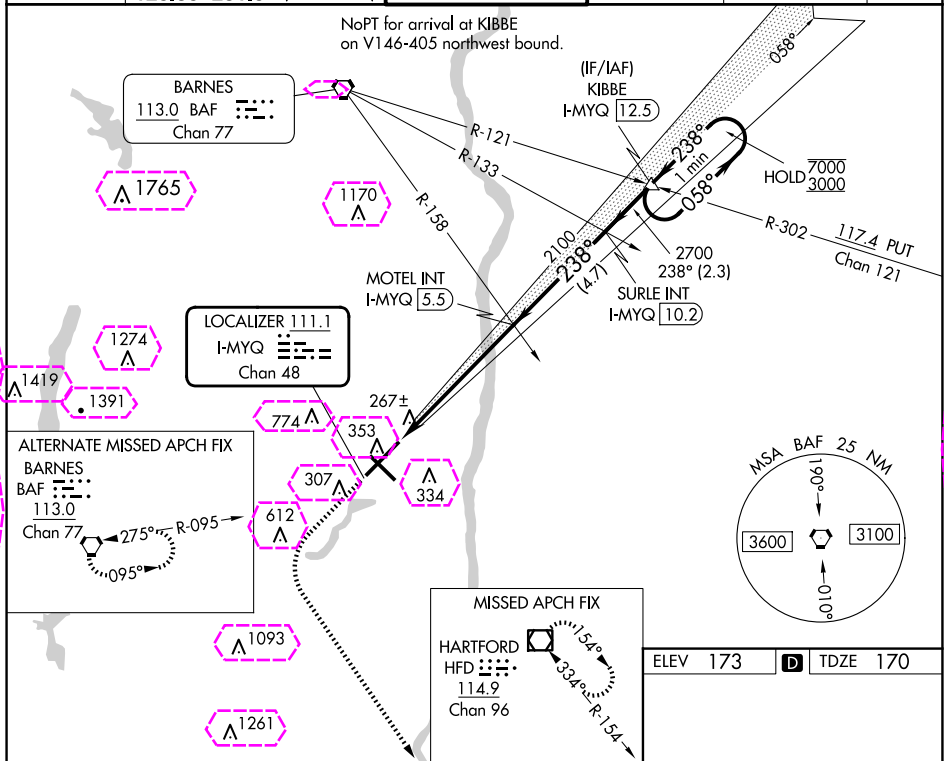
24249

LOC/DME I-MYQ <b>111.1</b> Chan <b>48</b>	APP CRS <b>238°</b>	Rwy Idg TDZE <b>170</b> Apt Elev <b>173</b>	<b>9509</b>
---	------------------------	---	-------------

# ILS RWY 24 (SA CAT I & II)

BRADLEY INTL (BDL)

<div><div></div><div>SA CAT I: Requires specific OPSPEC, MSPEC or LOA approval. SA CAT II: Requires specific OPSPEC, MSPEC or LOA approval.</div></div>			<div><div>MALSR</div><div><div><div></div><div></div></div><div></div></div></div>		<div>MISSED APPROACH: Climb to 4000 then left turn direct HFD VOR/DME and hold.</div>	
<div>D-ATIS 118.15</div>	<div><div>BRADLEY APP CON</div><div>123.95 290.55 (061°-240°) 125.35 281.5 (241°-060°)</div></div>	<div>BRADLEY TOWER 120.3 351.8</div>	<div>GND CON 121.9 348.6</div>	<div>CLNC DEL 121.75 322.3</div>	<div>CPDLC</div>	



CATEGORY	A	B	C	D
S-ILS 24	SA CAT I	RA 163/14	150	DA 320
S-ILS 24	SA CAT II	RA 113/12	100	DA 270

## SA CATEGORY I & II ILS-SPECIAL AIRCREW & AIRCRAFT CERTIFICATION REQUIRED

HIRL Rwy 6-24 and 15-33  
REIL Rwy 6 and 15  
TDZ/CL Rwy 6 and 24

WINDSOR LOCKS, CONNECTICUT

BRADLEY INTL (BDL)

Amdt 13B 24MAR22

41°56'N-72°41'W

# ILS RWY 24 (SA CAT I & II)

NE-1, 10 JUL 2025 to 07 AUG 2025

NE-1, 10 JUL 2025 to 07 AUG 2025

WINDSOR LOCKS, CONNECTICUT


AL-460 (FAA)

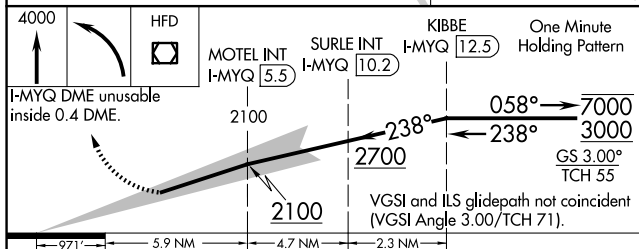
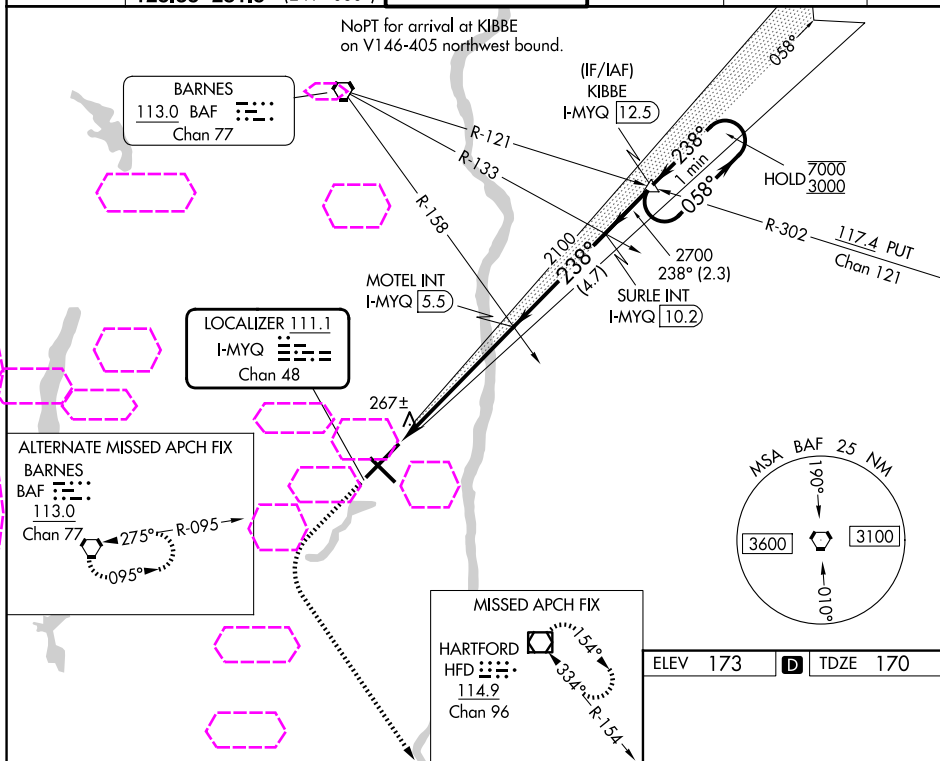
25219

LOC/DME I-MYQ <b>111.1</b> Chan <b>48</b>	APP CRS <b>238°</b>	Rwy Ldg TDZE <b>170</b> Apt Elev <b>173</b>
---	------------------------	---

# ILS RWY 24 (SA CAT I & II)

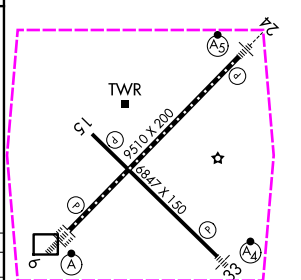
## BRADLEY INTL (BDL)

SA CAT I: Requires specific OPSPEC, MSPEC or LOA approval. SA CAT II: Requires specific OPSPEC, MSPEC or LOA approval.			MALSR 	MISSED APPROACH: Climb to 4000 then left turn direct HFD VOR/DME and hold.	
D-ATIS 118.15	YANKEE APP CON 123.95 290.55 (061°-240°) 125.35 281.5 (241°-060°)	BRADLEY TOWER 120.3 351.8	GND CON 121.9 348.6	CLNC DEL 121.75 322.3	CPDLC



CATEGORY	A	B	C	D
S-ILS 24	SA CAT I	RA 163/14	150	DA 320
S-ILS 24	SA CAT II	RA 113/12	100	DA 270

## SA CATEGORY I & II ILS-SPECIAL AIRCREW & AIRCRAFT CERTIFICATION REQUIRED



HIRL Rwy 6-24 and 15-33  
REIL Rwy 6 and 15  
TDZ/CL Rwy 6 and 24

WINDSOR LOCKS, CONNECTICUT

BRADLEY INTL (BDL)

Amdt 13B 24MAR22

41°56'N-72°41'W

## ILS RWY 24 (SA CAT I & II)

NE-1, 07 AUG 2025 to 04 SEP 2025

NE-1, 07 AUG 2025 to 04 SEP 2025