

## DEER PARK THREE ARRIVAL

WINDSOR LOCKS, CONNECTICUT

BRADLEY APP CON

123.95 290.55 (061-240)

125,35 281,5 (241-060)

BDL D-ATIS

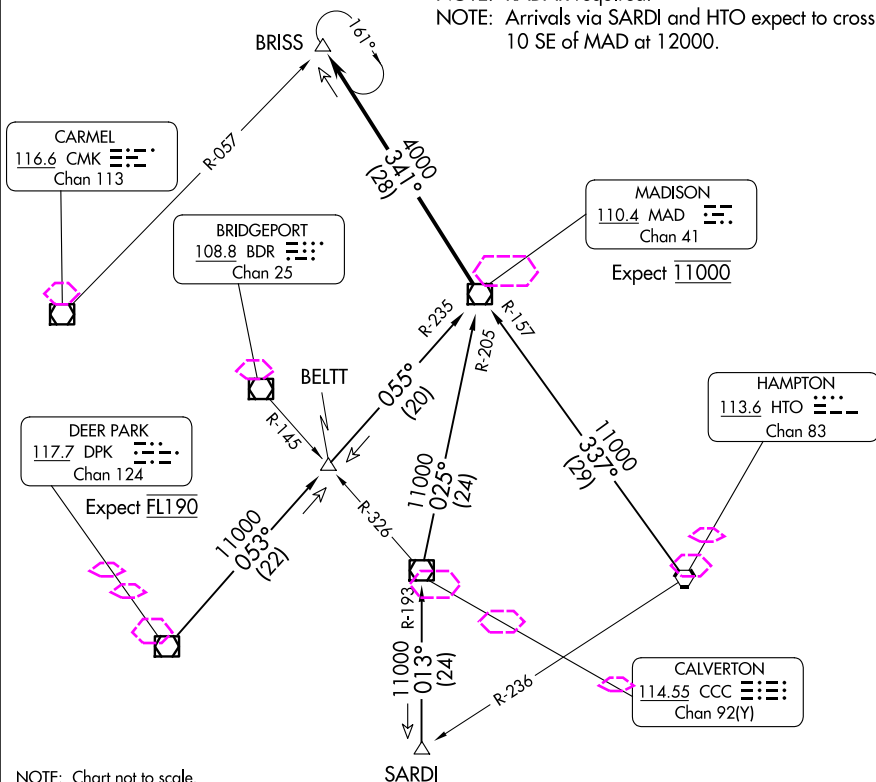
118.15

WESTFIELD-B.  
RGNL WESTOVER ARB/  
METROPOLITAN BRADLEY  
INTL

NOTE: Applicable to arrivals 11 000 and above.

NOTE: RADAR required.

NOTE: Arrivals via SARDI and HTO expect to cross 10 SE of MAD at 12000.



NOTE: Chart not to scale.

## ARRIVAL ROUTE DESCRIPTION

DEER PARK TRANSITION (DPK.DPK3): From over DPK VOR/DME on DPK R-053 to BELT INT, then on MAD R-235 to MAD VOR/DME. Thence . . .

HAMPTON TRANSITION (HTO.DPK3): From over HTO VORTAC on HTO R-337 and MAD R-157 to MAD VOR/DME. Thence . . . .

SARDI TRANSITION (SARDI.DPK3): From over SARDI INT on CCC R-193 to CCC VOR/DME, then on CCC R-025 and MAD R-205 to MAD VOR/DME. Thence . . . .

From over MAD VOR/DME on MAD R-341 to BRISS INT/MAD 28 DME.

Expect radar vectors to final approach course prior to BRISS INT.

## DEER PARK THREE ARRIVAL

WINDSOR LOCKS, CONNECTICUT

(MAD.DPK3) 25OCT07

NE-1, 10 JUL 2025 to 07 AUG 2025

NE-1, 10 JUL 2025 to 07 AUG 2025

(MAD.DPK3) 25219

AL-460 (FAA)

## DEER PARK THREE ARRIVAL

WINDSOR LOCKS, CONNECTICUT

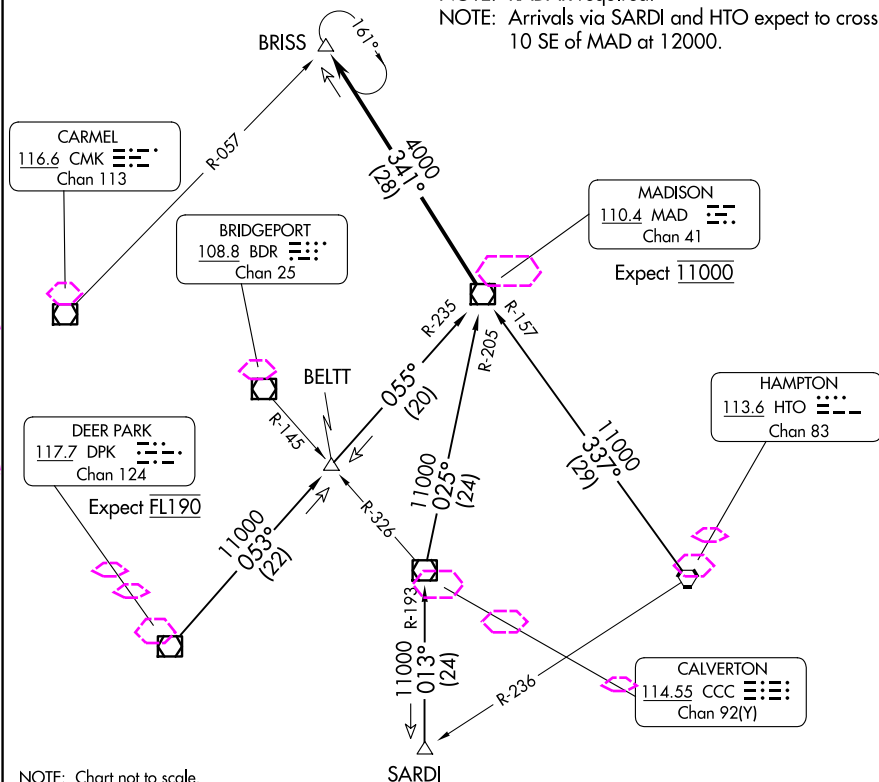
## YANKEE APP CON

123.95 290.55 (061-240)  
 125.35 281.5 (241-060)  
 BDL D-ATIS  
 118.15

WESTFIELD-BARNES  
RGNLWESTOVER ARB/  
METROPOLITANBRADLEY  
INTL

NOTE: Applicable to arrivals 11000 and above.

NOTE: RADAR required.

NOTE: Arrivals via SARDI and HTO expect to cross  
10 SE of MAD at 12000.

NOTE: Chart not to scale.

## ARRIVAL ROUTE DESCRIPTION

**DEER PARK TRANSITION (DPK.DPK3):** From over DPK VOR/DME on DPK R-053 to BELTT INT, then on MAD R-235 to MAD VOR/DME. Thence . . .

**HAMPTON TRANSITION (HTO.DPK3):** From over HTO VORTAC on HTO R-337 and MAD R-157 to MAD VOR/DME. Thence . . .

**SARDI TRANSITION (SARDI.DPK3):** From over SARDI INT on CCC R-193 to CCC VOR/DME, then on CCC R-025 and MAD R-205 to MAD VOR/DME. Thence . . .

From over MAD VOR/DME on MAD R-341 to BRISS INT/MAD 28 DME.  
 Expect radar vectors to final approach course prior to BRISS INT.

## DEER PARK THREE ARRIVAL

WINDSOR LOCKS, CONNECTICUT

(MAD.DPK3) 25OCT07

NE-1, 07 AUG 2025 to 04 SEP 2025

NE-1, 07 AUG 2025 to 04 SEP 2025