

WILLIAMSPORT, PENNSYLVANIA

AL-457 (FAA)

23222

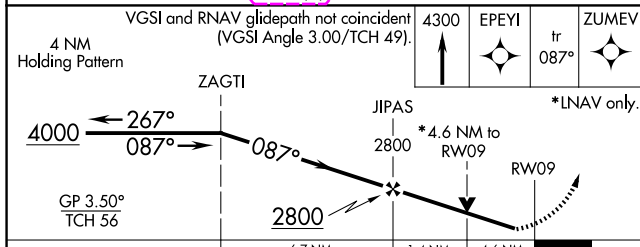
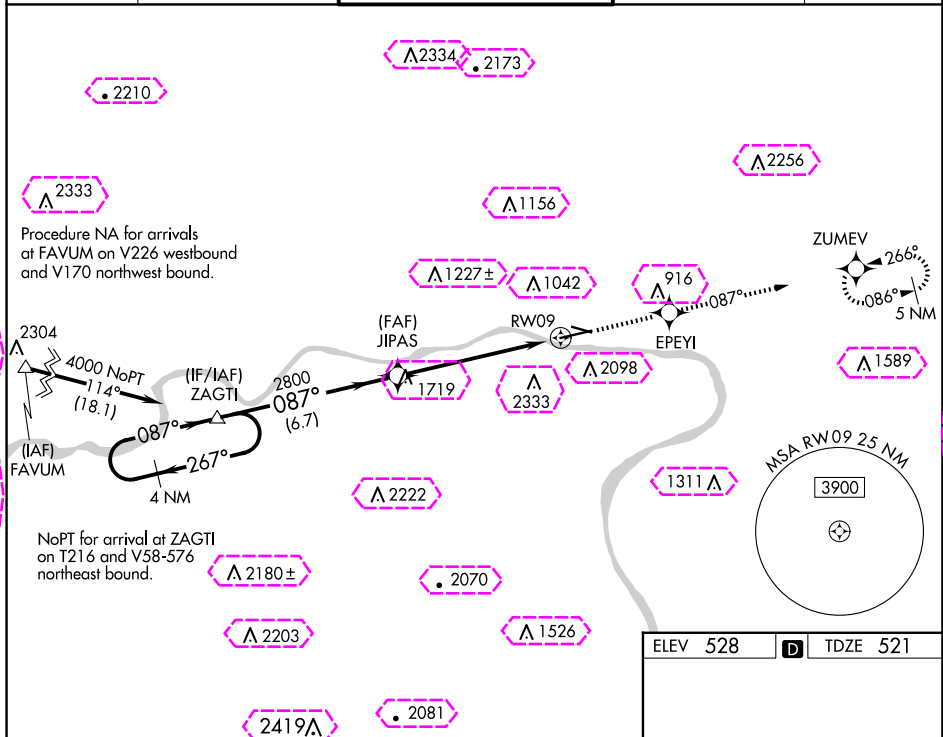
WAAS CH 86924 W09A	APP CRS 087°	Rwy Idg 6073 TDZE 521 Apt Elev 528
--	------------------------	---

RNAV (GPS) RWY 9

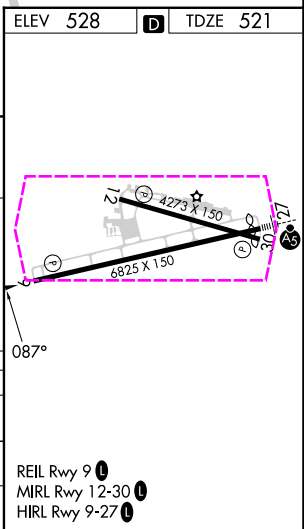
WILLIAMSPORT RGNL (IPT')

 DME/DME RNP-0.3 NA. Circling Rwy 12, 30 NA at night. Circling NA south of Rwy 9 and southwest of Rwy 30. Rwy 9 helicopter visibility reduction below 3/4 SM NA.	MISSED APPROACH: Climb to 4300 direct EPEYI and on track 087° to ZUMEV and hold, continue climb-in-hold to 4300.
--	--

ASOS 125.225	NEW YORK CENTER 124.9	WILLIAMSPORT TOWER ★ 119.1 (CTAF) 257.8	GND CON 121.9	UNICOM 122.95
------------------------	---------------------------------	---	-------------------------	-------------------------



CATEGORY	A	B	C	D
LPV DA	1036-1½	515 (600-1½)		NA
LNAV MDA	2040-1½ 1519 (1600-1½)	2040-1½ 1519 (1600-1½)	2040-3 1519 (1600-3)	NA
CIRCLING	2040-1½ 1512 (1600-1½)	2040-1½ 1512 (1600-1½)	2040-3 1512 (1600-3)	NA



WILLIAMSPORT, PENNSYLVANIA

AL-457 (FAA)

25219

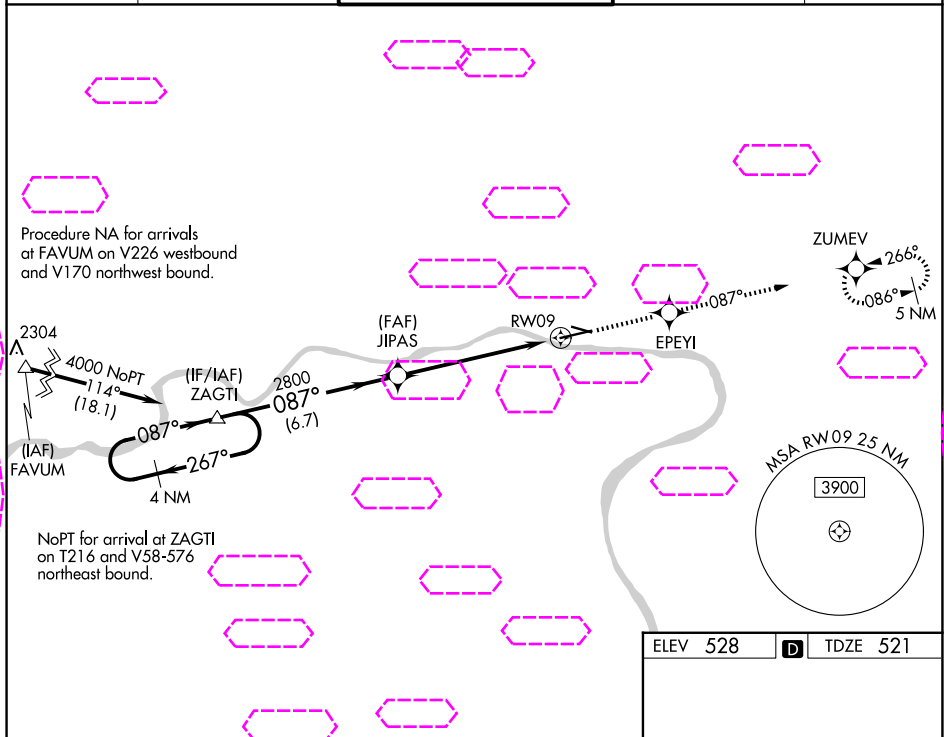
WAAS CH 86924 W09A	APP CRS 087°	Rwy Ldg 6073 TDZE 521 Apt Elev 528
--	------------------------	---

RNAV (GPS) RWY 9

WILLIAMSPORT RGNL (IPT')

 	DME/DME RNP-0.3 NA. Circling Rwy 12, 30 NA at night. Circling NA south of Rwy 9 and southwest of Rwy 30. Rwy 9 helicopter visibility reduction below ¾ SM NA.	MISSED APPROACH: Climb to 4300 direct EPEYI and on track 087° to ZUMEV and hold, continue climb-in-hold to 4300.
------	--	--

ASOS 125.225	NEW YORK CENTER 124.9	WILLIAMSPORT TOWER ★ 119.1 (CTAF) 257.8	GND CON 121.9	UNICOM 122.95
------------------------	---------------------------------	---	-------------------------	-------------------------



VGSI and RNAV glidepath not coincident (VGSI Angle 3.00/TCH 49).				
4 NM Holding Pattern	ZAGTI	JIPAS	RW09	ZUMEV
4000	2800	2800	4300	4300
GP 3.50° TCH 56			tr 087°	
267°	087°	087°		
6.7 NM	1.4 NM	4.6 NM		
CATEGORY	A	B	C	D
LPV DA	1036-1½	515 (600-1½)		NA
LNAV MDA	2040-1¼ 1519 (1600-1¼)	2040-1½ 1519 (1600-1½)	2040-3 1519 (1600-3)	NA
CIRCLING	2040-1¼ 1512 (1600-1¼)	2040-1½ 1512 (1600-1½)	2040-3 1512 (1600-3)	NA

WILLIAMSPORT, PENNSYLVANIA
Amdt 1 22JUN17

41°15'N-76°55'W

WILLIAMSPORT RGNL (IPT')
RNAV (GPS) RWY 9

REIL Rwy 9
MIRL Rwy 12-30
HIRL Rwy 9-27