

WILLIAMSPORT, PENNSYLVANIA

AL-457 (FAA)

23222

|  |                        |   |
|--|------------------------|---|
| WAAS<br>CH <b>82140</b><br><b>W27A</b> | APP CRS<br><b>267°</b> | Rwy Idg <b>6063</b><br>TDZE <b>527</b><br>Apt Elev <b>528</b> |
|--|------------------------|---|

# RNAV (GPS) RWY 27

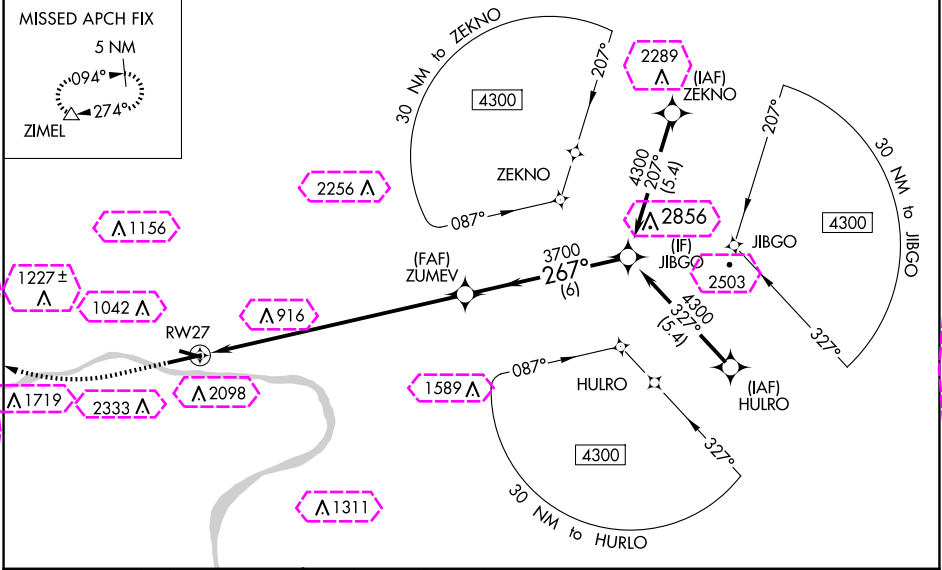
WILLIAMSPORT RGNL (IPT)

**⚠** For uncompensated Baro-VNAV systems, LNAV/VNAV NA below -17°C (2°F) or above 54°C (130°F). Circling NA S of Rwy 9 and SW of Rwy 30. Circling Rwy 12, 30 NA at night. Rwy 27 helicopter visibility reduction below ¾ SM NA. DME/DME RNP-0.3 NA. For inop ALS, increase LPV all Cats visibility to ¾ SM. Inop table does not apply to LPV DA# all Cats and LNAV Cats C and D.

MALSR

MISSED APPROACH: (Do not exceed 210K until ZIMEL) Climb to 980 then climbing right turn to 4500 direct ZIMEL and hold, continue climb-in-hold to 4500. #Missed approach requires minimum climb of 353 feet per NM to 1300.

|                        |                                 |   |                         |                         |
|------------------------|---------------------------------|---|-------------------------|-------------------------|
| ASOS<br><b>125.225</b> | NEW YORK CENTER<br><b>124.9</b> | WILLIAMSPORT TOWER ★<br><b>119.1 (CTAF) 257.8</b> | GND CON<br><b>121.9</b> | UNICOM<br><b>122.95</b> |
|------------------------|---------------------------------|---|-------------------------|-------------------------|



ELEV 528 **D** TDZE 527

980 4500 ZIMEL

\* LNAV only.

| CATEGORY          | A                         | B                         | C      | D             |
|-------------------|---------------------------|---------------------------|--------|---------------|
| LPV DA#           | 777-¾ 250 (300-¾)         |                           |        |               |
| LPV DA            | 811-¾ 284 (300-¾)         |                           |        |               |
| LNAV/VNAV DA      | 1296-2½ 769 (800-2½)      |                           |        |               |
| LNAV MDA          | 2280-¾<br>1753 (1800-¾)   | 2280-1<br>1753 (1800-1)   | 2280-3 | 1753 (1800-3) |
| <b>C</b> CIRCLING | 2280-1¼<br>1752 (1800-1¼) | 2280-1½<br>1752 (1800-1½) | 2280-3 | 1752 (1800-3) |

REIL Rwy 9 **1**

MIRL Rwy 12-30 **1**

HIRL Rwy 9-27 **1**

WILLIAMSPORT, PENNSYLVANIA

AL-457 (FAA)

25219

|  |                        |   |
|--|------------------------|---|
| WAAS<br>CH <b>82140</b><br><b>W27A</b> | APP CRS<br><b>267°</b> | Rwy Ldg<br>TDZE <b>527</b><br>Apt Elev <b>528</b> |
|--|------------------------|---|

# RNAV (GPS) RWY 27

WILLIAMSPORT RGNL (IPT)

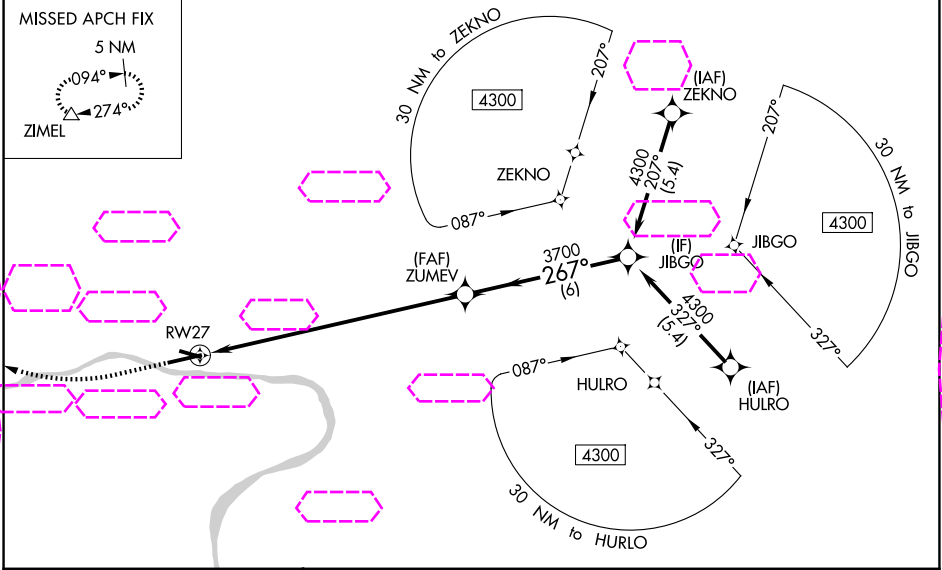
**⚠** For uncompensated Baro-VNAV systems, LNAV/VNAV NA below -17°C (2°F) or above 54°C (130°F). Circling NA S of Rwy 9 and SW of Rwy 30. Circling Rwy 12, 30 NA at night.

**✈** Rwy 27 helicopter visibility reduction below ¾ SM NA. DME/DME RNP-0.3 NA. For inop ALS, increase LPV all Cats visibility to ¾ SM. Inop table does not apply to LPV DA# all Cats and LNAV Cats C and D.

MALSR

MISSED APPROACH: (Do not exceed 210K until ZIMEL) Climb to 980 then climbing right turn to 4500 direct ZIMEL and hold, continue climb-in-hold to 4500. #Missed approach requires minimum climb of 353 feet per NM to 1300.

|                        |                                 |   |                         |                         |
|------------------------|---------------------------------|---|-------------------------|-------------------------|
| ASOS<br><b>125.225</b> | NEW YORK CENTER<br><b>124.9</b> | WILLIAMSPORT TOWER ★<br><b>119.1 (CTAF) 257.8</b> | GND CON<br><b>121.9</b> | UNICOM<br><b>122.95</b> |
|------------------------|---------------------------------|---|-------------------------|-------------------------|



|          |          |          |     |      |       |
|----------|----------|----------|-----|------|-------|
| ELEV 528 | <b>D</b> | TDZE 527 | 980 | 4500 | ZIMEL |
|----------|----------|----------|-----|------|-------|

**267°**

**\* LNAV only.**

|              |                           |                           |        |               |
|--------------|---------------------------|---------------------------|--------|---------------|
| CATEGORY     | A                         | B                         | C      | D             |
| LPV DA#      | 777-¾ 250 (300-¾)         |                           |        |               |
| LPV DA       | 811-¾ 284 (300-¾)         |                           |        |               |
| LNAV/VNAV DA | 1296-2½ 769 (800-2½)      |                           |        |               |
| LNAV MDA     | 2280-¾<br>1753 (1800-¾)   | 2280-1<br>1753 (1800-1)   | 2280-3 | 1753 (1800-3) |
| CIRCLING     | 2280-1¼<br>1752 (1800-1¼) | 2280-1½<br>1752 (1800-1½) | 2280-3 | 1752 (1800-3) |

REIL Rwy 9 **Ⓛ**

MIRL Rwy 12-30 **Ⓛ**

HIRL Rwy 9-27 **Ⓛ**

GP 3.00° TCH 48