

WILLIAMSPORT, PENNSYLVANIA

AL-457 (FAA)

24081

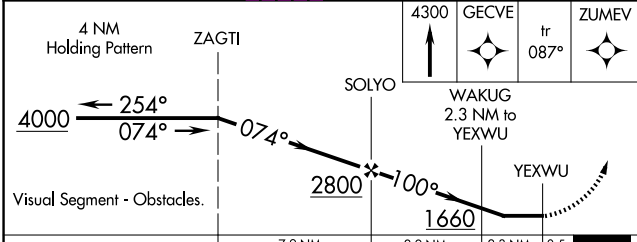
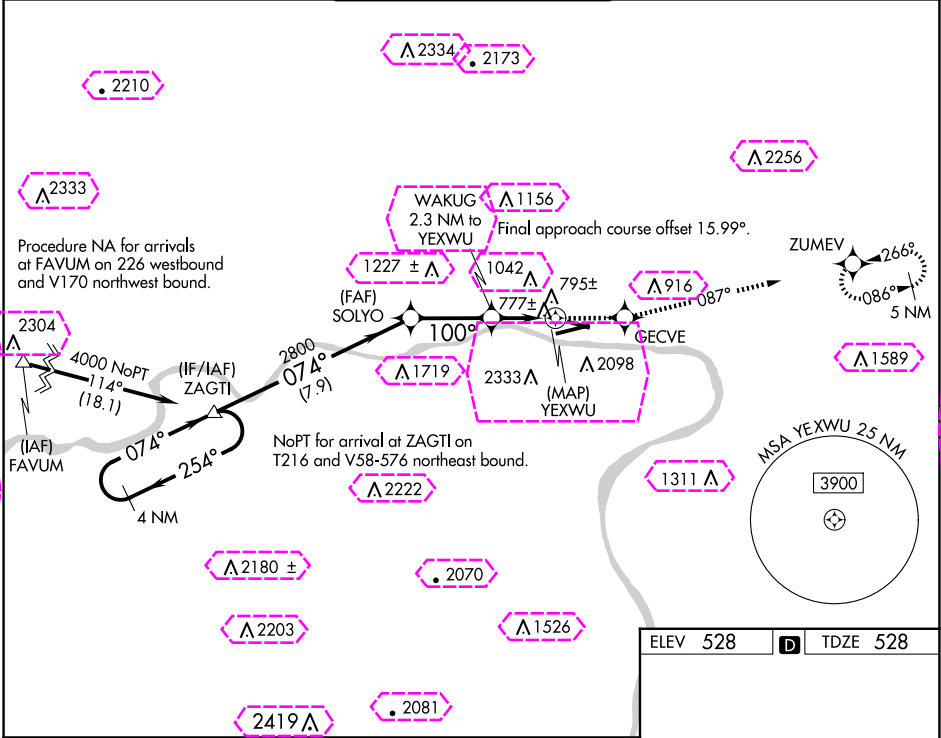
WAAS CH 49024 W12A	APP CRS 100°	Rwy Idg 4273 TDZE 528 Apt Elev 528
--	------------------------	---

RNAV (GPS) RWY 12

WILLIAMSPORT RGNL (IPT)

<p>▼ ▲ ❄️ -14°C</p>	<p>Rwy 12 helicopter visibility reduction below 1 SM NA. DME/DME RNP-0.3 NA. Straight-in Rwy 12 NA at night, Circling Rwy 12, 30 NA at night. Circling NA south of Rwy 9 and southwest of Rwy 30.</p>	<p>MISSED APPROACH: Climb to 4300 direct GECVE then on track 087° to ZUMEV and hold, continue climb-in-hold to 4300.</p>
-----------------------------	---	--

ASOS 125.225	NEW YORK CENTER 124.9	WILLIAMSPORT TOWER ★ 119.1 (CTAF) 257.8	GND CON 121.9	UNICOM 122.95
------------------------	---------------------------------	---	-------------------------	-------------------------



CATEGORY	A	B	C	D
LP MDA	1100-1	572 (600-1)	NA	NA
LNAV MDA	1380-1 852 (900-1)	1380-1¼ 852 (900-1¼)	NA	NA
CIRCLING	1380-1¼ 852 (900-1¼)	1500-1½ 972 (1000-1½)	NA	NA

ELEV 528 D TDZE 528

REIL Rwy 9
MIRL Rwy 12-30
HIRL Rwy 9-27

WILLIAMSPORT, PENNSYLVANIA

AL-457 (FAA)

25219

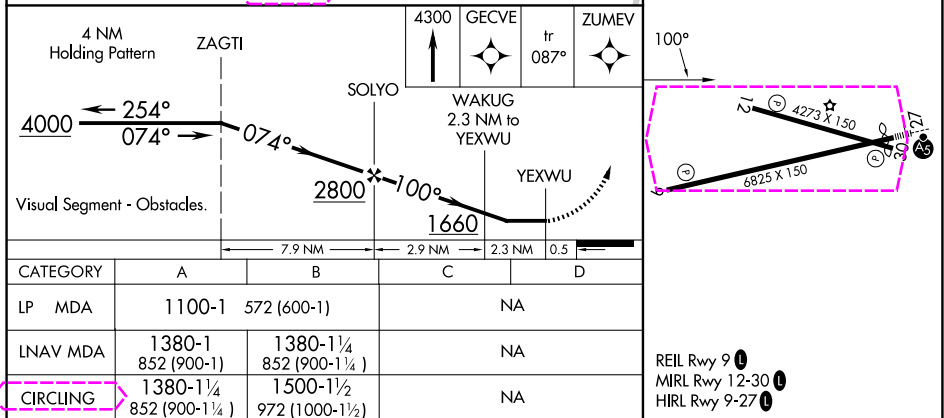
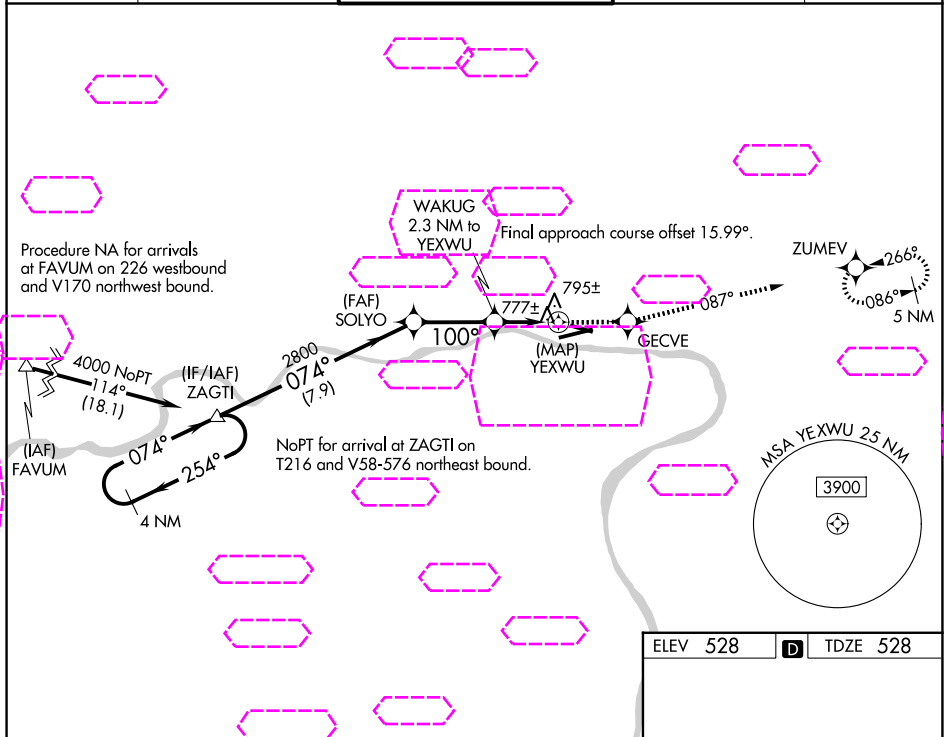
WAAS CH 49024 W12A	APP CRS 100°	Rwy Ldg 4273 TDZE 528 Apt Elev 528
--	------------------------	---

RNAV (GPS) RWY 12

WILLIAMSPORT RGNL (IPT)

 -13°C	Rwy 12 helicopter visibility reduction below 1 SM NA. DME/DME RNP-0.3 NA. Straight-in Rwy 12 NA at night, Circling Rwy 12, 30 NA at night. Circling NA south of Rwy 9 and southwest of Rwy 30.	MISSED APPROACH: Climb to 4300 direct GECVE then on track 087° to ZUMEV and hold, continue climb-in-hold to 4300.
----------------------	---	---

ASOS 125.225	NEW YORK CENTER 124.9	WILLIAMSPORT TOWER ★ 119.1 (CTAF) 257.8	GND CON 121.9	UNICOM 122.95
------------------------	---------------------------------	---	-------------------------	-------------------------



WILLIAMSPORT, PENNSYLVANIA

Amtd 1 22JUN17

41°15'N-76°55'W

WILLIAMSPORT RGNL (IPT)
RNAV (GPS) RWY 12

REIL Rwy 9
MIRL Rwy 12-30
HIRL Rwy 9-27