




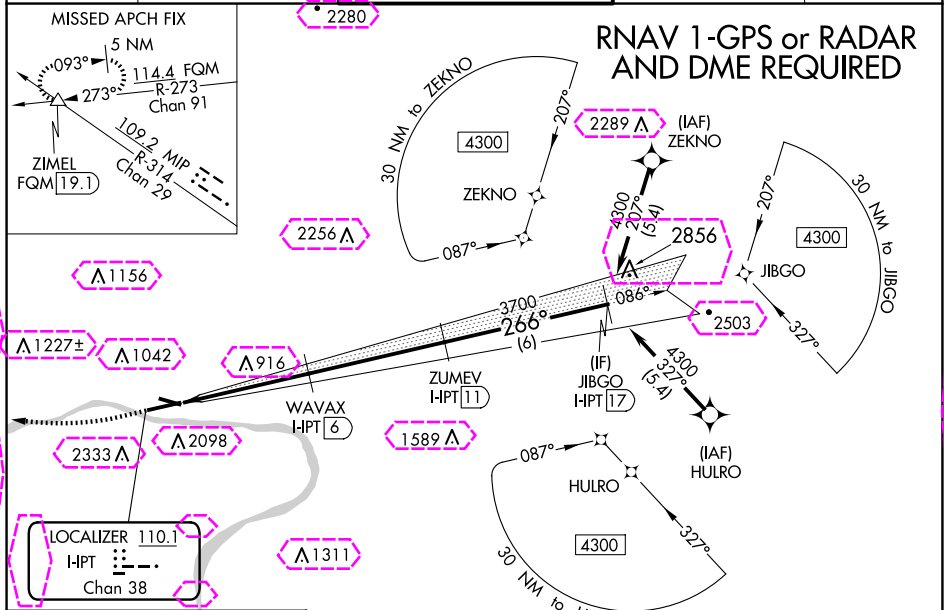


LOC/DME I-PT 110.1 Chan 38	APP CRS 266°	Rwy Idg 6063 TDZE 527 Apt Elev 528
--	------------------------	---

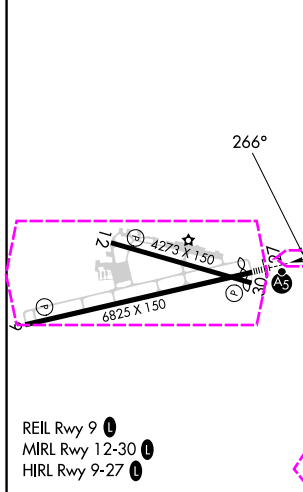
ILS or LOC RWY 27
WILLIAMSPORT RGNL (IPT)

  	<p>Inop table does not apply to S-ILS 27. Circling NA south of Rwy 9 and southwest of Rwy 30.</p> <p>Circling Rwy 12, 30 NA at night. Rwy 27 helicopter visibility reduction below $\frac{3}{4}$ SM NA. DME required.</p>	 	<p>MISSED APPROACH: Climb to 980 then climbing right turn to 4500 on heading 290° and on MIP VORTAC R-314 to ZIMEL INT/FQM 19.1 DME and hold, continue climb-in-hold to 4500.</p>
---	--	---	---

ASOS 125.225	NEW YORK CENTER 124.9	WILLIAMSPORT TOWER ★ 119.1 (CTAF) 0 257.8	GND CON 121.9	UNICOM 122.95
-----------------	--------------------------	--	------------------	------------------



ELEV 528	D	TDZE 527
----------	----------	----------



980 ↑	4500 hdg R-314 290°	MIP R-314	ZIMEL △				
*LOC only.				*I-PT 1.2			
*I-PT 4.1				*I-PT 6			
*I-PT 11				*I-PT 17			
266°				2100			
3700				4300			
GS 3.00°				TCH 48			
2.9 NM				1.9 NM			
5 NM				6 NM			
CATEGORY	A		B		C		D
S-ILS 27	777-3/4 250 (300-3/4)						
S-LOC 27	1500-3/4 973 (1000-3/4)		1500-1 973 (1000-1)		1500-2 1/2 1312 (1400-3)		973 (1000-2 1/2)
CIRCLING	1500-1 1/4 972 (1000-1 1/4)		1500-1 1/2 972 (1000-1 1/2)		1840-3 1312 (1400-3)		2060-3 1532 (1600-3)

WILLIAMSPORT, PENNSYLVANIA

AL-457 (FAA)

25219

LOC/DME I-PIT	APP CRS	Rwy Idg	6063
110.1	266°	TDZE	527
Chan 38		Apt Elev	528

ILS or LOC RWY 27

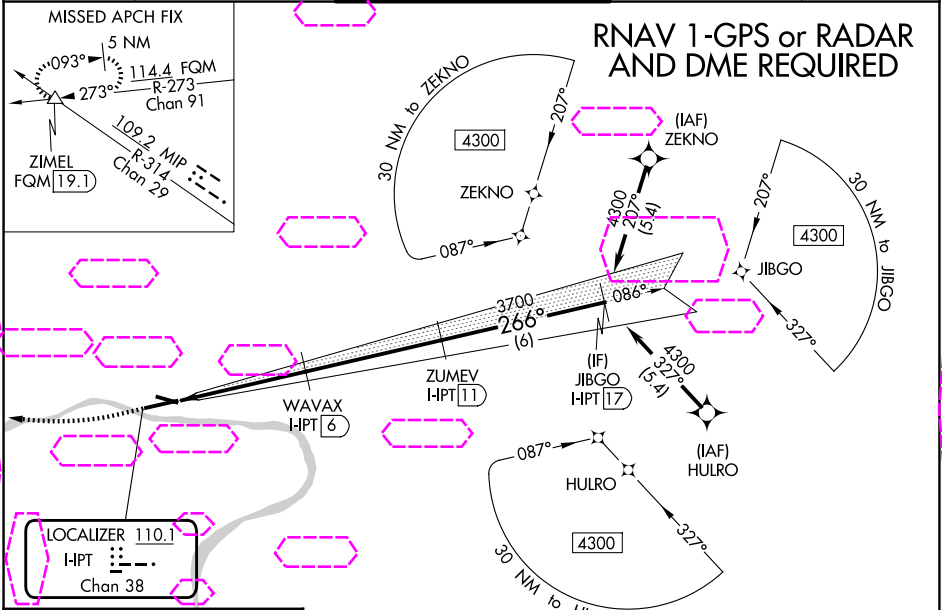
WILLIAMSPORT RGNL (IPT)

⚠ Inop table does not apply to S-ILS 27. Circling NA south of Rwy 9 and southwest of Rwy 30. Circling Rwy 12, 30 NA at night. Rwy 27 helicopter visibility reduction below ¼ SM NA. DME required.

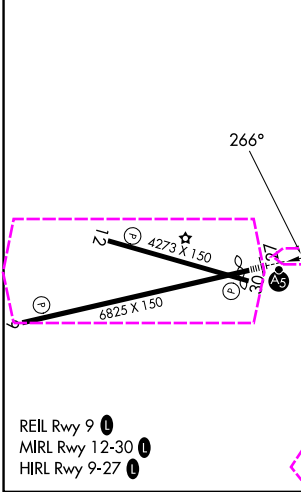
MALS

MISSED APPROACH: Climb to 980 then climbing right turn to 4500 on heading 290° and on MIP VORTAC R-314 to ZIMEL INT/FQM 19.1 DME and hold, continue climb-in-hold to 4500.

ASOS 125.225	NEW YORK CENTER 124.9	WILLIAMSPORT TOWER ★ 119.1 (CTAF) 257.8	GND CON 121.9	UNICOM 122.95
-----------------	--------------------------	--	------------------	------------------



ELEV 528	D	TDZE 527
----------	---	----------



980	4500	MIP R-314	ZIMEL △	
↑	hdg 290°			
*LOC only.				
I-PIT 1.2	*I-PIT 4.1	WAVAX I-PIT 6	ZUMEV I-IPT 11	
JIBGO I-IPT 17				
*2100				
3700				
4300				
GS 3.00° TCH 48				
2.9 NM 1.9 NM 5 NM 6 NM				
CATEGORY	A	B	C	D
S-ILS 27	777-¾ 250 (300-¾)			
S-LOC 27	1500-¾ 973 (1000-¾)	1500-1 973 (1000-1)	1500-2½ 973 (1000-2½)	
CIRCLING	1500-1¼ 972 (1000-1¼)	1500-1½ 972 (1000-1½)	1840-3 1312 (1400-3)	2060-3 1532 (1600-3)

NE-4, 07 AUG 2025 to 04 SEP 2025

NE-4, 07 AUG 2025 to 04 SEP 2025