

WESTFIELD/SPRINGFIELD, MASSACHUSETTS

AL-446 (FAA)

25163

BAF VORTAC	APP CRS	Rwy Ldg	9000
113.0	025°	TDZE	264
Chan 77		Apt Elev	270

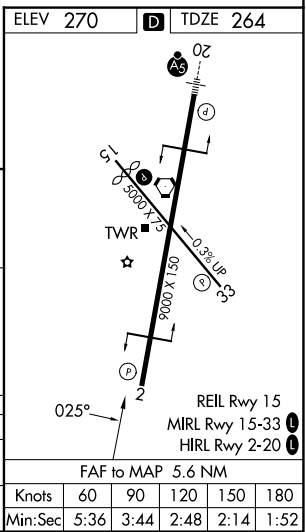
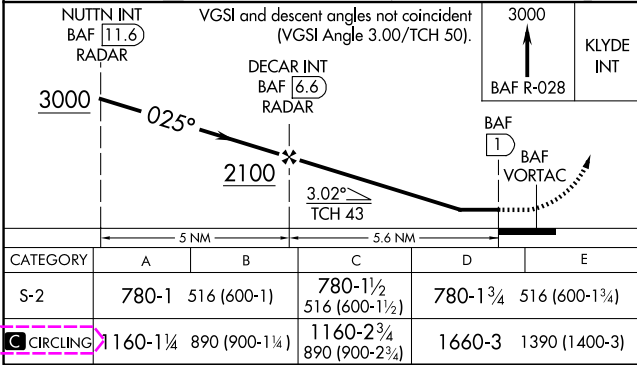
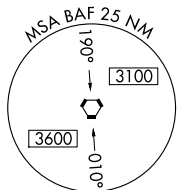
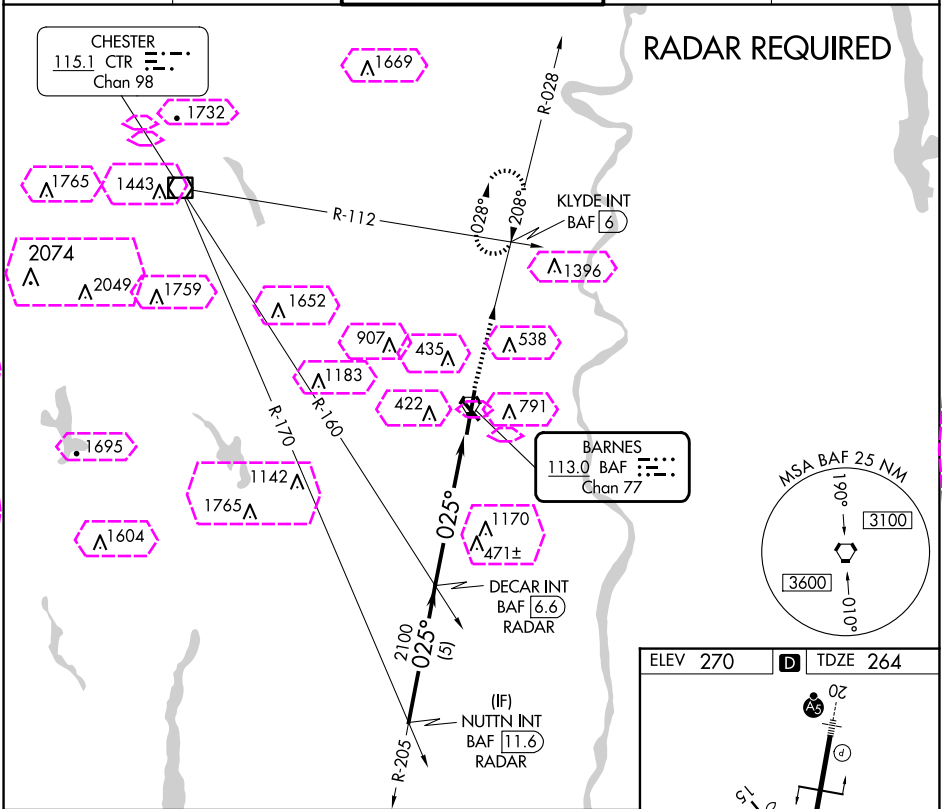
VOR or TACAN RWY 2

WESTFIELD-BARNES RGNL (BAF)

Night landing: Rwy 15 NA.
Helicopter visibility reduction below ¾ SM NA.

MISSED APPROACH: Climb to 3000 via the BAF VORTAC R-028 to KLYDE INT and hold.

ATIS	BRADLEY APP CON	WESTFIELD TOWER ★	GND CON	CLNC DEL
127.1 263.15	125.35 281.5	125.075 (CTAF) 251.1	121.7 289.4	121.7



WESTFIELD/SPRINGFIELD, MASSACHUSETTS					WESTFIELD-BARNES RGNL (BAF)				
Amdt 4G 03MAR16					42°09'N-72°43'W				
					VOR or TACAN RWY 2				

WESTFIELD/SPRINGFIELD, MASSACHUSETTS


AL-446 (FAA)

25219

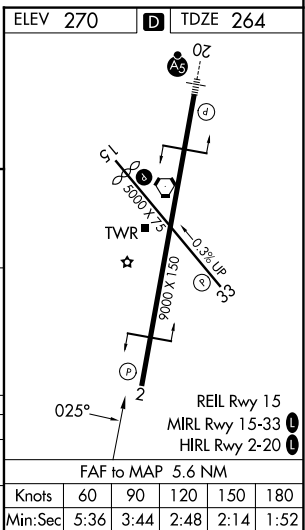
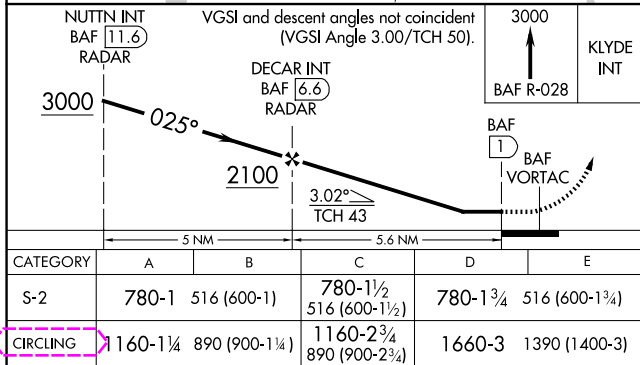
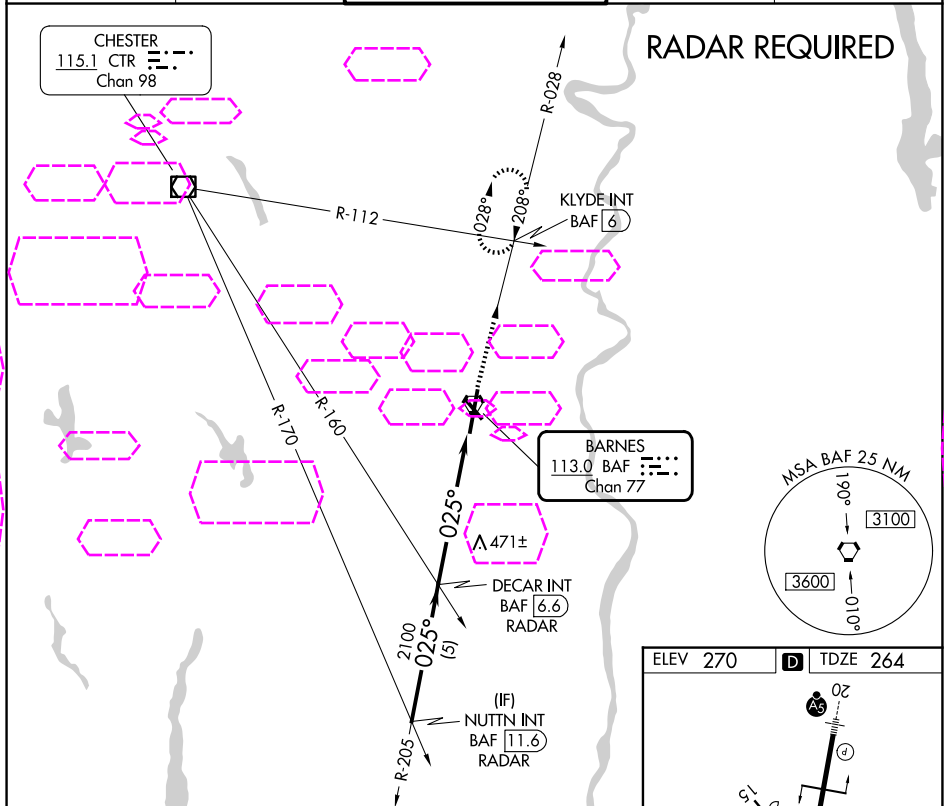
BAF VORTAC	APP CRS	Rwy Ldg	9000
113.0	025°	TDZE	264
Chan 77		Apt Elev	270

VOR or TACAN RWY 2

WESTFIELD-BARNES RGNL (BAF')

 -20°C	Night landing: Rwy 15 NA. Helicopter visibility reduction below ¾ SM NA.	MISSED APPROACH: Climb to 3000 via the BAF VORTAC R-028 to KLYDE INT and hold.
---	---	--

ATIS 127.1 263.15	YANKEE APP CON 125.35 281.5	WESTFIELD TOWER ★ 125.075 (CTAF) 0 251.1	GND CON 121.7 289.4	CLNC DEL 121.7
----------------------	--------------------------------	---	------------------------	-------------------



WESTFIELD/SPRINGFIELD, MASSACHUSETTS
Amdt 4G 03MAR16

42°09'N-72°43'W

WESTFIELD-BARNES RGNL (BAF')

VOR or TACAN RWY 2

NE-1, 07 AUG 2025 to 04 SEP 2025

NE-1, 07 AUG 2025 to 04 SEP 2025