

WESTFIELD/SPRINGFIELD, MASSACHUSETTS

AL-446 (FAA)

25163

|  |                        |   |
|--|------------------------|---|
| BAF VORTAC<br><b>113.0</b><br>Chan <b>77</b> | APP CRS<br><b>208°</b> | Rwy Ldg<br>TDZE <b>270</b><br>Apt Elev <b>270</b> |
|--|------------------------|---|

# VOR RWY 20

WESTFIELD-BARNES RGNL (BAF)

**V**  
**A**

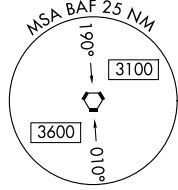
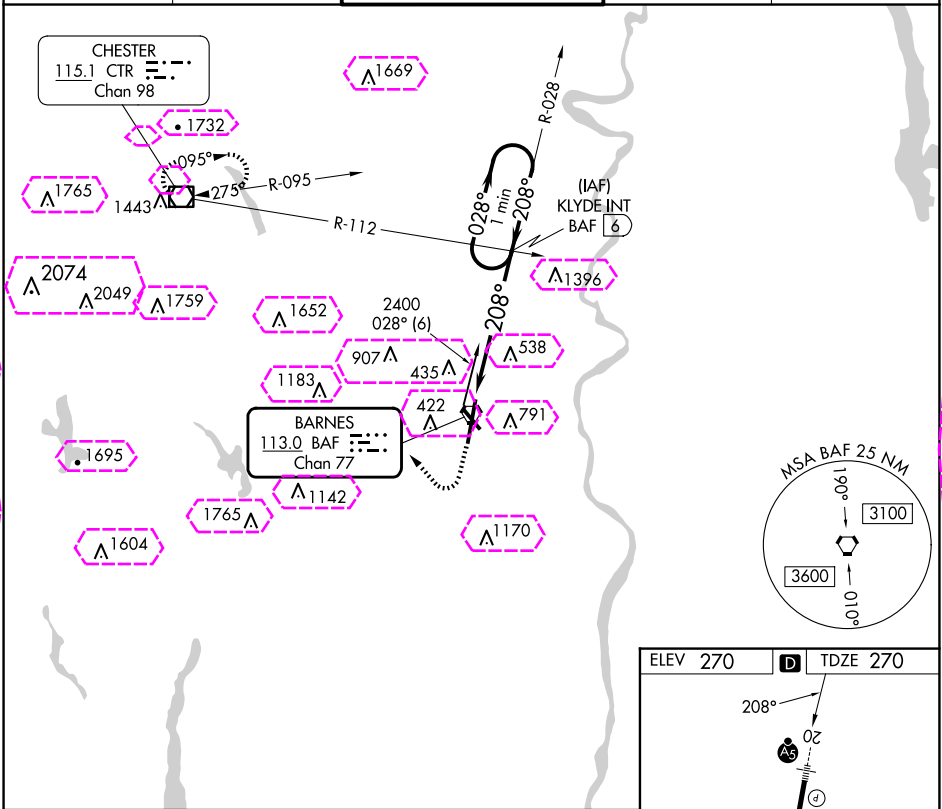
For inoperative MALSR, increase Cat A/B visibility to RVR 5000. Night landing: Rwy 15 NA.

MALSR

**A5**

MISSED APPROACH: Climb to 1200, then climbing right turn to 4000 direct CTR VOR/DME and hold, continue climb in hold to 4000.

|                             |  |  |                               |                          |
|-----------------------------|--|--|-------------------------------|--------------------------|
| ATIS<br><b>127.1 263.15</b> | BRADLEY APP CON<br><b>125.35 281.5</b> | WESTFIELD TOWER ★<br><b>125.075 (CTAF) 251.1</b> | GND CON<br><b>121.7 289.4</b> | CLNC DEL<br><b>121.7</b> |
|-----------------------------|--|--|-------------------------------|--------------------------|



1200 4000 CTR

↑ ↻ □

KLYDE INT BAF 6

One Minute Holding Pattern

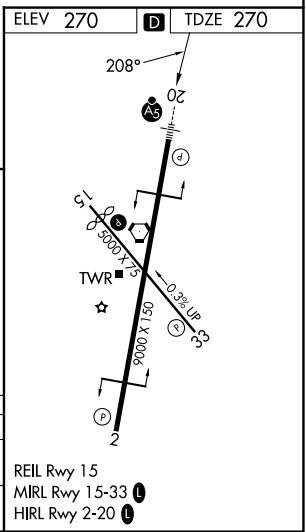
BAF VORTAC BAF 2

208° 2100 2400

3.04° TCH 43

VGSI and descent angles not coincident (VGSI Angle 3.00/TCH 50).

| CATEGORY        | A       | B            | C                       | D                       |
|-----------------|---------|--------------|-------------------------|-------------------------|
| S-20            | 940/40  | 670 (700-¾)  | 940/60<br>670 (700-1¼)  | 940-1½<br>670 (700-1½)  |
| <b>CIRCLING</b> | 1160-1¼ | 890 (900-1¼) | 1160-2¾<br>890 (900-2¾) | 1660-3<br>1390 (1400-3) |



WESTFIELD/SPRINGFIELD, MASSACHUSETTS

Amdt 20F 03MAR16

42°09'N-72°43'W

WESTFIELD-BARNES RGNL (BAF)

# VOR RWY 20

WESTFIELD/SPRINGFIELD, MASSACHUSETTS

AL-446 (FAA)

25219

|  |                        |   |
|--|------------------------|---|
| BAF VORTAC<br><b>113.0</b><br>Chan <b>77</b> | APP CRS<br><b>208°</b> | Rwy Ldg <b>8919</b><br>TDZE <b>270</b><br>Apt Elev <b>270</b> |
|--|------------------------|---|

# VOR RWY 20

WESTFIELD-BARNES RGNL (BAF)

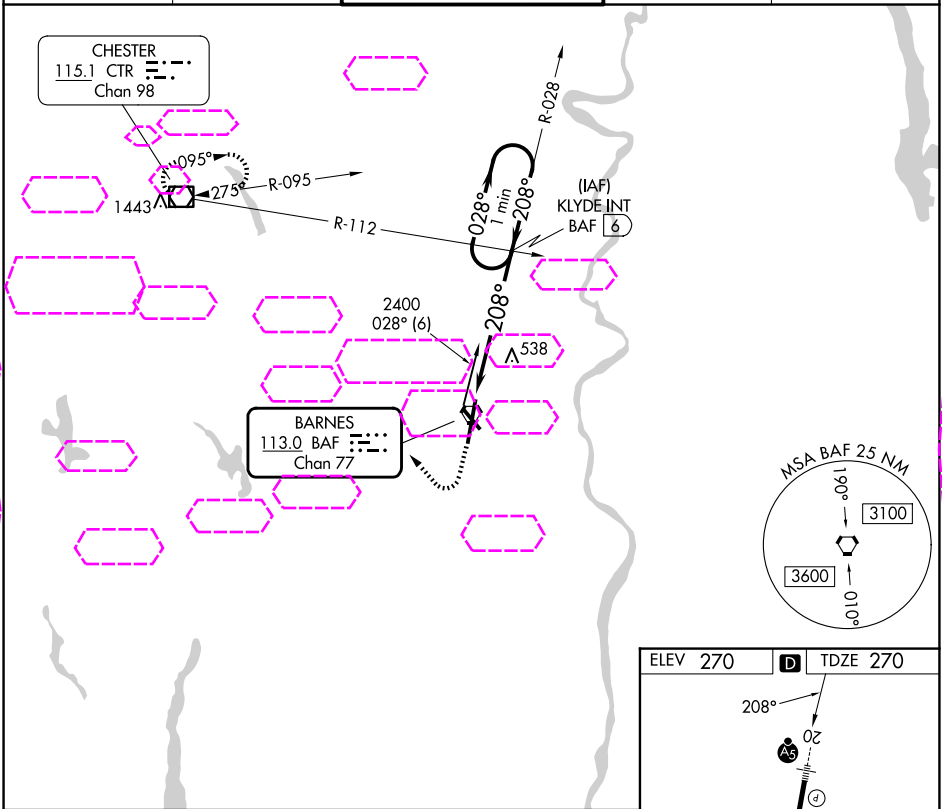
**V**  
**A**

For inoperative MALSR, increase Cat A/B visibility to RVR 5000. Night landing: Rwy 15 NA.

MALSR

MISSED APPROACH: Climb to 1200, then climbing right turn to 4000 direct CTR VOR/ DME and hold, continue climb in hold to 4000.

|                             |                                       |  |                               |                          |
|-----------------------------|---------------------------------------|--|-------------------------------|--------------------------|
| ATIS<br><b>127.1 263.15</b> | YANKEE APP CON<br><b>125.35 281.5</b> | WESTFIELD TOWER ★<br><b>125.075 (CTAF) 251.1</b> | GND CON<br><b>121.7 289.4</b> | CLNC DEL<br><b>121.7</b> |
|-----------------------------|---------------------------------------|--|-------------------------------|--------------------------|



1200 4000 CTR

KLYDE INT BAF 6

One Minute Holding Pattern

BAF VORTAC

BAF 2

208°

2100

3.04° TCH 43

VGSI and descent angles not coincident (VGSI Angle 3.00/TCH 50).

| CATEGORY | A       | B            | C                       | D                       |
|----------|---------|--------------|-------------------------|-------------------------|
| S-20     | 940/40  | 670 (700-¾)  | 940/60<br>670 (700-1¼)  | 940-1½<br>670 (700-1½)  |
| CIRCLING | 1160-1¼ | 890 (900-1¼) | 1160-2¾<br>890 (900-2¾) | 1660-3<br>1390 (1400-3) |

ELEV 270 TDZE 270

208°

20

35

0-3000 X 75

0-3000 X 150

0.3% UP

33

2

TWR

REIL Rwy 15

MIRL Rwy 15-33

HIRL Rwy 2-20

WESTFIELD/SPRINGFIELD, MASSACHUSETTS

Amdt 20F 03MAR16

42°09'N-72°43'W

WESTFIELD-BARNES RGNL (BAF)

# VOR RWY 20