

WAAS CH <b>77817</b> <b>W02A</b>	APP CRS <b>024°</b>	Rwy Ldg <b>9000</b> TDZE <b>264</b> Apt Elev <b>270</b>
--	------------------------	---

# RNAV (GPS) RWY 2

## WESTFIELD-BARNES RGNL (BAF)

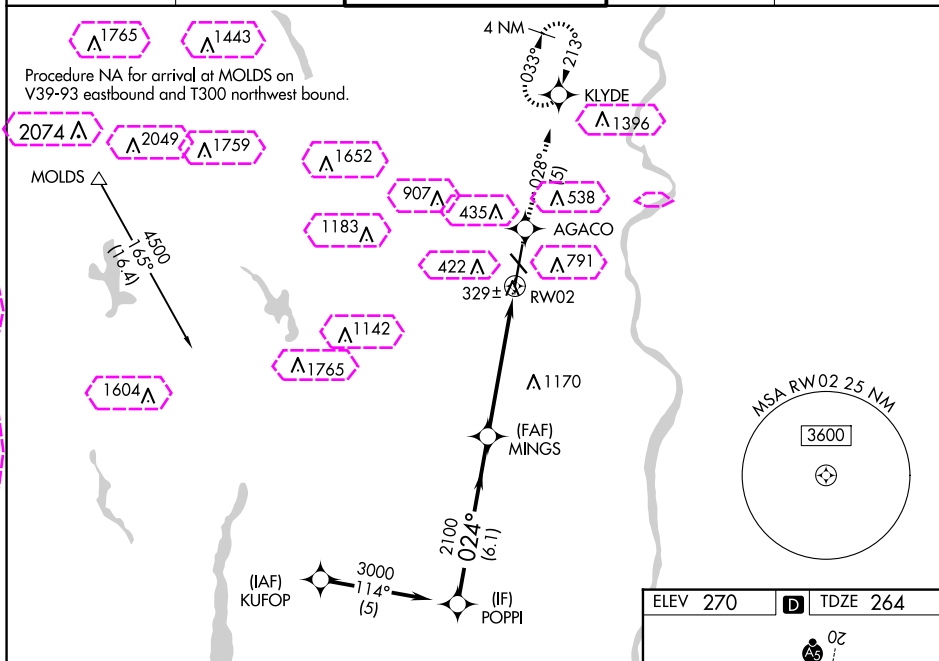
## RNP APCH.

**Baro-VNAV NA** when using Bradley Intl altimeter setting. For uncompensated Baro-VNAV systems, LNAV/VNAV NA below -15°C or above 54°C.

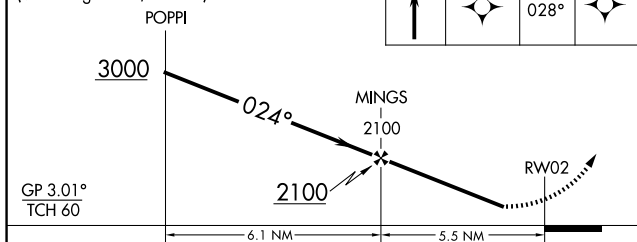
**-20°C** When local altimeter setting not received, use Bradley Intl altimeter setting and increase all DA 44 feet and all MDA 60 feet; increase LNAV/VNAV all Cats visibility ¼ mile. Rwy 2 helicopter visibility reduction below ¼ SM NA.

**MISSED APPROACH:** Climb to 3000 direct AGACO and on track 028° to KLYDE and hold, continue climb-in-hold to 3000.

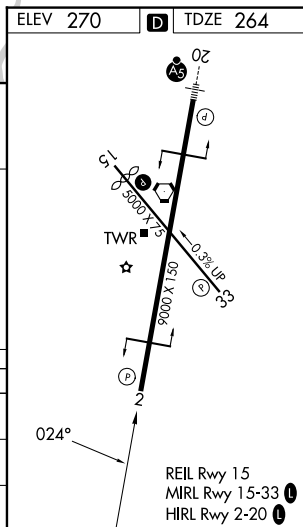
ATIS 127.1 263.15	BRADLEY APP CON 125.35 281.5	WESTFIELD TOWER ★ 125.075 (CTAF) 0 251.1	GND CON 121.7 289.4	CLNC DEL 121.7
----------------------	---------------------------------	---	------------------------	-------------------



VGSI and RNAV glidepath not coincident (VGSI Angle 3.00/TCH 50).



CATEGORY	A	B	C	D	E
LPV DA	515-1 251 (300-1)				
LNAV/ VNAV DA	858-2 594 (600-2)				
LNAV MDA	1360-1¼ 1096 (1100-1¼)	1360-1½ 1096 (1100-1½)	1360-3	1096 (1100-3)	



WESTFIELD/SPRINGFIELD, MASSACHUSETTS

AL-446 (FAA)

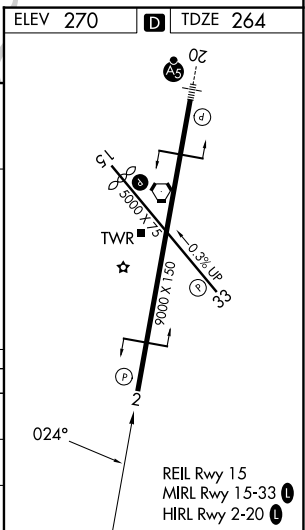
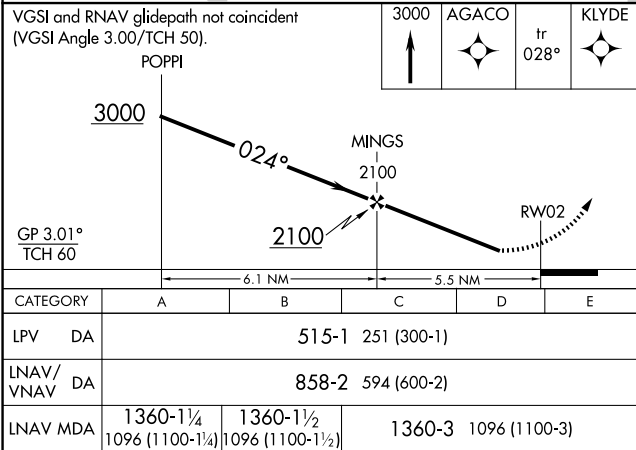
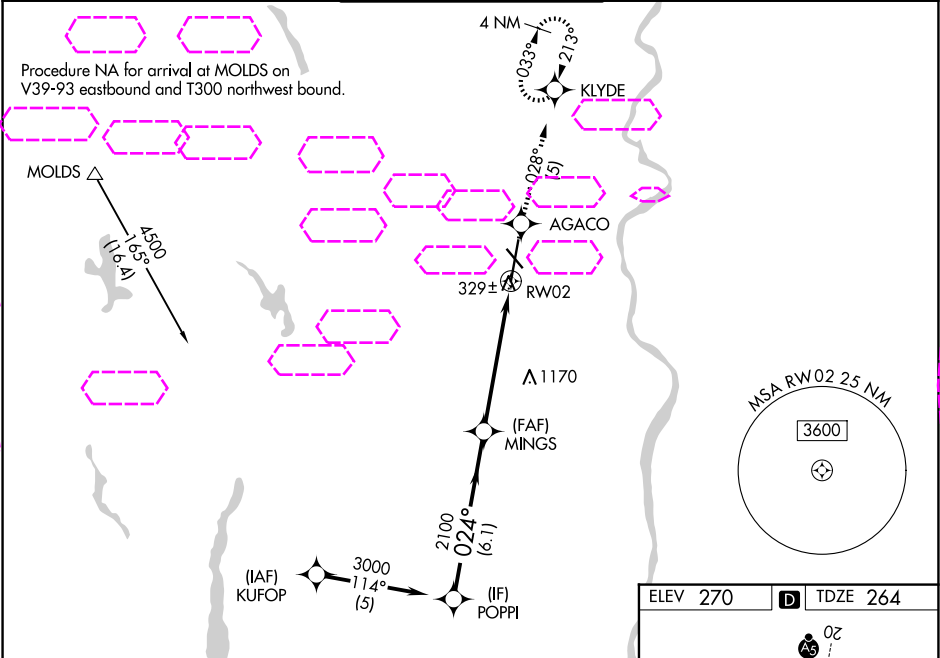
25219

WAAS CH <b>77817</b> <b>W02A</b>	APP CRS <b>024°</b>	Rwy Ldg TDZE <b>264</b> Apt Elev <b>270</b>
--	------------------------	---

**RNAV (GPS) RWY 2**  
WESTFIELD-BARNES RGNL (BAF')

RNP APCH.	Baro-VNAV NA when using Bradley Intl altimeter setting. For uncompensated Baro-VNAV systems, LNAV/VNAV NA below -15°C or above 54°C. When local altimeter setting not received, use Bradley Intl altimeter setting and increase all DA 44 feet and all MDA 60 feet; increase LNAV/VNAV all Cats visibility ¼ mile. Rwy 2 helicopter visibility reduction below ¾ SM NA.	MISSED APPROACH: Climb to 3000 direct AGACO and on track 028° to KLYDE and hold, continue climb-in-hold to 3000.
-----------	--	--

ATIS <b>127.1 263.15</b>	YANKEE APP CON <b>125.35 281.5</b>	WESTFIELD TOWER ★ <b>125.075 (CTAF) 025.1</b>	GND CON <b>121.7 289.4</b>	CINC DEL <b>121.7</b>
-----------------------------	---------------------------------------	--	-------------------------------	--------------------------



WESTFIELD/SPRINGFIELD, MASSACHUSETTS  
Orig-D 18JUL19

42°09'N-72°43'W

WESTFIELD-BARNES RGNL (BAF')  
**RNAV (GPS) RWY 2**

NE-1, 07 AUG 2025 to 04 SEP 2025

NE-1, 07 AUG 2025 to 04 SEP 2025