

WESTFIELD/SPRINGFIELD, MASSACHUSETTS

AL-446 (FAA)

25163

WAAS CH 86405 W20A	APP CRS 204°	Rwy Ldg TDZE Apt Elev 270	8919 270 270
--	------------------------	--	---

RNAV (GPS) RWY 20

WESTFIELD-BARNES RGNL (BAF)

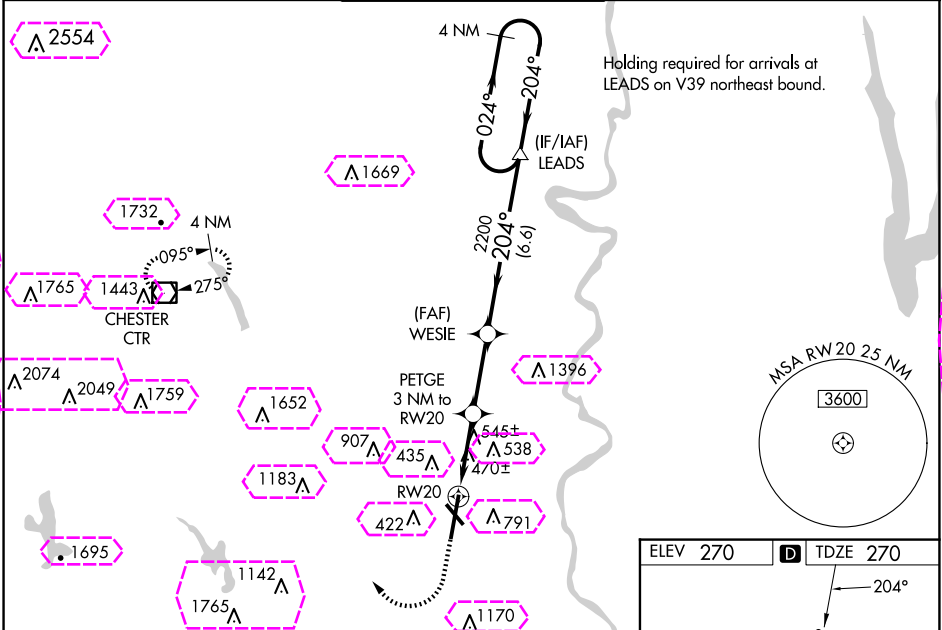
⚠ Baro-VNAV NA when using Bradley Intl altimeter setting. For uncompensated Baro-VNAV systems, LNAV/VNAV NA below -15°C (5°F) or above 54°C (130°F). DME/DME RNP-0.3 NA. When local altimeter setting not received, use Bradley Intl altimeter setting and increase LPV DA to 561; LNAV/VNAV DA to 996 and increase all Cats visibility to 2¼; all MDA 60 feet and LNAV Cats B, C, D and E visibility to 1¼. For inoperative MALSR, increase LPV Cat E visibility to RVR 4000, LNAV/VNAV all Cats visibility to 2½, LNAV Cat E visibility to 1½. Night landing: Rwy 1.5 NA.

❄ -20°C

MALSR

MISSED APPROACH:
Climb to 1700 then climbing right turn to 4000 direct CTR VOR/DME and hold.

ATIS 127.1 263.15	BRADLEY APP CON 125.35 281.5	WESTFIELD TOWER ★ 125.075 (CTAF) 0 251.1	GND CON 121.7 289.4	CLNC DEL 121.7
-----------------------------	--	--	-------------------------------	--------------------------



1700 4000 CTR

* LNAV only.

PETGE 3 NM to RW20

WESIE 2200

LEADS

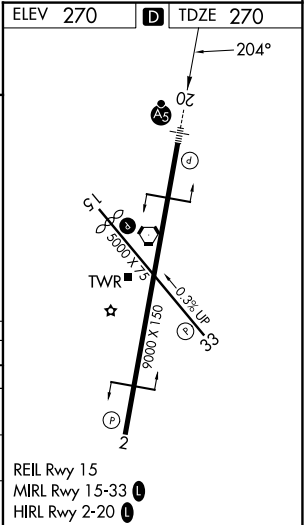
4 NM Holding Pattern

3500

GP 3.00° TCH 50

3 NM 2.9 NM 6.6 NM

CATEGORY	A	B	C	D	E
LPV DA		520/24	250 (300-½)		
LNAV/VNAV DA		955-1⅞	685 (700-1⅞)		
LNAV MDA	800/24	530 (600-½)	800/55	530 (600-1)	
CIRCLING	1160-1¼	890 (900-1¼)	1160-2¾ 890 (900-2¾)	1660-3	1390 (1400-3)



WESTFIELD/SPRINGFIELD, MASSACHUSETTS
Amdt 1D 03MAR16

42°09'N-72°43'W

WESTFIELD-BARNES RGNL (BAF)
RNAV (GPS) RWY 20

WESTFIELD/SPRINGFIELD, MASSACHUSETTS

AL-446 (FAA)

25219


WAAS CH 86405 W20A	APP CRS 204°	Rwy Ldg TDZE Apt Elev	8919 270 270
--	------------------------	-----------------------------	---

RNAV (GPS) RWY 20

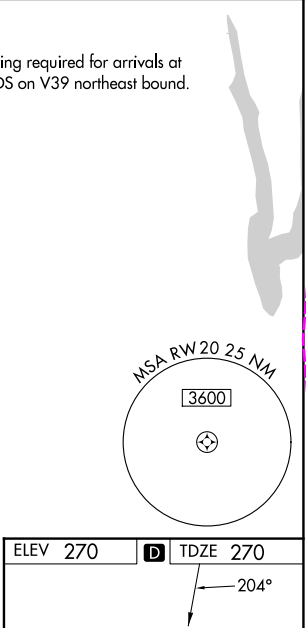
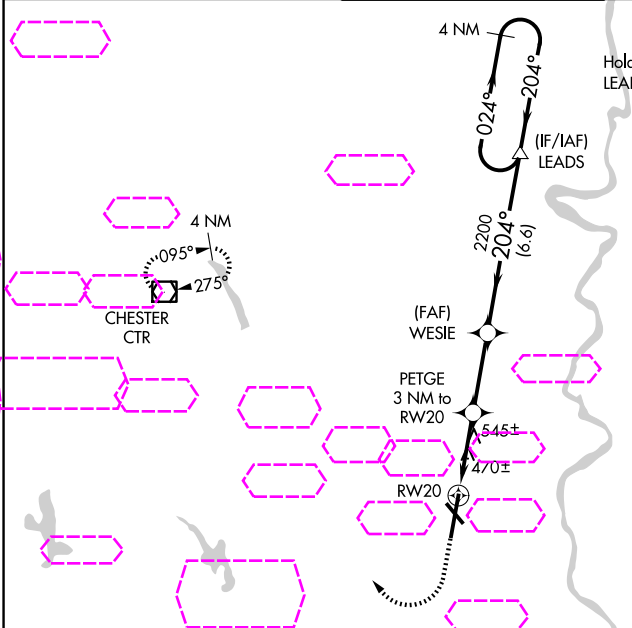
WESTFIELD-BARNES RGNL (B.A.F.)

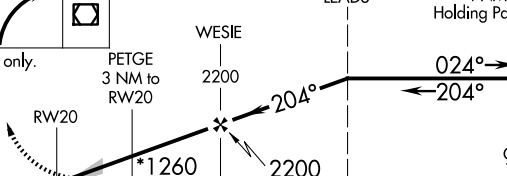
⚠ Baro-VNAV NA when using Bradley Intl altimeter setting. For uncompensated Baro-VNAV systems, LNAV/VNAV NA below -15°C (5°F) or above 54°C (130°F). DME/DME RNP-0.3 NA. When local altimeter setting not received, use Bradley Intl altimeter setting and increase LPV DA to 561; LNAV/VNAV DA to 996 and increase all Cats visibility to 2¼; all MDA 60 feet and LNAV Cats B, C, D and E visibility to 1¼. For inoperative MALSR, increase LPV Cat E visibility to RVR 4000, LNAV/VNAV all Cats visibility to 2½, LNAV Cat E visibility to 1½. Night landing: Rwy 1.5 NA.

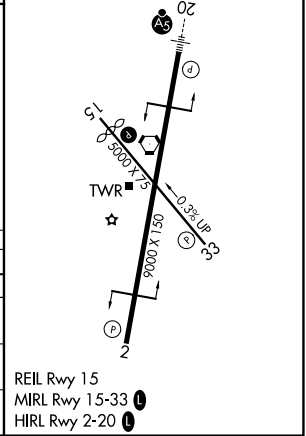
❄ -20°C

MALSR

MISSED APPROACH:
Climb to 1700 then climbing right turn to 4000 direct CTR VOR/DME and hold.

ATIS 127.1 263.15	YANKEE APP CON 125.35 281.5	WESTFIELD TOWER ★ 125.075 (CTAF) 0 251.1	GND CON 121.7 289.4	CLNC DEL 121.7
-----------------------------	--	---	--------------------------------------	---------------------------------



1700 ↑	4000 ↷	CTR ◻				
* LNAV only.						
PETGE 3 NM to RW20			WESIE 2200			LEADS 4 NM Holding Pattern
RW20			2200			024° → 3500 ← 204°
*1260			2200			GP 3.00° TCH 50
3 NM			2.9 NM			6.6 NM
CATEGORY	A	B	C	D	E	
LPV DA	520/24		250 (300-½)			
LNAV/ VNAV	955-1⅞		685 (700-1⅞)			
LNAV MDA	800/24	530 (600-½)	800/55		530 (600-1)	
CIRCLING	1160-1¼	890 (900-1¼)	1160-2¾ 890 (900-2¾)	1660-3	1390 (1400-3)	



WESTFIELD/SPRINGFIELD, MASSACHUSETTS
Amdt 1D 03MAR16

42°09'N-72°43'W

WESTFIELD-BARNES RGNL (B.A.F.)
RNAV (GPS) RWY 20

NE-1, 07 AUG 2025 to 04 SEP 2025

NE-1, 07 AUG 2025 to 04 SEP 2025