

WESTFIELD/SPRINGFIELD, MASSACHUSETTS

AL-446 (FAA)

25163

LOC I-BAF <b>111.9</b>	APP CRS <b>204°</b>	Rwy Ldg TDZE Apt Elev	<b>8919</b> <b>270</b> <b>270</b>
---------------------------	------------------------	-----------------------------	---

# ILS or LOC RWY 20

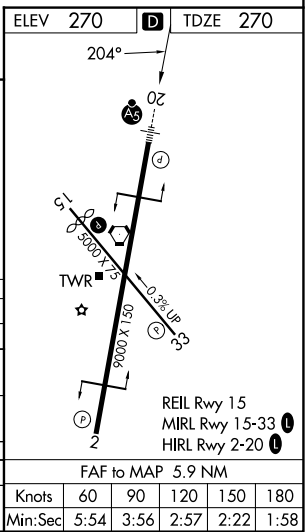
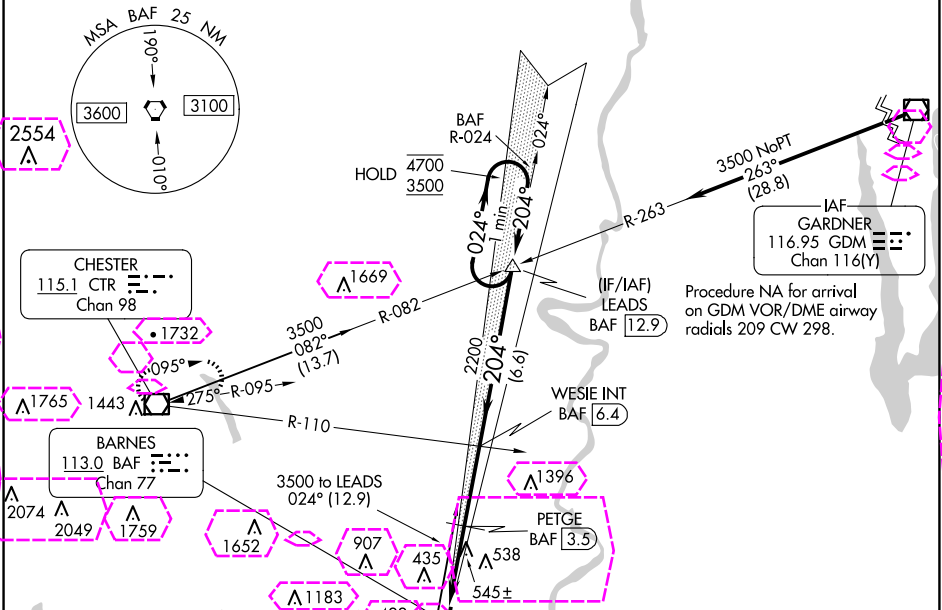
WESTFIELD-BARNES RGNL (BAF')

**⚠** Circling Rwy 15 NA at night. DME from BAF VORTAC. DME use requires simultaneous reception of I-BAF and BAF DME. For inop ALS, increase S-ILS 20 Cat E visibility to RVR 4000; increase S-LOC 20 Cat E visibility to 3 SM; increase PETGE fix minimums S-LOC 20 Cat E visibility to 1½ SM.

**⚠** -20°C

**MALSR** MISSED APPROACH: Climb to 1300 then climbing right turn to 4000 direct CTR VOR/DME and hold, continue climb-in-hold to 4000.

ATIS <b>127.1 263.15</b>	<b>BRADLEY APP CON</b> <b>125.35 281.5</b>	WESTFIELD TOWER ★ <b>125.075 (CTAF) 0 251.1</b>	GND CON <b>121.7 289.4</b>	CLNC DEL <b>121.7</b>
-----------------------------	---	--	-------------------------------	--------------------------



WESTFIELD/SPRINGFIELD, MASSACHUSETTS  
Amdt 8D 28DEC23

42°09'N-72°43'W

WESTFIELD-BARNES RGNL (BAF')

# ILS or LOC RWY 20

WESTFIELD/SPRINGFIELD, MASSACHUSETTS

AL-446 (FAA)

25219

LOC I-BAF <b>111.9</b>	APP CRS <b>204°</b>	Rwy Ldg TDZE Apt Elev	<b>8919</b> <b>270</b> <b>270</b>
---------------------------	------------------------	-----------------------------	---

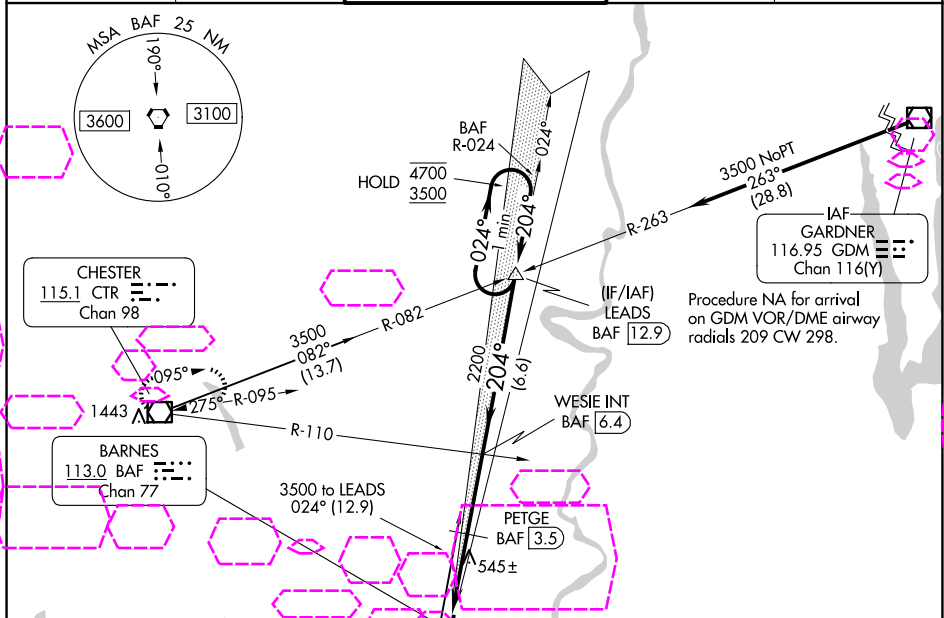
# ILS or LOC RWY 20

WESTFIELD-BARNES RGNL (BAF')

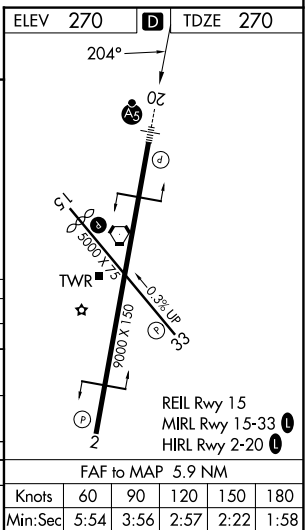
**⚠** Circling Rwy 15 NA at night. DME from BAF VORTAC. DME use requires simultaneous reception of I-BAF and BAF DME. For inop ALS, increase S-ILS 20 Cat E visibility to RVR 4000; increase S-LOC 20 Cat E visibility to 3 SM; increase PETGE fix minimums S-LOC 20 Cat E visibility to 1½ SM.

**MALSR** MISSED APPROACH: Climb to 1300 then climbing right turn to 4000 direct CTR VOR/DME and hold, continue climb-in-hold to 4000.

ATIS <b>127.1 263.15</b>	<b>YANKEE APP CON</b> <b>125.35 281.5</b>	WESTFIELD TOWER ★ <b>125.075 (CTAF) 0 251.1</b>	GND CON <b>121.7 289.4</b>	CLNC DEL <b>121.7</b>
-----------------------------	--	--	-------------------------------	--------------------------



1300	4000	CTR	* LOC only.	WESIE INT BAF 6.4	LEADS BAF 12.9	One Minute Holding Pattern
BAF 0.5	BAF 2	PETGE BAF 3.5	*1260	2200	2200	GS 3.00° TCH 50
1.5 NM	1.5 NM	2.9 NM	6.6 NM			
CATEGORY	A	B	C	D	E	
S-ILS 20	520/24 250 (300-½)					
S-LOC 20	1260/40 990 (1000-¾)	1260/55 990 (1000-1)	1260-2½	990 (1000-2½)		
CIRCLING	1260-1¼ 990 (1000-1¼)	1260-1½ 990 (1000-1½)	1260-3 990 (1000-3)	1660-3 1390 (1400-3)		
PETGE FIX MINIMUMS (DME REQUIRED)						
S-LOC 20	800/24	530 (600-½)	800/55	530 (600-1)		
CIRCLING	1160-1¼	890 (900-1¼)	1160-2¾ 890 (900-2¾)	1660-3 1390 (1400-3)		



NE-1, 07 AUG 2025 to 04 SEP 2025

NE-1, 07 AUG 2025 to 04 SEP 2025