

(CSTL9.CCC) 25163

AL-446 (FAA)

WESTFIELD-BARNES RGNL (BAF)

## COASTAL NINE DEPARTURE

WESTFIELD/SPRINGFIELD, MASSACHUSETTS

ATIS  
127.1 263.15  
GND CON  
121.7 289.4  
WESTFIELD TOWER ★  
125.075 (CTAF) 251.1  
BRADLEY DEP CON  
125.35 281.5

**TOP ALTITUDE:**  
**3000**

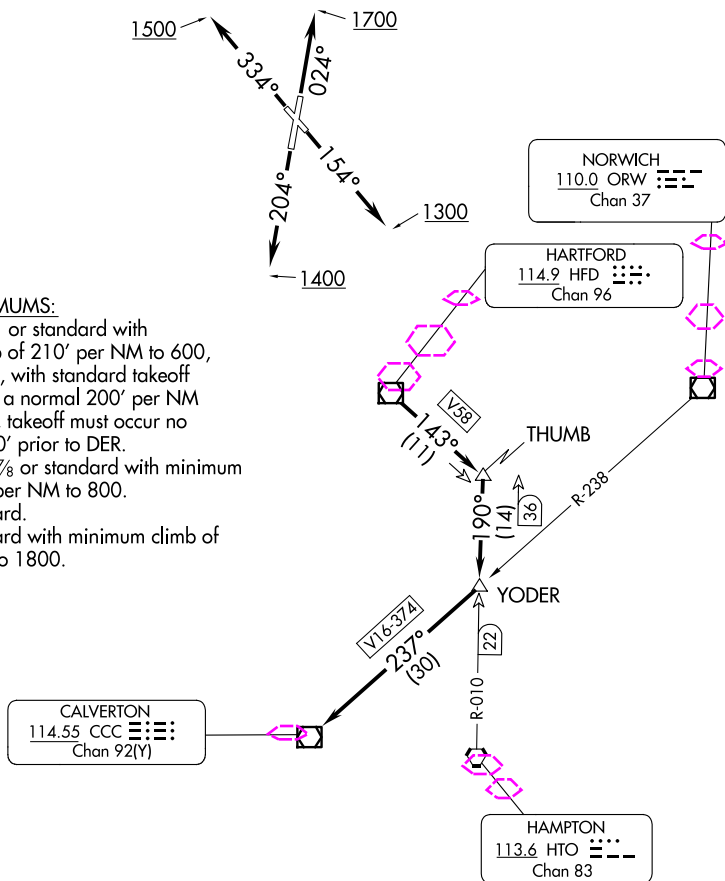
TAKEOFF MINIMUMS:

Rwy 2: 200-1½ or standard with minimum climb of 210' per NM to 600, or alternatively, with standard takeoff minimums and a normal 200' per NM climb gradient, takeoff must occur no later than 1200' prior to DER.

Rwy 15: 400-1⅞ or standard with minimum climb of 460' per NM to 800.

Rwy 20: Standard.

Rwy 33: Standard with minimum climb of 340' per NM to 1800.



NOTE: RADAR required.

NOTE: Initial departure headings are predicated on avoiding noise sensitive areas, flight crew awareness and compliance is important in minimizing noise impacts on surrounding communities.

(NARRATIVE ON FOLLOWING PAGE)

NOTE: Chart not to scale.

## COASTAL NINE DEPARTURE

(CSTL9.CCC) 12AUG21

WESTFIELD/SPRINGFIELD, MASSACHUSETTS

WESTFIELD-BARNES RGNL (BAF)

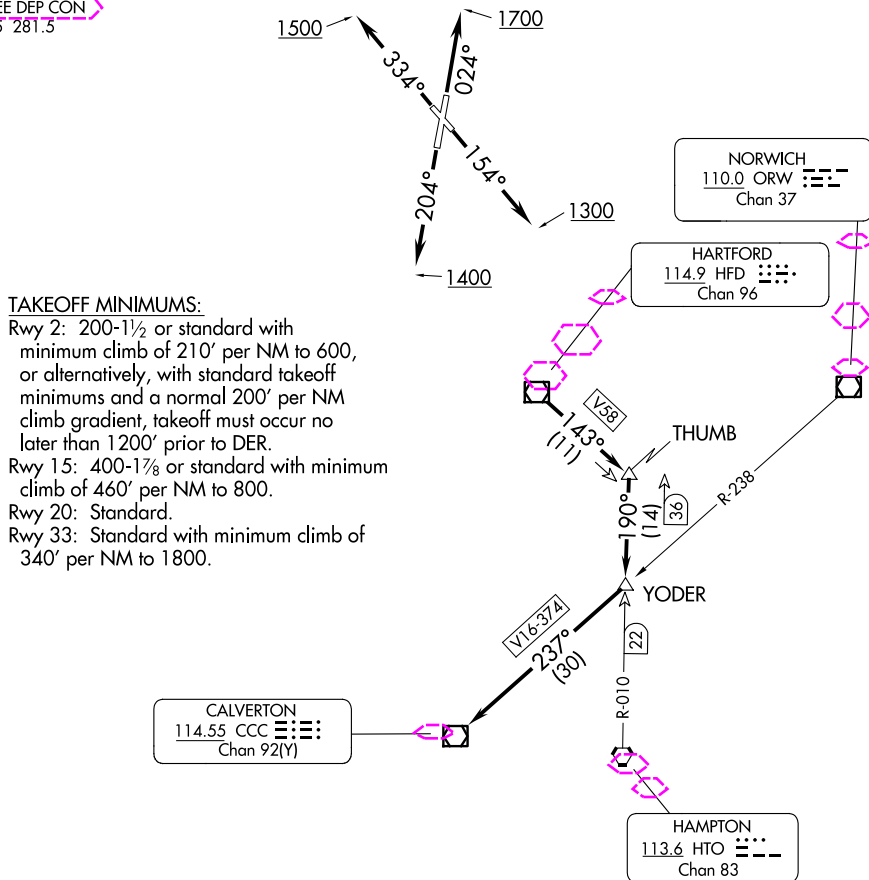
NE-1, 10 JUL 2025 to 07 AUG 2025

NE-1, 10 JUL 2025 to 07 AUG 2025

## COASTAL NINE DEPARTURE

ATIS  
127.1 263.15  
GND CON  
121.7 289.4  
WESTFIELD TOWER ★  
125.075 (CTAF) 251.1  
YANKEE DEP CON  
125.35 281.5

**TOP ALTITUDE:**  
3000



NOTE: RADAR required.

NOTE: Initial departure headings are predicated on avoiding noise sensitive areas, flight crew awareness and compliance is important in minimizing noise impacts on surrounding communities.

NOTE: Chart not to scale.

(NARRATIVE ON FOLLOWING PAGE)

## COASTAL NINE DEPARTURE

(CSTL9.CCC) 12AUG21

WESTFIELD/SPRINGFIELD, MASSACHUSETTS  
WESTFIELD-BARNES RGNL (BAF)

NE-1, 07 AUG 2025 to 04 SEP 2025

NE-1, 07 AUG 2025 to 04 SEP 2025