

WENDOVER, UTAH

AL-445 (FAA)

25163

VORTAC BVL 112.3 Chan 70	APP CRS 256°	Rwy Ldg 10002 TDZE 4227 Apt Elev 4237
--	------------------------	--

VOR/DME or TACAN RWY 26
WENDOVER (ENV)

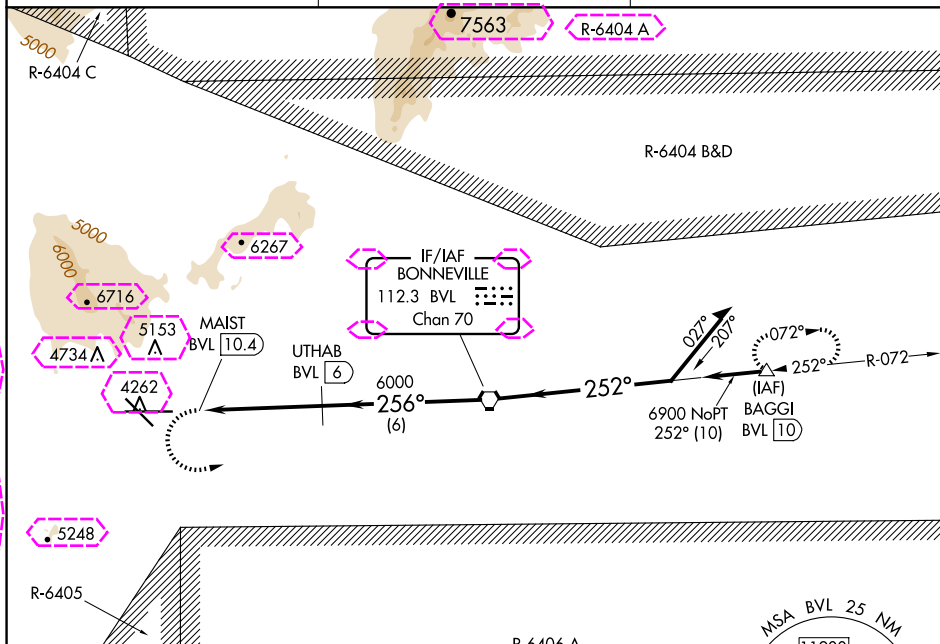
WFNDOVER (ENV)

T
A
❄️ -13°C

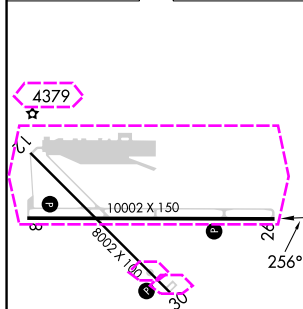
Circling NA north of Rwy 8-26.

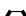
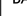


MISSED APPROACH: Climbing left turn to 9000 direct BVL VORTAC and on BVL VORTAC R-072 to BAGGI/10 DME and hold, continue climb-in-hold to 9000.

AWOS-3PT 120.55	SALT LAKE CENTER 128.55 269.175	UNICOM 122.8 (CTAF) 0
---------------------------	---	---------------------------------



ELEV 4237	D	TDZE 4227
-----------	----------	-----------



9000	BVL 	BVL R-072	BAGGI 	BVL VORTAC	Remain within 15 NM
					
CATEGORY	A	B	C	D	E
S-26	4680-1 $\frac{1}{4}$	453 (500-1 $\frac{1}{4}$)	4680-1 $\frac{3}{8}$	453 (500-1 $\frac{3}{8}$)	
 CIRCLING	4680-1 $\frac{1}{4}$ 443 (500-1 $\frac{1}{4}$)	4700-1 $\frac{1}{4}$ 463 (500-1 $\frac{1}{4}$)	4860-1 $\frac{3}{4}$ 623 (700-1 $\frac{3}{4}$)	5080-2 $\frac{3}{4}$ 843 (900-2 $\frac{3}{4}$)	5700-3 1463 (1500-3)

REIL Rwys 8, 12, 26 and 30 **L**
MIRL Rwys 8-26 and 12-30 **L**

WENDOVER, UTAH
Amdt 2 31MAR16

40°43'N-114°02'W

WENDOVER (ENV)

VOR/DME or TACAN RWY 26

VOR/DME or TACAN RWY 26

SW-4, 07 AUG 2025 to 04 SEP 2025