

WENDOVER, UTAH

AL-445 (FAA)

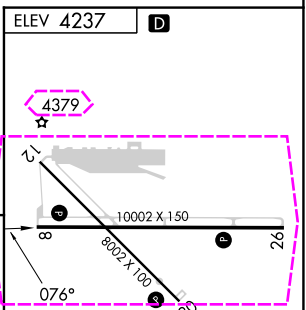
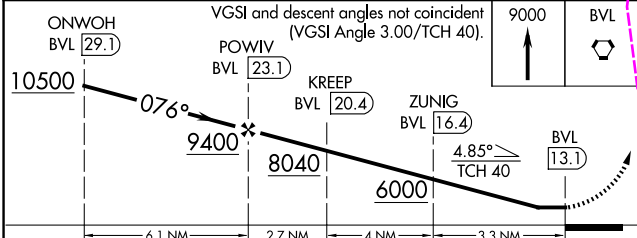
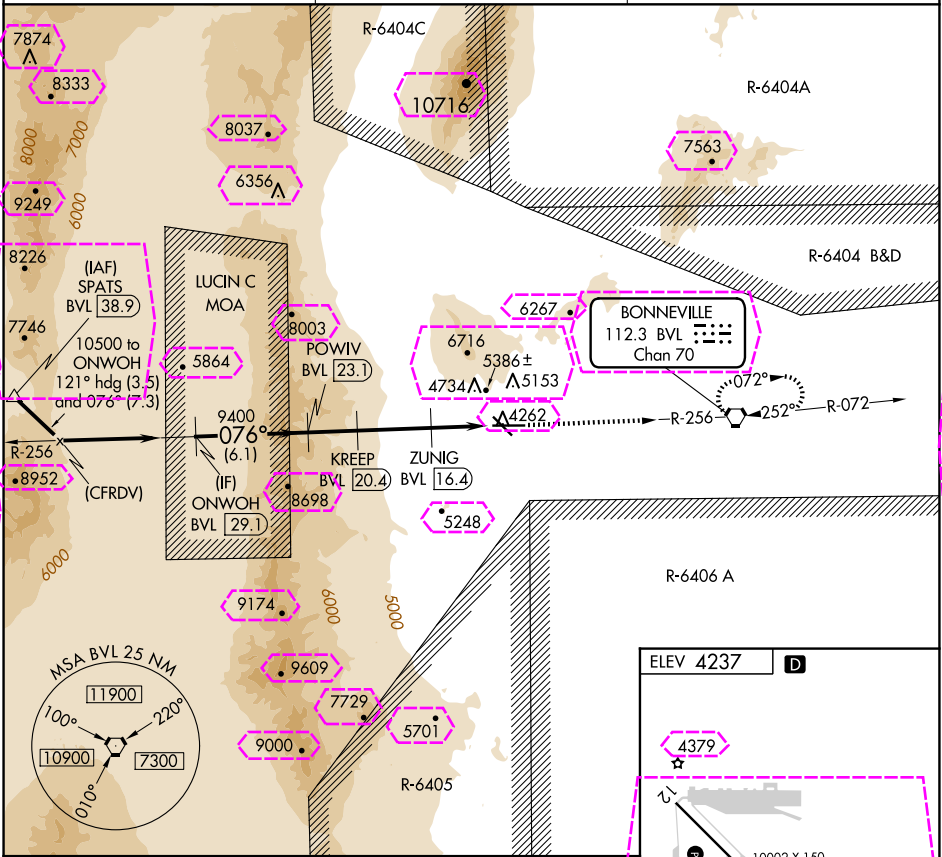
25163

VORTAC BVL <b>112.3</b> Chan <b>70</b>	APP CRS <b>076°</b>	Rwy Ldg TDZE Apt Elev <b>N/A</b> <b>N/A</b> <b>4237</b>
--	------------------------	--

VOR/DME-B  
WENDOVER (ENV)

**▲** Circling NA north of Rwy 8-26.  
**83-13°C**  
MISSED APPROACH: Climb to 9000 direct BVL VORTAC and hold, continue climb-in-hold to 9000.

AWOS-3PT <b>120.55</b>	SALT LAKE CENTER <b>128.55 269.175</b>	UNICOM <b>122.8 (CTAF)</b>
---------------------------	---	-------------------------------



CATEGORY	A	B	C	D	E
CIRCLING	5500-1¼ 1263 (1300-1¼)	5500-1½ 1263 (1300-1½)	5500-3 1263 (1300-3)	5700-3	1463 (1500-3)

REIL Rwy 8, 12, 26 and 30  
MIRL Rwy 8-26 and 12-30

WENDOVER, UTAH  
Amdt 2 31MAR16

40°43'N-114°02'W

WENDOVER (ENV)  
VOR/DME-B

SW-4, 10 JUL 2025 to 07 AUG 2025

SW-4, 10 JUL 2025 to 07 AUG 2025

WENDOVER, UTAH

AL-445 (FAA)

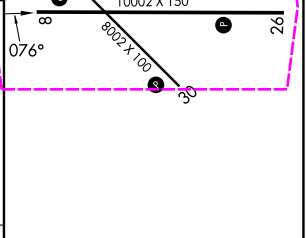
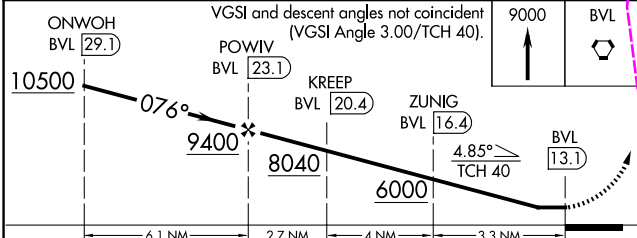
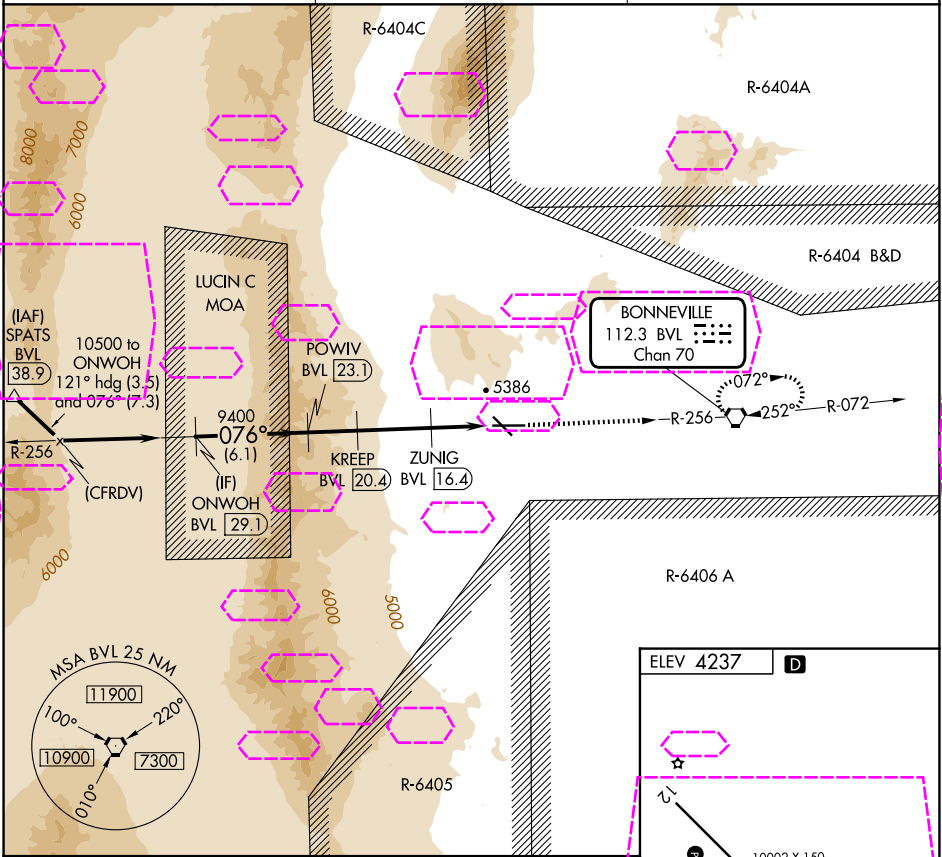
25219

VORTAC BVL	APP CRS	Rwy Ldg	N/A
112.3	076°	TDZE	N/A
Chan 70		Apt Elev	4237

VOR/DME-B  
WENDOVER (ENV)

**A** Circling NA north of Rwy 8-26.  
**B** -12°C  
MISSED APPROACH: Climb to 9000 direct BVL VORTAC and hold, continue climb-in-hold to 9000.

AWOS-3PT 120.55	SALT LAKE CENTER 128.55 269.175	UNICOM 122.8 (CTAF) <b>D</b>
--------------------	------------------------------------	---------------------------------



CATEGORY	A	B	C	D	E
CIRCLING	5500-1¼ 1263 (1300-1¼)	5500-1½ 1263 (1300-1½)	5500-3 1263 (1300-3)	5700-3	1463 (1500-3)

REIL Rwy 8, 12, 26 and 30 **D**  
MIRL Rwy 8-26 and 12-30 **D**

WENDOVER, UTAH  
Amdt 2 31MAR16

40°43'N-114°02'W

WENDOVER (ENV)  
VOR/DME-B

SW-4, 07 AUG 2025 to 04 SEP 2025

SW-4, 07 AUG 2025 to 04 SEP 2025