

WENDOVER, UTAH

AL-445 (FAA)

25163

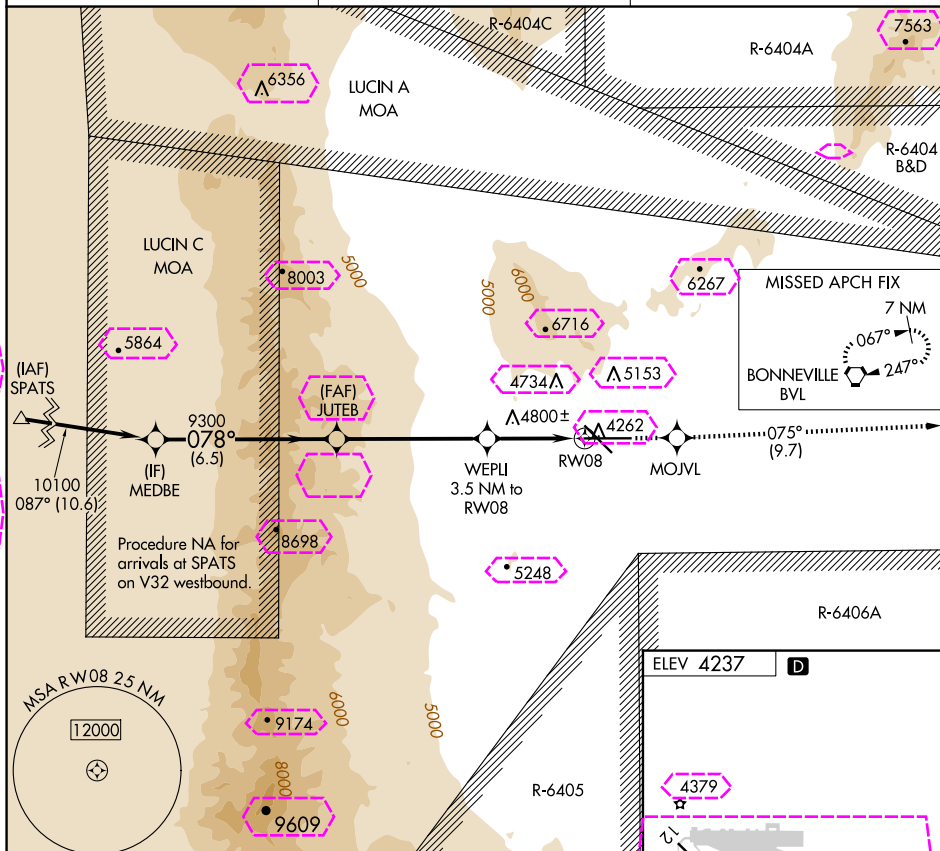
APP CRS 078°	Rwy Ldg TDZE Apt Elev N/A N/A 4237
------------------------	------------------------------------------------------------------------

RNAV (GPS)-C

WENDOVER (ENV)

	Circling NA north of Rwy 8-26. DME/DME RNP-0.3 NA.	MISSED APPROACH: Climb to 9000 direct MOJVL and on track 075° to BVL VORTAC and hold, continue climb-in-hold to 9000.
--	-------------------------------------------------------	-----------------------------------------------------------------------------------------------------------------------

AWOS-3PT 120.55	SALT LAKE CENTER 128.55 269.175	UNICOM 122.8 (CTAF)
---------------------------	-------------------------------------------	-------------------------------



MEDBE		JUTEB		9000 MOJVL tr 075° BVL	
10100		9300		WEPLI 3.5 NM to RW08	
078°		078°		8.11° TCH 40	
6.5 NM		5.4 NM		3.5 NM	
CATEGORY	A	B	C	D	E
CIRCLING	6020-1¼ 1783 (1800-1¼)	6020-1½ 1783 (1800-1½)	6020-3	1783 (1800-3)	

 WENDOVER, UTAH
 Amdt 1 13NOV14

40°43'N-114°02'W

 WENDOVER (ENV)
 RNAV (GPS)-C

SW-4, 10 JUL 2025 to 07 AUG 2025

SW-4, 10 JUL 2025 to 07 AUG 2025

WENDOVER, UTAH

AL-445 (FAA)

25219

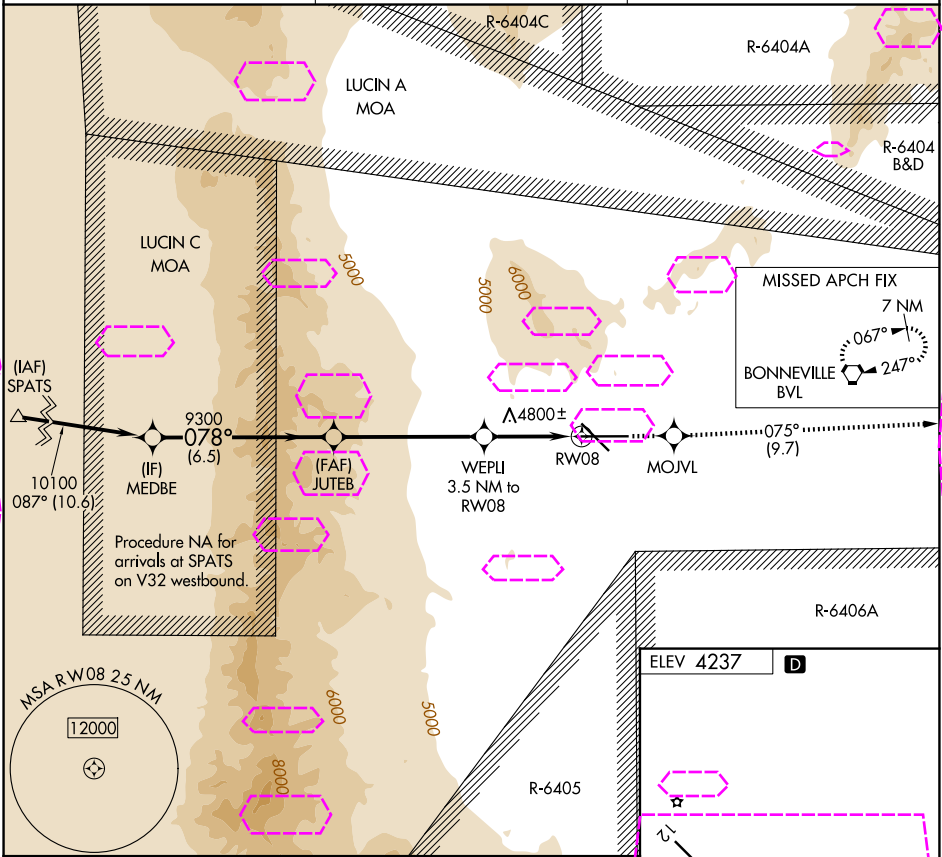
APP CRS 078°	Rwy Ldg TDZE Apt Elev N/A N/A 4237
------------------------	------------------------------------------------------------------------

RNAV (GPS)-C

WENDOVER (ENV)

⚠ Circling NA north of Rwy 8-26. DME/DME RNP-0.3 NA. **⚠** MISSED APPROACH: Climb to 9000 direct MOJVL and on track 075° to BVL VORTAC and hold, continue climb-in-hold to 9000.

AWOS-3PT 120.55	SALT LAKE CENTER 128.55 269.175	UNICOM 122.8 (CTAF)
---------------------------	-------------------------------------------	-------------------------------



MEDBE			JUTEB			9000 ↑		MOJVL ✦		ir 075°		BVL ⬡	
10100			9300			WEPLI 3.5 NM to RW08		8.11° TCH 40		RW08			
078°			078°			3.5 NM		3.5 NM		3.5 NM			
6.5 NM			5.4 NM			3.5 NM							
CATEGORY	A		B		C		D		E				
CIRCLING	6020-1¼		6020-1½		6020-3		1783 (1800-3)						
	1783 (1800-1¼)		1783 (1800-1½)										

10002 X 1.50

8002 X 100

078°

8 26 30

REIL Rwy 8, 12, 26 and 30

MIRL Rwy 8-26 and 12-30