

WENDOVER, UTAH


AL-445 (FAA)

25163

APP CRS	Rwy Ldg	10002
258°	TDZE	4228
	Apt Elev	4237

# RNAV (GPS) RWY 26

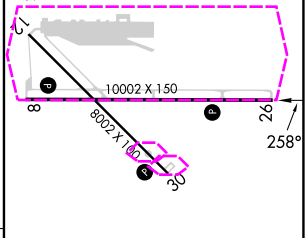
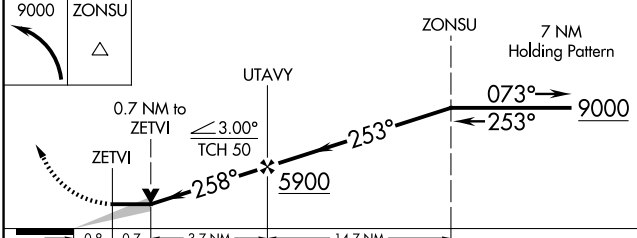
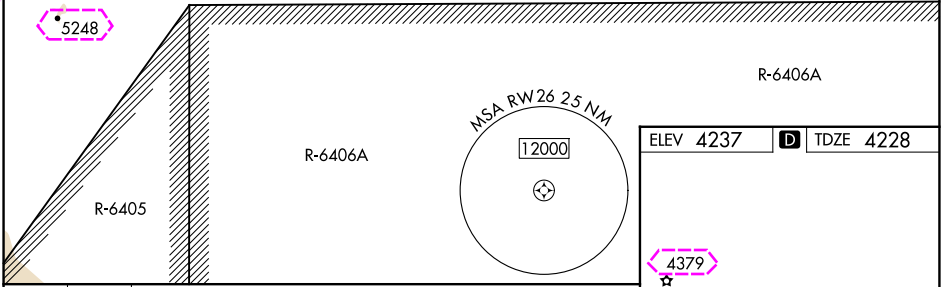
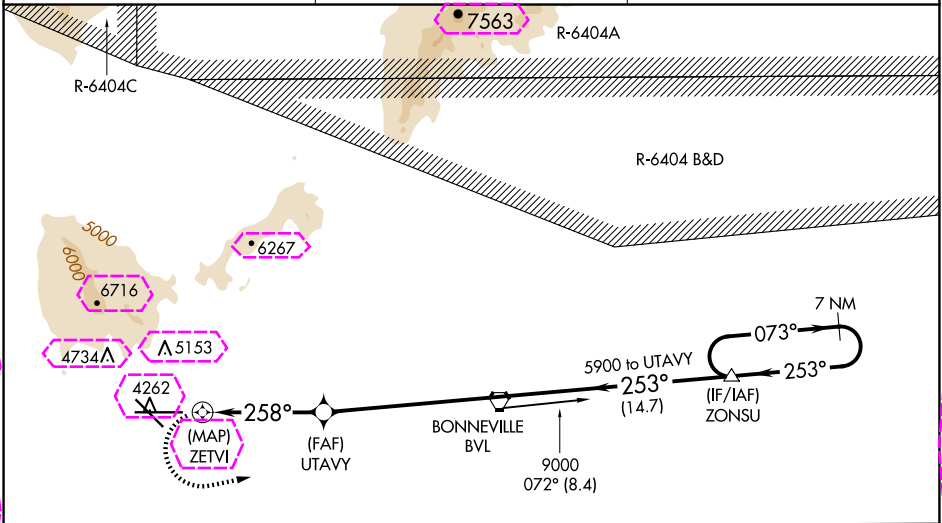
WENDOVER (ENV)


**NA**  
 **-13°**




Circling NA north of Rwy 8-26.  
DME/DME RNP-0.3 NA.

MISSED APPROACH: Climbing left turn to 9000 direct ZONSU and hold, continue climb-in-hold to 9000.

AWOS-3PT <b>120.55</b>	SALT LAKE CENTER <b>128.55 269.175</b>	UNICOM <b>122.8 (CTAF)</b> 
---------------------------	---	---



CATEGORY	A	B	C	D	E
LNAV MDA	4740-1 512 (600-1)	4740-1 512 (600-1)	4740-1 512 (600-1)	4740-1 512 (600-1)	4740-1 512 (600-1)
 CIRCLING	4740-1 512 (600-1)	4740-1 512 (600-1)	4740-1 512 (600-1)	4740-1 512 (600-1)	4740-1 512 (600-1)

ELEV 4237	 TDZE 4228
REIL Rwy 8, 12, 26 and 30 	
MIRL Rwy 8-26 and 12-30 	

SW-4, 10 JUL 2025 to 07 AUG 2025

SW-4, 10 JUL 2025 to 07 AUG 2025

WENDOVER, UTAH

Amdt 1A 02JAN20

40°43'N-114°02'W

WENDOVER (ENV)

# RNAV (GPS) RWY 26

WENDOVER, UTAH

AL-445 (FAA)

25219

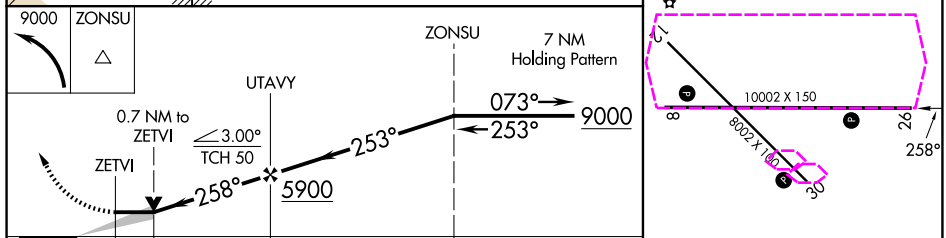
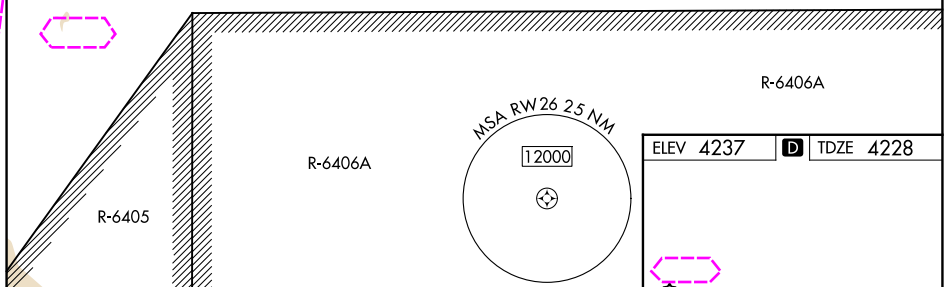
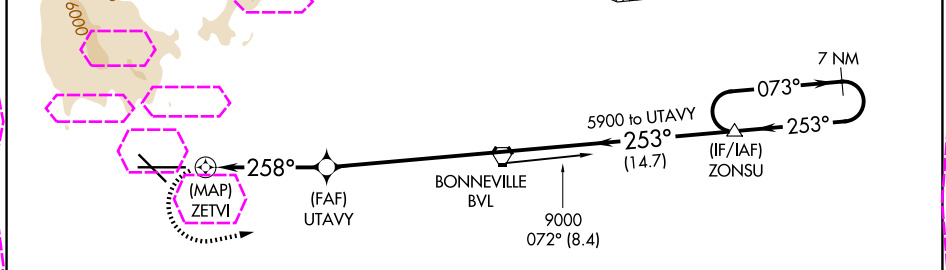
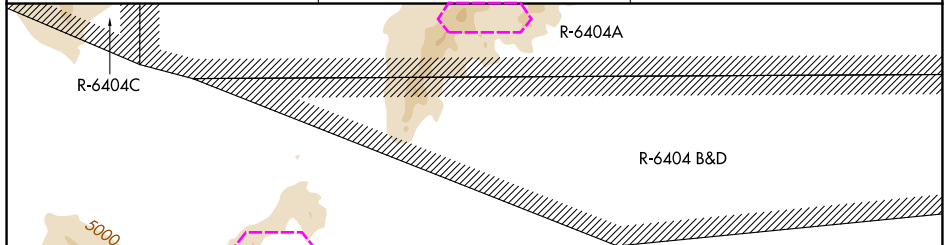
APP CRS	Rwy Ldg	<b>10002</b>
<b>258°</b>	TDZE	<b>4228</b>
	Apt Elev	<b>4237</b>

# RNAV (GPS) RWY 26

WENDOVER (ENV)

NA 12°C	Circling NA north of Rwy 8-26. DME/DME RNP-0.3 NA.	MISSED APPROACH: Climbing left turn to 9000 direct ZONSU and hold, continue climb-in-hold to 9000.
------------	---	--

AWOS-3PT <b>120.55</b>	SALT LAKE CENTER <b>128.55 269.175</b>	UNICOM <b>122.8 (CTAF)</b>
---------------------------	---	-------------------------------



CATEGORY	A	B	C	D	E
LNNAV MDA	4740-1	512 (600-1)	4740-1 $\frac{3}{8}$	512 (600-1 $\frac{3}{8}$ )	
CIRCLING	4740-1 $\frac{1}{4}$	503 (600-1 $\frac{1}{4}$ )	4860-1 $\frac{3}{4}$ 623 (700-1 $\frac{3}{4}$ )	5080-2 $\frac{3}{4}$ 843 (900-2 $\frac{3}{4}$ )	5700-3 1463 (1500-3)

REIL Rwy 8, 12, 26 and 30

MIRL Rwy 8-26 and 12-30

WENDOVER, UTAH

Amdt 1A 02JAN20

40°43'N-114°02'W

WENDOVER (ENV)

# RNAV (GPS) RWY 26

SW-4, 07 AUG 2025 to 04 SEP 2025

SW-4, 07 AUG 2025 to 04 SEP 2025