

WALNUT RIDGE, ARKANSAS

AL-441 (FAA)

23334

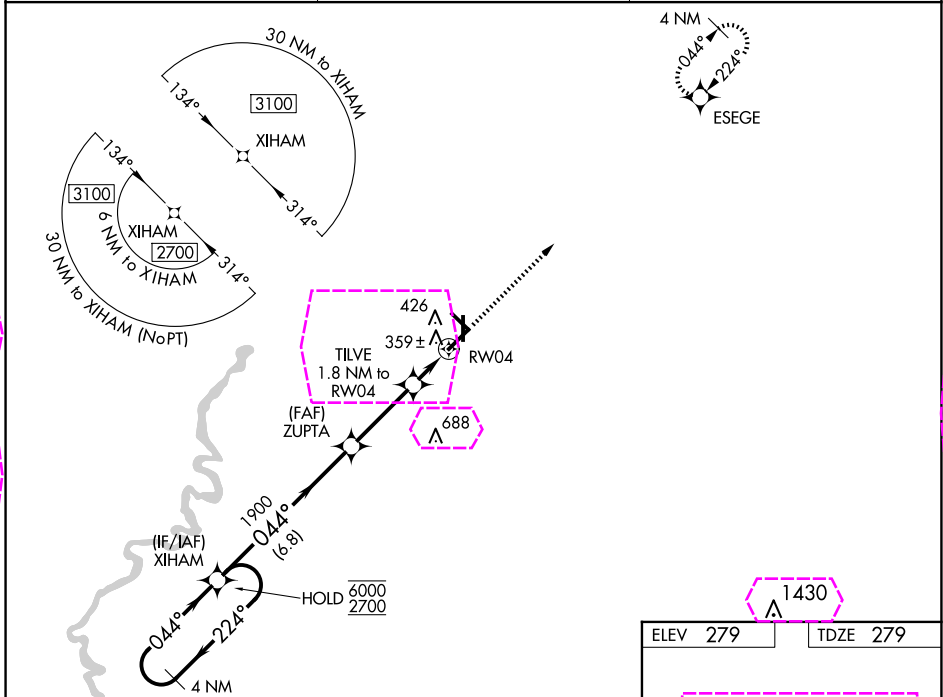
WAAS CH 77825 W04A	APP CRS 044°	Rwy Idg TDZE Apt Elev	6001 279 279
--	------------------------	-----------------------------	---

RNAV (GPS) RWY 4

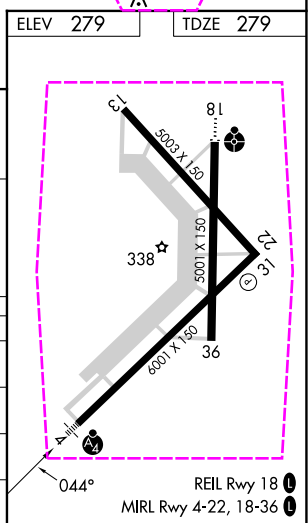
WALNUT RIDGE RGNL (ARG)

RNP APCH - GPS.	MALSF	MISSED APPROACH: Climb to 2700 direct ESEGE and hold.
<p>▼ ▲ For uncompensated Baro-VNAV systems, LNAV/VNAV NA below -15°C or above 54°C. For inop ALS, increase LNAV Cat C/D visibility to 1½ SM. Inop table does not apply to LPV and LNAV/VNAV all Cats.</p>		

AWOS-3PT 126.525	MEMPHIS CENTER 120.075 289.4	UNICOM 122.8 (CTAF) 0
----------------------------	--	---------------------------------



4 NM Holding Pattern		XIHAM	ZUPTA	TILVE	2700	ESEGE
6000 2700		← 224°	044° →	044°	1900	900
GP 3.00° TCH 45						
		6.8 NM	3.1 NM	0.9 NM	0.9 NM	
CATEGORY		A	B	C	D	
LPV DA			529-¾	250 (300-¾)		
LNAV/VNAV DA			529-¾	250 (300-¾)		
LNAV MDA			620-¾	341 (400-¾)		
CIRCLING		840-1	561 (600-1)	840-1½ 561 (600-1½)	1000-2¼ 721 (800-2¼)	



WALNUT RIDGE, ARKANSAS
Orig-C 03NOV22

36°07'N-90°56' W

WALNUT RIDGE RGNL (ARG)
RNAV (GPS) RWY 4

SC-1, 10 JUL 2025 to 07 AUG 2025

SC-1, 10 JUL 2025 to 07 AUG 2025

WALNUT RIDGE, ARKANSAS

AL-441 (FAA)

25219

WAAS CH 77825 W04A	APP CRS 044°	Rwy Ldg TDZE Apt Elev	6001 279 279
--	------------------------	-----------------------------	---

RNAV (GPS) RWY 4

WALNUT RIDGE RGNL (ARG)

RNP APCH - GPS.

▼

▲

For uncompensated Baro-VNAV systems, LNAV/VNAV NA below -1.5°C or above 54°C. For inop ALS, increase LNAV Cat C/D visibility to 1½ SM. Inop table does not apply to LPV and LNAV/VNAV all Cats.

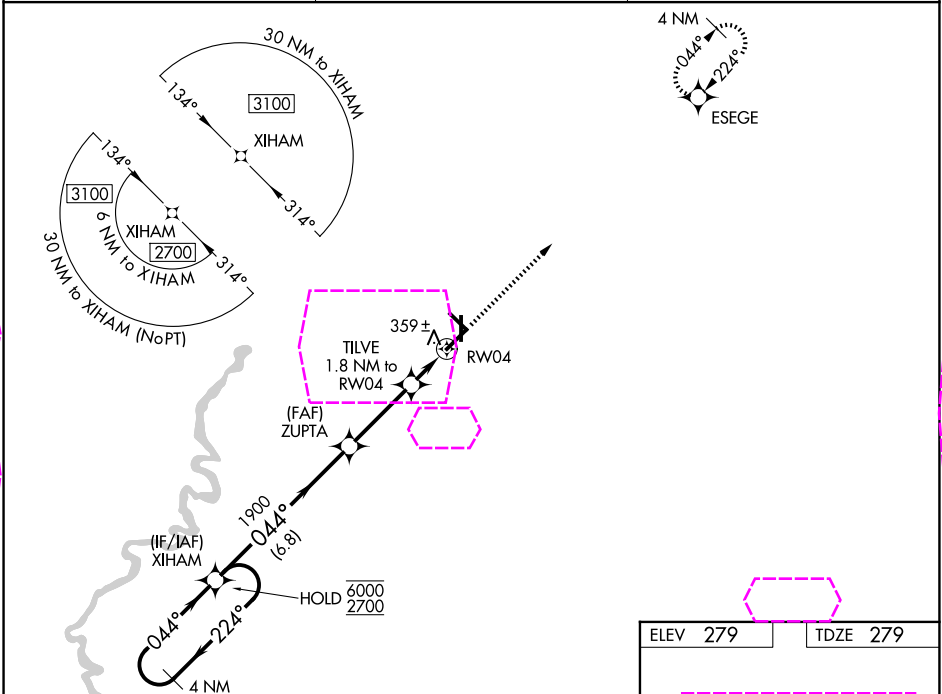
MALSF

●

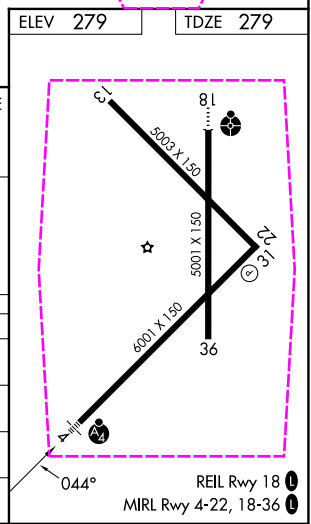
≡

MISSED APPROACH: Climb to 2700 direct ESEGE and hold.

AWOS-3PT 126.525	MEMPHIS CENTER 120.075 289.4	UNICOM 122.8 (CTAF) 0
----------------------------	--	---------------------------------



4 NM Holding Pattern		XIHAM		ZUPTA		TILVE		2700 ESEGE	
6000 ← 224°		2700 → 044°		1900		1.8 NM to RW04		0.9 NM to RW04	
GP 3.00°		TCH 45		1900		900		RW04	
				6.8 NM		3.1 NM		0.9 NM	
CATEGORY		A		B		C		D	
LPV DA				529-¾		250 (300-¾)			
LNAV/VNAV DA				529-¾		250 (300-¾)			
LNAV MDA				620-¾		341 (400-¾)			
CIRCLING		840-1		561 (600-1)		840-1½		1000-2¼	
						561 (600-1½)		721 (800-2¼)	



WALNUT RIDGE, ARKANSAS
Orig-C 03NOV22

36°07'N-90°56' W

WALNUT RIDGE RGNL (ARG)
RNAV (GPS) RWY 4

SC-1, 07 AUG 2025 to 04 SEP 2025

SC-1, 07 AUG 2025 to 04 SEP 2025