

WALNUT RIDGE, ARKANSAS

AL-441 (FAA)

23334

WAAS CH <b>45825</b> <b>W36A</b>	APP CRS <b>359°</b>	Rwy Idg <b>5001</b> TDZE <b>274</b> Apt Elev <b>279</b>
--	------------------------	---

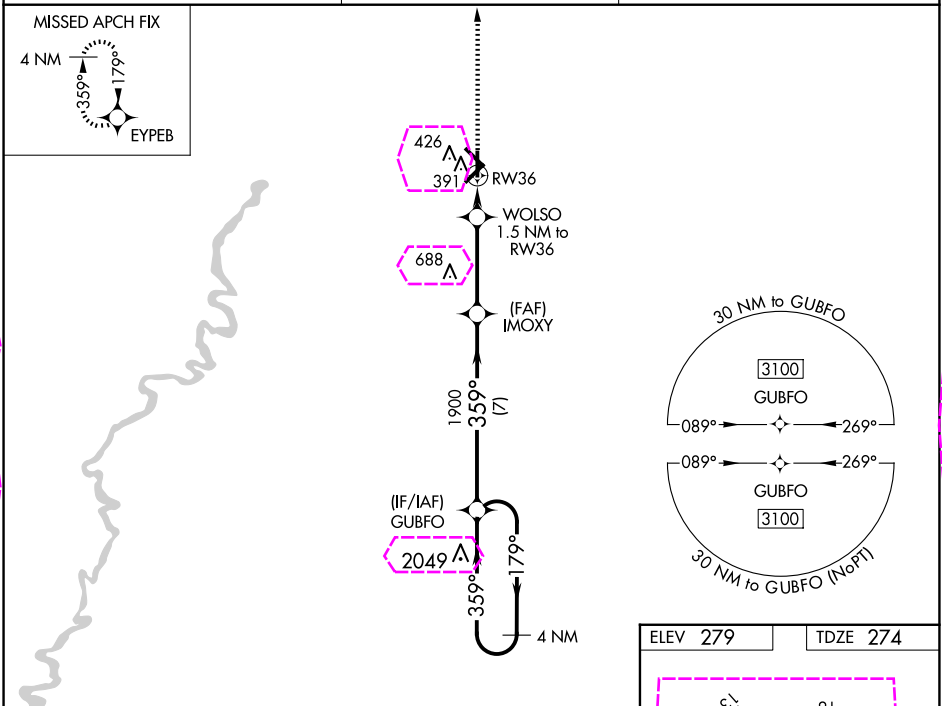
RNAV (GPS) RWY 36

WALNUT RIDGE RGNL (ARG)

**Baro-VNAV NA** when using Jonesboro altimeter setting. For uncompensated Baro-VNAV systems, LNAV/VNAV NA below -15°C (5°F) or above 42°C (107°F). DME/DME RNP-0.3 NA. When local altimeter setting not received, use Jonesboro altimeter setting and increase LPV DA to 528 feet, LNAV/VNAV DA to 628 feet, and all MDAs 60 feet; increase LNAV Cats C/D and Circling Cat D visibility ¼ SM.

MISSED APPROACH:  
Climb to 2700 direct  
EYPEB and hold.

AWOS-3PT <b>126.525</b>	MEMPHIS CENTER <b>120.075 289.4</b>	UNICOM <b>122.8 (CTAF) 0</b>
----------------------------	--	---------------------------------



2700

↑

EYPEB

✧

\*LNAV only.

WOLSO

1.5 NM to RW36

IMOXY

1900

GUBFO

4 NM Holding Pattern

179°

←359°

3100

780\*

359°

1900

GP 3.00°

TCH 45

1.5 NM

3.5 NM

7 NM

CATEGORY

A

B

C

D

LPV DA

474-1

200 (200-1)

LNAV/VNAV DA

574-1

300 (300-1)

LNAV MDA

660-1

386 (400-1)

660-1 ½

386 (400-1 ½)

CIRCLING

760-1

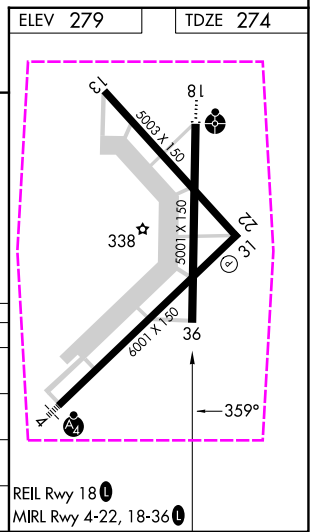
481 (500-1)

800-1 ½

521 (600-1 ½)

1000-2 ¼

721 (800-2 ¼)



WALNUT RIDGE, ARKANSAS  
Amdt 1B 20MAY21

36°07'N-90°56'W

WALNUT RIDGE RGNL (ARG)

RNAV (GPS) RWY 36

WALNUT RIDGE, ARKANSAS

AL-441 (FAA)

25219

WAAS CH <b>45825</b> <b>W36A</b>	APP CRS <b>359°</b>	Rwy Ldg TDZE <b>274</b> Apt Elev <b>279</b>
--	------------------------	---

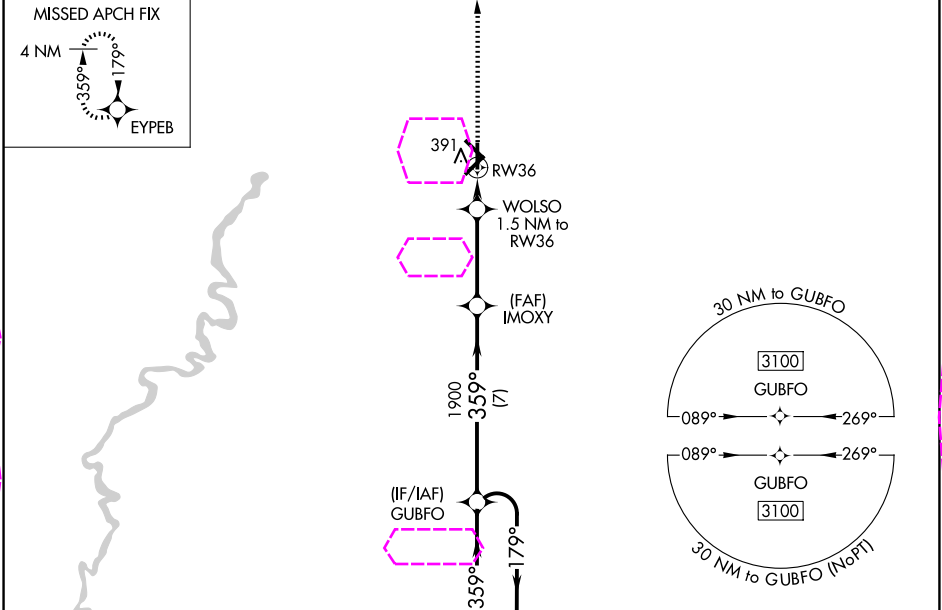
# RNAV (GPS) RWY 36

WALNUT RIDGE RGNL (ARG)

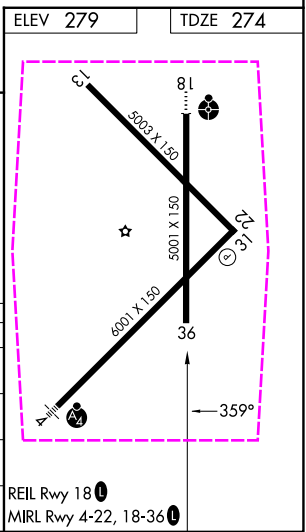
**Baro-VNAV NA** when using Jonesboro altimeter setting. For uncompensated Baro-VNAV systems, LNAV/VNAV NA below -15°C (5°F) or above 42°C (107°F). DME/DME RNP-0.3 NA. When local altimeter setting not received, use Jonesboro altimeter setting and increase LPV DA to 528 feet, LNAV/VNAV DA to 628 feet, and all MDAs 60 feet; increase LNAV Cats C/D and Circling Cat D visibility ¼ SM.

**MISSED APPROACH:**  
Climb to 2700 direct EYPEB and hold.

AWOS-3PT <b>126.525</b>	MEMPHIS CENTER <b>120.075 289.4</b>	UNICOM <b>122.8</b> (CTAF) <b>0</b>
----------------------------	--	--



ELEV 2700	EYPEB				
*LNAV only.	WOLSO 1.5 NM to RW36	IMOXY 1900	GUBFO	4 NM Holding Pattern	
RW36	780*	1900	3100	179°	359°
1.5 NM	3.5 NM	7 NM			
CATEGORY	A	B	C	D	
LPV DA	474-1		200 (200-1)		
LNAV/VNAV DA	574-1		300 (300-1)		
LNAV MDA	660-1	386 (400-1)	660-1 ½	386 (400-1 ½)	
CIRCLING	760-1	481 (500-1)	800-1 ½	1000-2 ¼	721 (800-2 ¼)



WALNUT RIDGE, ARKANSAS  
Amdt 1B 20MAY21

36°07'N-90°56'W

# RNAV (GPS) RWY 36

WALNUT RIDGE RGNL (ARG)

SC-1, 07 AUG 2025 to 04 SEP 2025

SC-1, 07 AUG 2025 to 04 SEP 2025