

WALNUT RIDGE, ARKANSAS

AL-441 (FAA)

23334

WAAS CH <b>82125</b> <b>W22A</b>	APP CRS <b>224°</b>	Rwy Idg <b>6001</b> TDZE <b>274</b> Apt Elev <b>279</b>
--	------------------------	---

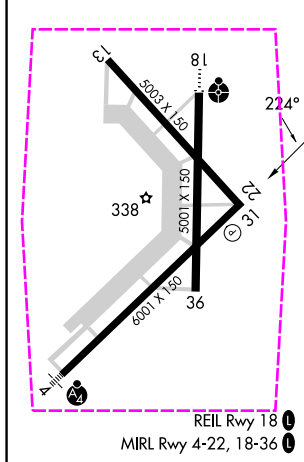
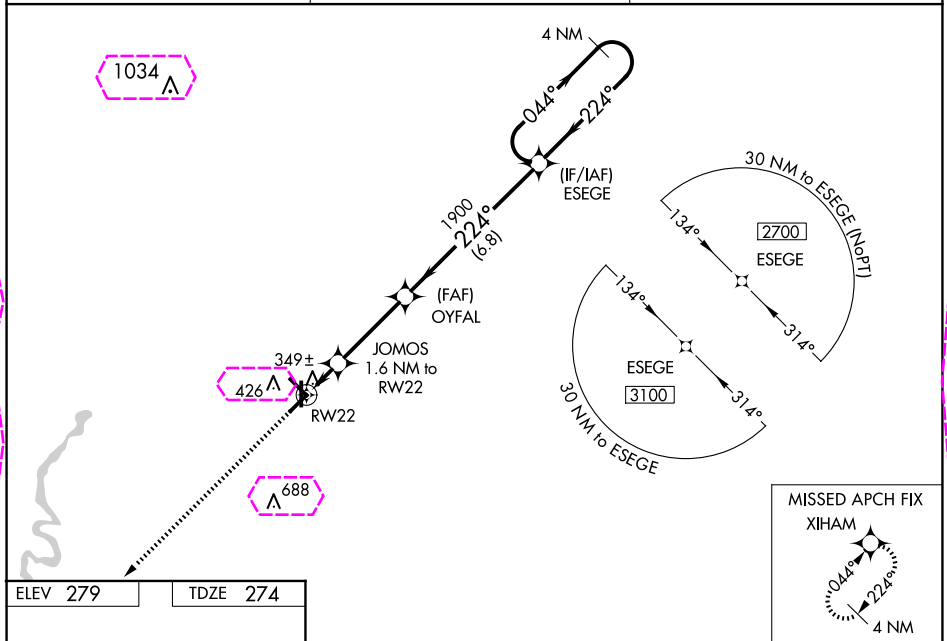
# RNAV (GPS) RWY 22

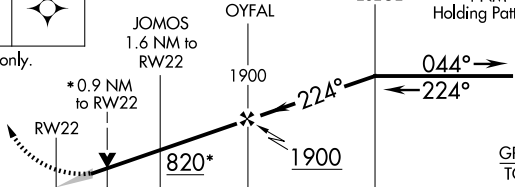
WALNUT RIDGE RGNL (ARG)

**⚠** Baro-VNAV NA when using Jonesboro altimeter setting. For uncompensated Baro-VNAV systems, LNAV/VNAV NA below -15°C (5°F) or above 42°C (107°F). DME/DME RNP-0.3 NA. VDP NA with Jonesboro altimeter setting. When local altimeter setting not received, use Jonesboro altimeter setting and increase LPV and LNAV/VNAV DA to 578 feet, and all MDAs 60 feet; increase LNAV Cats C/D visibility ½ SM and Circling Cat D visibility ¼ SM.

**MISSED APPROACH:**  
Climb to 2700 direct XIHAM and hold.

AWOS-3PT <b>126.525</b>	MEMPHIS CENTER <b>120.075 289.4</b>	UNICOM <b>122.8 (CTAF) 0</b>
----------------------------	--	---------------------------------



2700 ↑ XIHAM					
*LNAV only.					
					
CATEGORY	A	B	C	D	
LPV DA	524-1 250 (300-1)				
LNAV/VNAV DA	524-1 250 (300-1)				
LNAV MDA	600-1 326 (400-1)				
CIRCLING	760-1 481 (500-1)		800-1½ 521 (600-1½)	1000-2¼ 721 (800-2¼)	

WALNUT RIDGE, ARKANSAS  
Amdt 1B 20MAY21

36°07'N-90°56'W

# WALNUT RIDGE RGNL (ARG)

## RNAV (GPS) RWY 22

WALNUT RIDGE, ARKANSAS

AL-441 (FAA)

25219

WAAS CH <b>82125</b> <b>W22A</b>	APP CRS <b>224°</b>	Rwy Ldg <b>6001</b> TDZE <b>274</b> Apt Elev <b>279</b>
--	------------------------	---

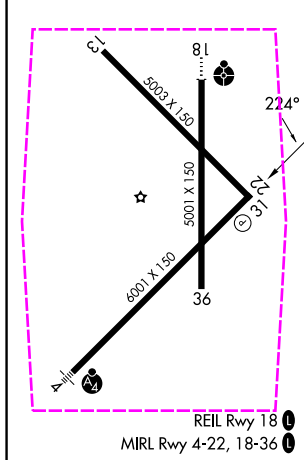
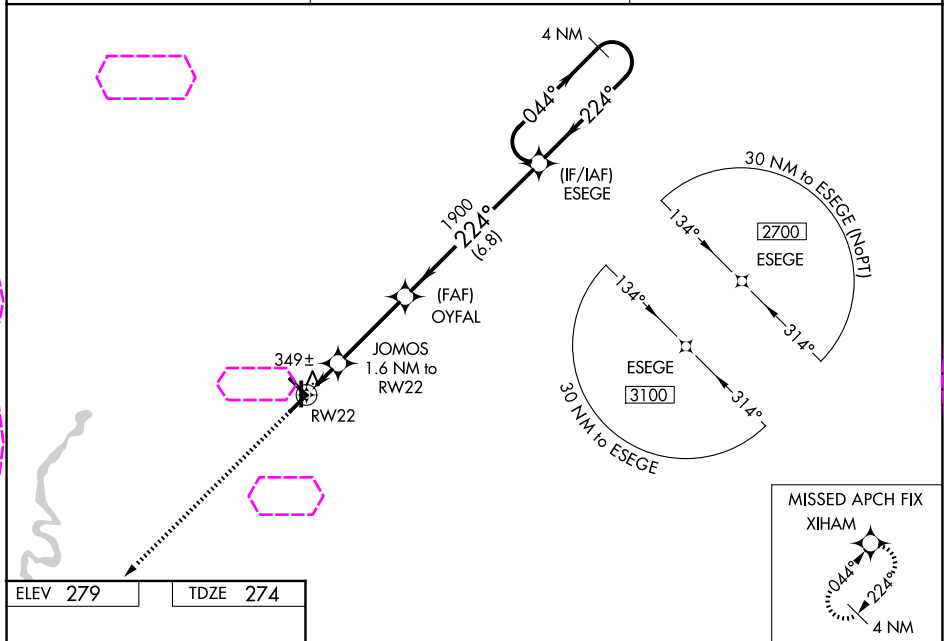
# RNAV (GPS) RWY 22

WALNUT RIDGE RGNL (ARG)

**⚠** Baro-VNAV NA when using Jonesboro altimeter setting. For uncompensated Baro-VNAV systems, LNAV/VNAV NA below -15°C (5°F) or above 42°C (107°F). DME/DME RNP-0.3 NA. VDP NA with Jonesboro altimeter setting. When local altimeter setting not received, use Jonesboro altimeter setting and increase LPV and LNAV/VNAV DA to 578 feet, and all MDAs 60 feet; increase LNAV Cats C/D visibility ½ SM and Circling Cat D visibility ¼ SM.

**MISSED APPROACH:**  
Climb to 2700 direct XIHAM and hold.

AWOS-3PT <b>126.525</b>	MEMPHIS CENTER <b>120.075 289.4</b>	UNICOM <b>122.8 (CTAF) 0</b>
----------------------------	--	---------------------------------



<b>2700 XIHAM</b>	<b>JOMOS 1.6 NM to RW22</b>	<b>OYFAL 1900</b>	<b>ESEGE 1900</b>	<b>2700</b>
<b>*LNAV only.</b>	<b>*0.9 NM to RW22</b>	<b>820*</b>	<b>1900</b>	<b>044°</b> <b>224°</b>
<b>0.9 NM</b>	<b>0.7 NM</b>	<b>3.4 NM</b>	<b>6.8 NM</b>	<b>GP 3.00°</b> <b>TCH 45</b>
CATEGORY	A	B	C	D
LPV DA	524-1 250 (300-1)			
LNAV/VNAV DA	524-1 250 (300-1)			
LNAV MDA	600-1 326 (400-1)			
CIRCLING	760-1 481 (500-1)		800-1½ 521 (600-1½)	1000-2¼ 721 (800-2¼)

WALNUT RIDGE, ARKANSAS  
Amdt 1B 20MAY21

36°07'N-90°56'W

WALNUT RIDGE RGNL (ARG)  
RNAV (GPS) RWY 22

SC-1, 07 AUG 2025 to 04 SEP 2025

SC-1, 07 AUG 2025 to 04 SEP 2025