

WALNUT RIDGE, ARKANSAS

AL-441 (FAA)

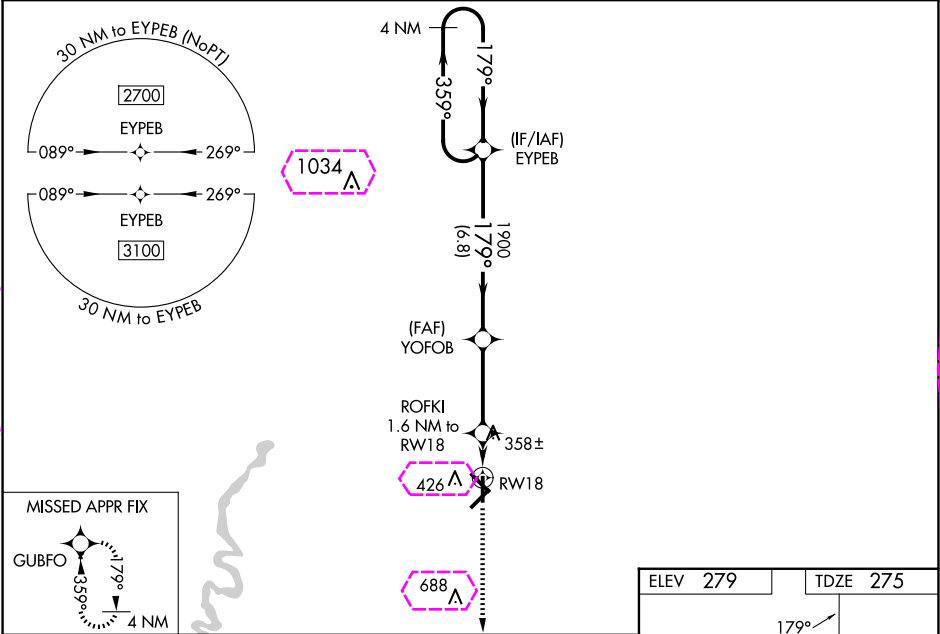
23334

WAAS CH 65925 W18A	APP CRS 179°	Rwy Idg 5001 TDZE 275 Apt Elev 279
--	------------------------	---

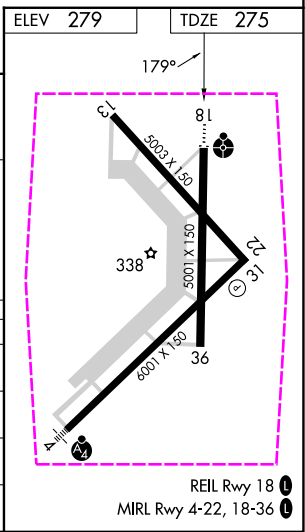
RNAV (GPS) RWY 18
WALNUT RIDGE RGNL (ARG)

<p>V For uncompensated Baro-VNAV systems, LNAV/VNAV NA below -15°C (5°F) or above 42°C (107°F). DME/DME RNP-0.3 NA. When local altimeter setting not received, use Jonesboro altimeter setting and increase LPV DA to 529 feet, LNAV/VNAV DA to 579 feet, and all MDAs 60 feet; increase Circling Cat D visibility ¼ SM. For inoperative ODALS, increase LPV all Cats and LNAV/VNAV all Cats visibility to ¾ mile and LNAV Cat C and D visibility to 1 mile. Baro-VNAV and VDP NA with Jonesboro altimeter setting.</p>	ODALS 	MISSED APPROACH: Climb to 3100 direct GUBFO and hold.
--	-----------	--

AWOS-3PT 126.525	MEMPHIS CENTER 120.075 289.4	UNICOM 122.8 (CTAF)
----------------------------	--	-------------------------------



4 NM Holding Pattern	EYEBC	YOFOB	ROFKI 1.6 NM to RW18	3100	GUBFO
2700	359°	179°	1900	179°	
GP 3.00° TCH 45		1900	*820		
		6.8 NM	3.4 NM	0.6 NM	1 NM
CATEGORY	A	B	C	D	
LPV DA		475-¾	200 (200-¾)		
LNAV/VNAV DA		525-¾	250 (300-¾)		
LNAV MDA	620-¾	345 (400-¾)	620-7/8	345 (400-7/8)	
CIRCLING	760-1	481 (500-1)	800-1½ 521 (600-1½)	1000-2¼ 721 (800-2¼)	



WALNUT RIDGE, ARKANSAS
Amdt 1B 20MAY21

36°07'N-90°56'W

WALNUT RIDGE RGNL (ARG)
RNAV (GPS) RWY 18

WALNUT RIDGE, ARKANSAS

AL-441 (FAA)

25219

WAAS CH 65925 W18A	APP CRS 179°	Rwy Ldg 5001 TDZE 275 Apt Elev 279
--	------------------------	---

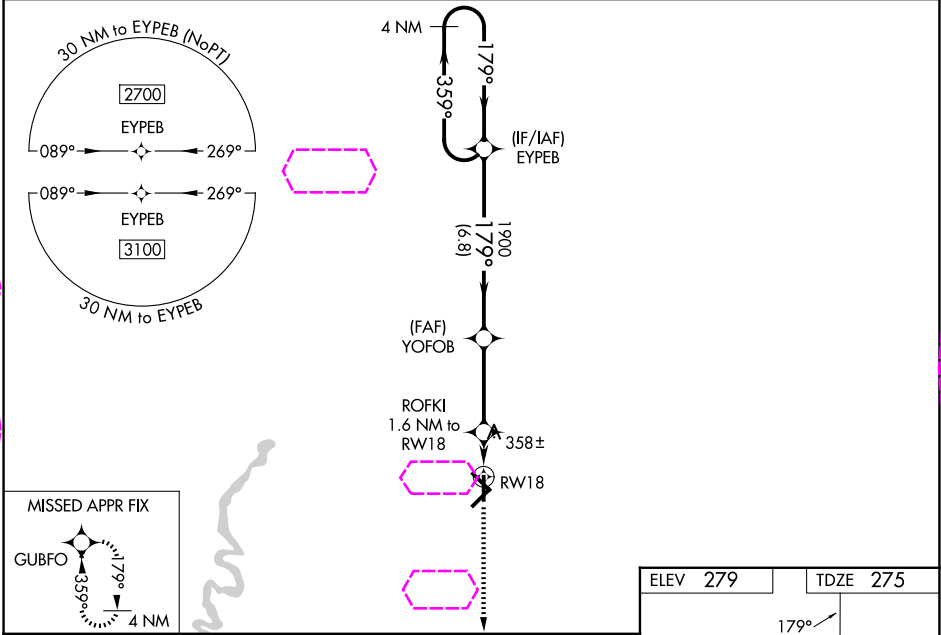
RNAV (GPS) RWY 18
WALNUT RIDGE RGNL (ARG)

V For uncompensated Baro-VNAV systems, LNAV/VNAV NA below -15°C (5°F) or above 42°C (107°F). DME/DME RNP-0.3 NA. When local altimeter setting not received, use Jonesboro altimeter setting and increase LPV DA to 529 feet, LNAV/VNAV DA to 579 feet, and all MDAs 60 feet; increase Circling Cat D visibility ¼ SM. For inoperative ODALS, increase LPV all Cats and LNAV/VNAV all Cats visibility to ¾ mile and LNAV Cat C and D visibility to 1 mile. Baro-VNAV and VDP NA with Jonesboro altimeter setting.

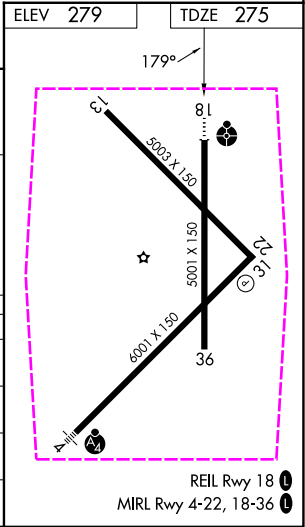
ODALS

MISSED APPROACH:
Climb to 3100 direct GUBFO and hold.

AWOS-3PT 126.525	MEMPHIS CENTER 120.075 289.4	UNICOM 122.8 (CTAF)
----------------------------	--	-------------------------------



4 NM Holding Pattern		EYPEB	YOFOB	ROFKI 1.6 NM to RW18	3100 ↑	GUBFO ✱
2700	←359° 179°→		1900	*1 NM to RW18	*LNAV only.	
GP 3.00° TCH 45			1900	*820	↓	RW18
		6.8 NM	3.4 NM	0.6 NM	1 NM	
CATEGORY	A	B	C	D		
LPV DA	475-¾		200 (200-¾)			
LNAV/VNAV DA	525-¾		250 (300-¾)			
LNAV MDA	620-¾	345 (400-¾)	620-7/8	345 (400-7/8)		
CIRCLING	760-1	481 (500-1)	800-1½ 521 (600-1½)	1000-2¼ 721 (800-2¼)		



WALNUT RIDGE, ARKANSAS
Amdt 1B 20MAY21

36°07'N-90°56'W

WALNUT RIDGE RGNL (ARG)
RNAV (GPS) RWY 18