

WALNUT RIDGE RGNL (ARG)  
LOC RWY 18

WALNUT RIDGE, ARKANSAS

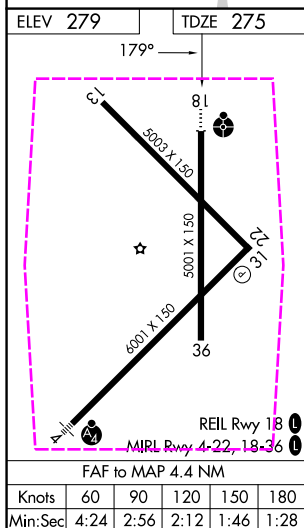
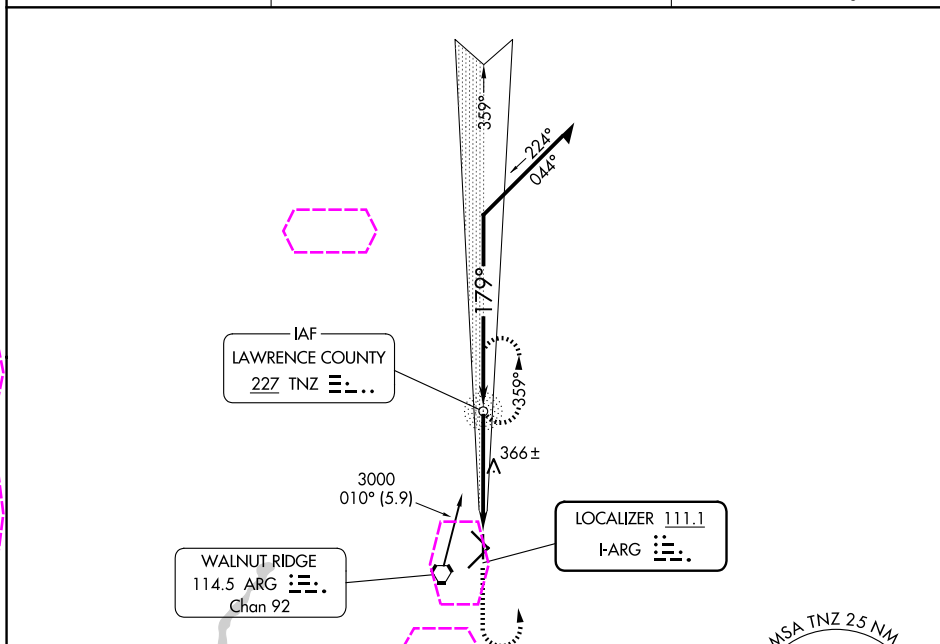
AL-441 (FAA)

25219

LOC I-ARG <b>111.1</b>	APP CRS <b>179°</b>	Rwy Ldg <b>5001</b>
		TDZE <b>275</b>
		Apt Elev <b>279</b>

**LOC RWY 18**  
WALNUT RIDGE RGNL (ARG)

ADF required. ▼ ▲ NA Inop table does not apply to S-18 Cat D.		ODALS ● : : : ● : : : ● : : :	MISSED APPROACH: Climb to 900 then climbing left turn to 1700 direct TNZ NDB and hold.
AWOS-3PT <b>126.525</b>	MEMPHIS CENTER <b>120.075 289.4</b>	UNICOM <b>122.8 (CTAF) 0</b>	



900		1700	TNZ	TNZ NDB	Remain within 10 NM
359°		179°	3000	1700	
≤ 2.98°		TCH 45	4.4 NM		
CATEGORY	A	B	C	D	
S-18	620-3/4	345 (400-3/4)	620-7/8 345 (400-7/8)	620-1 1/4 345 (400-1 1/4)	
CIRCLING	760-1	481 (500-1)	800-1 1/2 521 (600-1 1/2)	1000-2 1/4 721 (800-2 1/4)	

WALNUT RIDGE, ARKANSAS

Amdt 3D 20MAY21

36°07'N-90°56'W

WALNUT RIDGE RGNL (ARG)  
**LOC RWY 18**

SC-1, 07 AUG 2025 to 04 SEP 2025

SC-1, 07 AUG 2025 to 04 SEP 2025