

VICTORIA, TEXAS

AL-438 (FAA)

25163

VOR/DME VCT	APP CRS	Rwy Ldg TDZE	9111
109.0	307°	106	
Chan 27		Apt Elev	115

VOR RWY 31

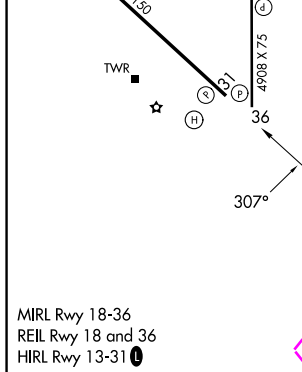
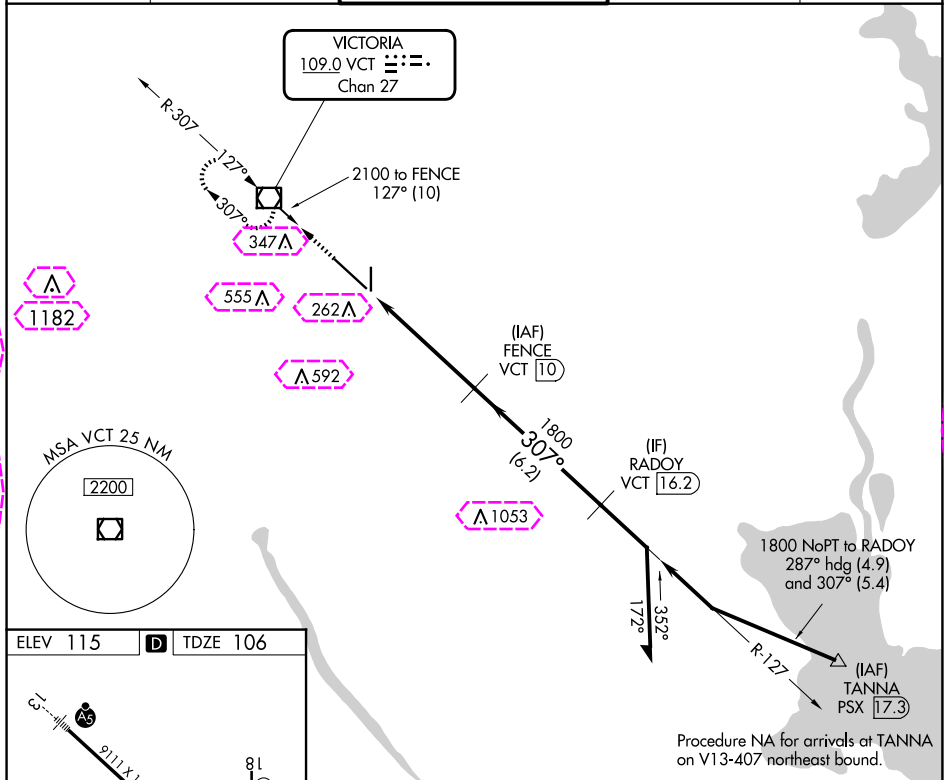
VICTORIA RGNL (VCT)

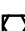
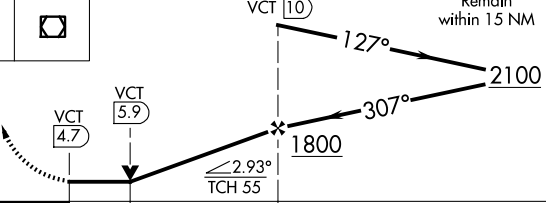

DME required.



MISSED APPROACH: Climb to 2000 direct VCT VOR/DME and hold.

ATIS	HOUSTON CENTER	VICTORIA TOWER ★	GND CON	UNICOM
119.025	135.05 353.6	126.075 (CTAF) 257.95	120.525 239.25	122.7



2000 ↑	VCT 	FENCE VCT 10	Remain within 15 NM		
					
CATEGORY	A	B	C	D	E
S-31	540-1	434 (500-1)	540-1¼ 434 (500-1¼)		
 CIRCLING	580-1	465 (500-1)	820-2 705 (800-2)	880-2½ 765 (800-2½)	NA

VICTORIA, TEXAS
Orig-A 27JAN22

28°51'N-96°55'W

VICTORIA RGNL (VCT)
VOR RWY 31

VICTORIA, TEXAS

AL-438 (FAA)

25219

VOR/DME VCT	APP CRS	Rwy Ldg	9111
109.0	307°	TDZE	106
Chan 27		Apt Elev	115

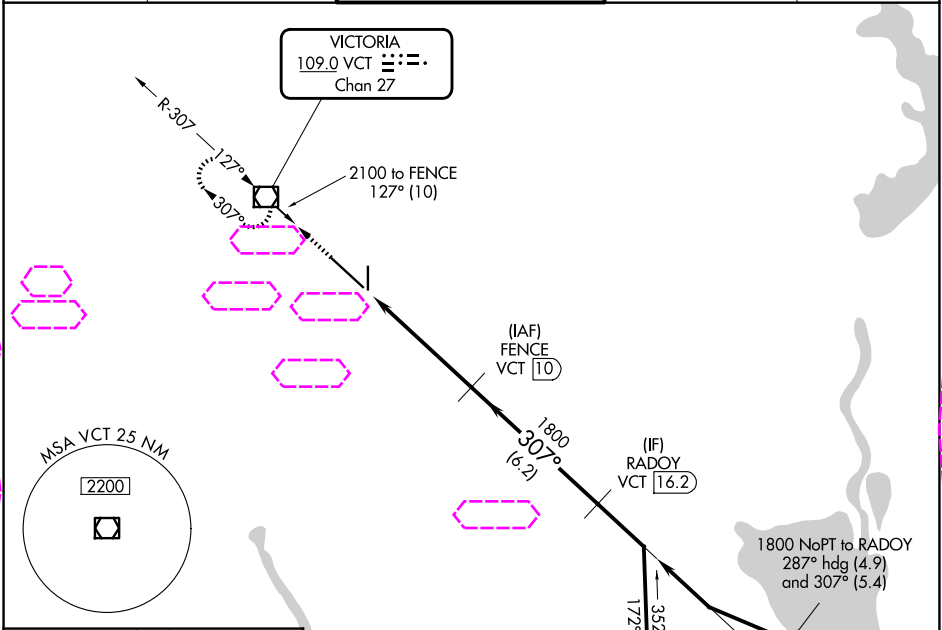
VOR RWY 31

VICTORIA RGNL (VCT)

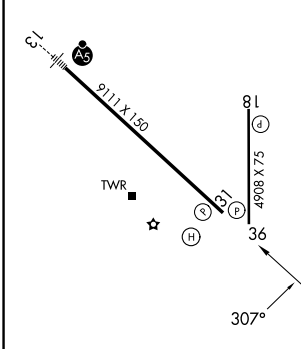
DME required.

MISSED APPROACH: Climb to 2000 direct VCT VOR/DME and hold.

ATIS	HOUSTON CENTER	VICTORIA TOWER ★	GND CON	UNICOM
119.025	135.05 353.6	126.075 (CTAF) 257.95	120.525 239.25	122.7



ELEV 115	D	TDZE 106
----------	---	----------



	2000	VCT	FENCE VCT 10	127°	2100	307°	1800	2.93° TCH 55	1.2 NM	4.1 NM	
CATEGORY	A	B	C	D	E						
S-31	540-1	434 (500-1)	540-1¼	434 (500-1¼)							
CIRCLING	580-1	465 (500-1)	820-2 705 (800-2)	880-2½ 765 (800-2½)	NA						

VICTORIA, TEXAS
Orig-A 27JAN22

28°51'N-96°55'W

VICTORIA RGNL (VCT)
VOR RWY 31

SC-5, 07 AUG 2025 to 04 SEP 2025

SC-5, 07 AUG 2025 to 04 SEP 2025