

VICTORIA, TEXAS

AL-438 (FAA)

25163

VOR/DME VCT	APP CRS	Rwy Ldg	9111
109.0	127°	TDZE	115
Chan 27		Apt Elev	115

VOR RWY 13

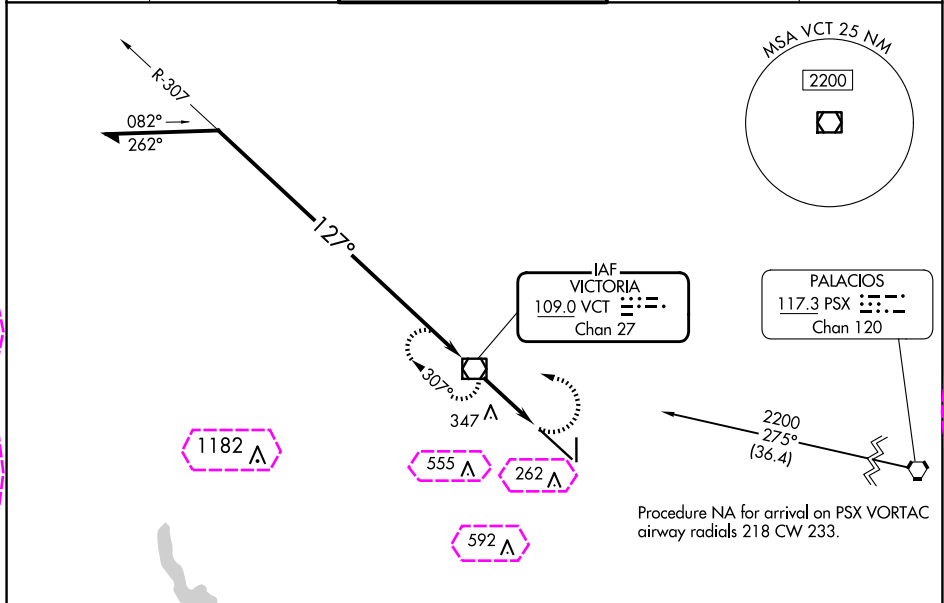
VICTORIA RGNL (VCT)

For inop ALS, increase Cat C/D/E visibility to 1 3/8 SM.

MALSR

MISSED APPROACH:
Climbing left turn to 2200
direct VCT VOR/DME and
hold, continue climb-in-hold to 2200.

ATIS 119.025	HOUSTON CENTER 135.05 353.6	VICTORIA TOWER ★ 126.075 (CTAF) 0 257.95	GND CON 120.525 239.25	UNICOM 122.7
-----------------	--------------------------------	---	---------------------------	-----------------



ELEV 115 TDZE 115

Remain within 1.5 NM

VCT VOR/DME

2200

307°

127°

1300

3.31° TCH 53

VCT 2

VCT 3.2

2 NM

1.2 NM

CATEGORY	A	B	C	D	E
S-13	600-1/2	485 (500-1/2)	600-1	485 (500-1)	
CIRCLING	600-1	485 (500-1)	820-2 705 (800-2)	880-2 1/2 765 (800-2 1/2)	NA

MIRL Rwy 18-36

REIL Rwy 18 and 36

HIRL Rwy 13-31

FAF to MAP 3.2 NM

Knots	60	90	120	150	180
Min:Sec	3:12	2:08	1:36	1:17	1:04

VICTORIA, TEXAS
Orig-A 27JAN22

28°51'N-96°55'W

VICTORIA RGNL (VCT)
VOR RWY 13

