

VICTORIA, TEXAS

AL-438 (FAA)

25163

WAAS CH 45545 W31A	APP CRS 308°	Rwy Ldg 9111 TDZE 106 Apt Elev 115
--------------------------	-----------------	--

# RNAV (GPS) RWY 31

VICTORIA RGNL (VCT)

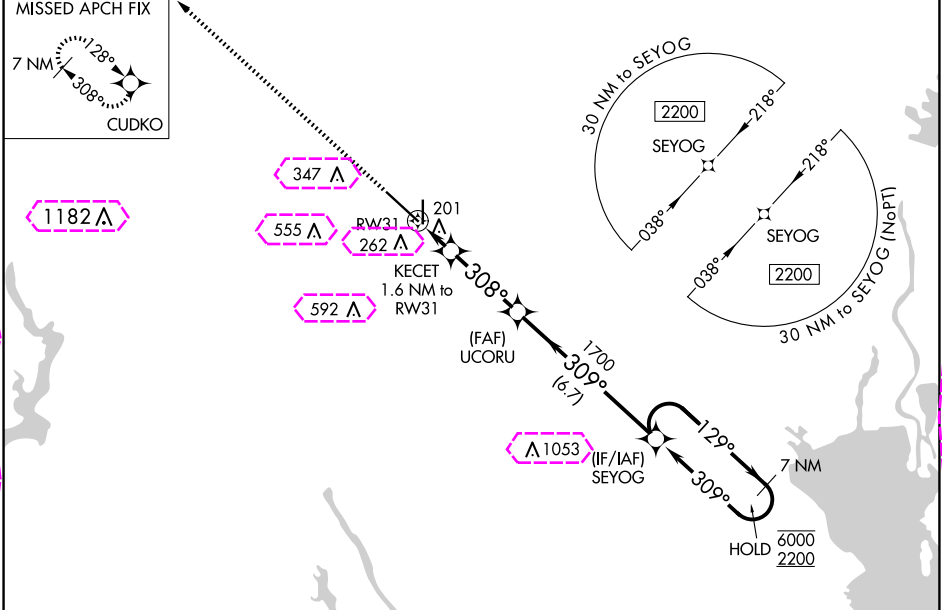
RNP APCH-GPS.

**V**  
**A**

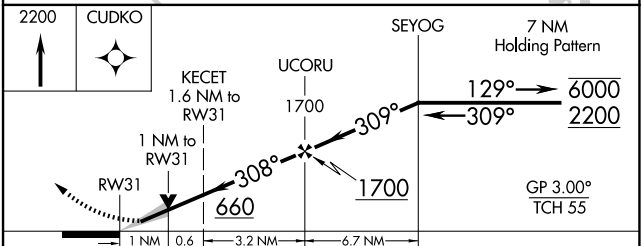
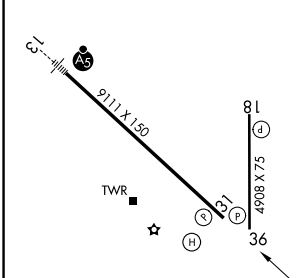
For uncompensated Baro-VNAV systems, procedure NA below -15°C or above 54°C.

MISSED APPROACH:  
Climb to 2200 direct  
CUDKO and hold.

ATIS 119.025	HOUSTON CENTER 135.05 353.6	VICTORIA TOWER ★ 126.075 (CTAF) 257.95	GND CON 120.525 239.25	UNICOM 122.7
-----------------	--------------------------------	---	---------------------------	-----------------



ELEV 115	D	TDZE 106
----------	---	----------



CATEGORY	A	B	C	D	E
LPV DA	306-3/4 200 (200-3/4)				
LNAV/VNAV DA	374-7/8 268 (300-7/8)				
LNAV MDA	460-1 354 (400-1)				
<b>CIRCLING</b>	580-1	465 (500-1)	820-2 705 (800-2)	880-2 1/2 765 (800-2 1/2)	NA

VICTORIA, TEXAS  
Orig-A 27JAN22

28°51'N-96°55'W

# RNAV (GPS) RWY 31

VICTORIA RGNL (VCT)

VICTORIA, TEXAS

AL-438 (FAA)

25219

WAAS CH <b>45545</b> <b>W31A</b>	APP CRS <b>308°</b>	Rwy Ldg <b>9111</b> TDZE <b>106</b> Apt Elev <b>115</b>
--	------------------------	---

# RNAV (GPS) RWY 31

VICTORIA RGNL (VCT)

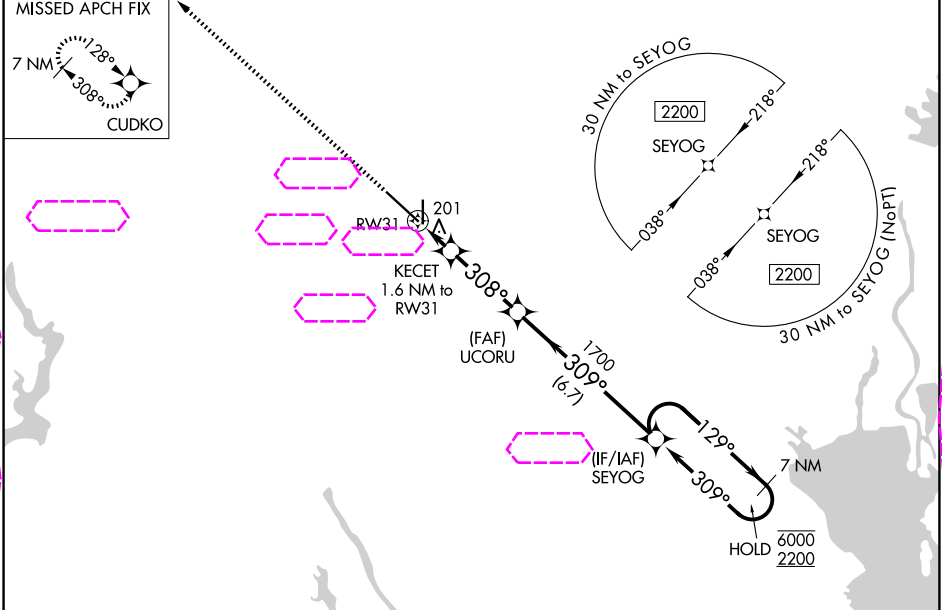
RNP APCH-GPS.

**V**  
**A**

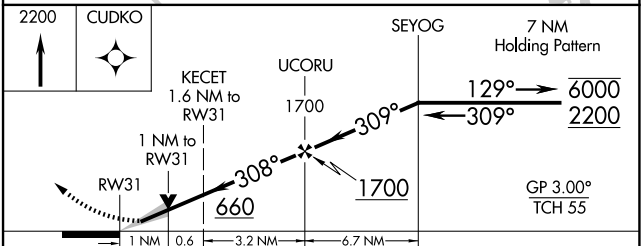
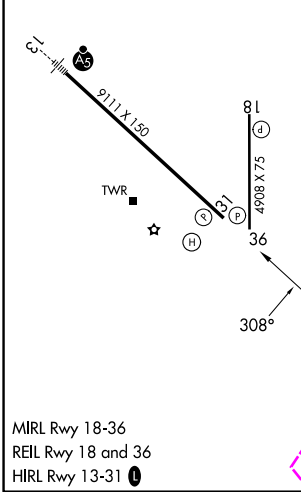
For uncompensated Baro-VNAV systems, procedure NA below -15°C or above 54°C.

MISSED APPROACH:  
Climb to 2200 direct  
CUDKO and hold.

ATIS <b>119.025</b>	HOUSTON CENTER <b>135.05 353.6</b>	VICTORIA TOWER ★ <b>126.075 (CTAF) 0 257.95</b>	GND CON <b>120.525 239.25</b>	UNICOM <b>122.7</b>
------------------------	---------------------------------------	--	----------------------------------	------------------------



ELEV <b>115</b>	<b>D</b>	TDZE <b>106</b>
-----------------	----------	-----------------



CATEGORY	A	B	C	D	E
LPV DA	306-3/4 200 (200-3/4)				
LNAV/VNAV DA	374-7/8 268 (300-7/8)				
LNAV MDA	460-1 354 (400-1)				
<b>CIRCLING</b>	580-1	465 (500-1)	820-2 705 (800-2)	880-2 1/2 765 (800-2 1/2)	NA

VICTORIA, TEXAS  
Orig-A 27JAN22

28°51'N-96°55'W

# RNAV (GPS) RWY 31

VICTORIA RGNL (VCT)

SC-5, 07 AUG 2025 to 04 SEP 2025

SC-5, 07 AUG 2025 to 04 SEP 2025