

VICTORIA, TEXAS

AL-438 (FAA)

25163

WAAS CH 86245 W13A	APP CRS 128°	Rwy Ldg 9111 TDZE 115 Apt Elev 115
--	------------------------	---

RNAV (GPS) RWY 13

VICTORIA RGNL (VCT)

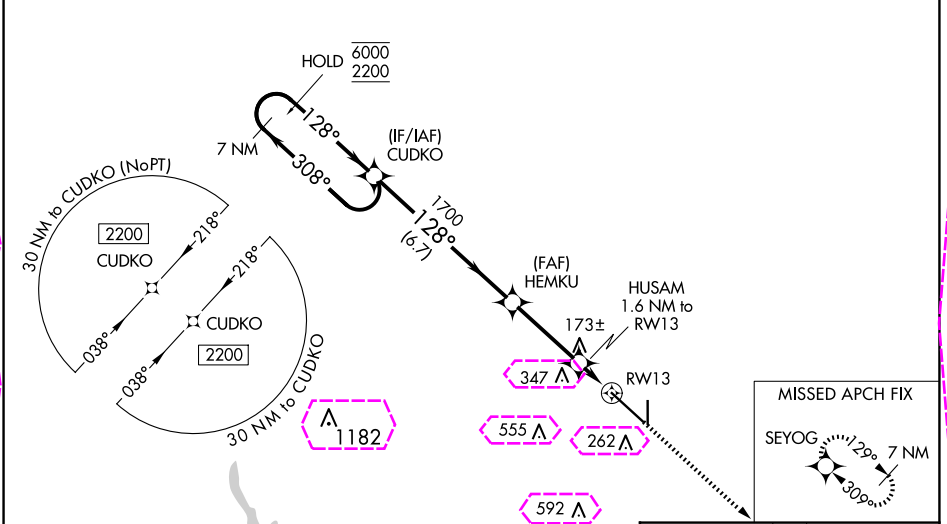
RNP APCH-GPS.

For uncompensated Baro-VNAV systems, LNAV/VNAV NA below -15°C or above 54°C. For inop ALS, increase LPV Cat E and LNAV/VNAV all Cats visibility to ¾ SM and LNAV Cat E visibility to 1 SM.

MALSR

MISSED APPROACH:
Climb to 2200 direct SEYOG and hold.

ATIS 119.025	HOUSTON CENTER 135.05 353.6	VICTORIA TOWER ★ 126.075 (CTAF) 257.95	GND CON 120.525 239.25	UNICOM 122.7
------------------------	---------------------------------------	--	----------------------------------	------------------------



ELEV 115

TDZE 115

7 NM Holding Pattern

CUDKO

HEMKU

HUSAM 1.6 NM to RWY 13

0.9 NM to RWY 13

RWY 13

GP 3.00° TCH 53

6000

2200

308°

128°

1700

660

0.7

0.9 NM

6.7 NM

3.2 NM

2200

SEYOG

128°

9111 X 150

TWR

81

4908 X 75

36

CATEGORY	A	B	C	D	E
LPV DA		315-½	200 (200-½)		
LNAV/VNAV DA		365-½	250 (300-½)		
LNAV MDA		440-½	325 (400-½)		
CIRCLING	580-1	465 (500-1)	820-2 705 (800-2)	880-2 ½ 765 (800-2 ½)	NA

MIRL Rwy 18-36
REIL Rwy 18 and 36
HIRL Rwy 13-31

VICTORIA, TEXAS
Orig-A 27JAN22

28°51'N-96°55'W

RNAV (GPS) RWY 13

VICTORIA RGNL (VCT)

SC-5, 10 JUL 2025 to 07 AUG 2025

SC-5, 10 JUL 2025 to 07 AUG 2025

VICTORIA, TEXAS

AL-438 (FAA)

25219

WAAS CH 86245 W13A	APP CRS 128°	Rwy Ldg 9111 TDZE 115 Apt Elev 115
--	------------------------	---

RNAV (GPS) RWY 13

VICTORIA RGNL (VCT)

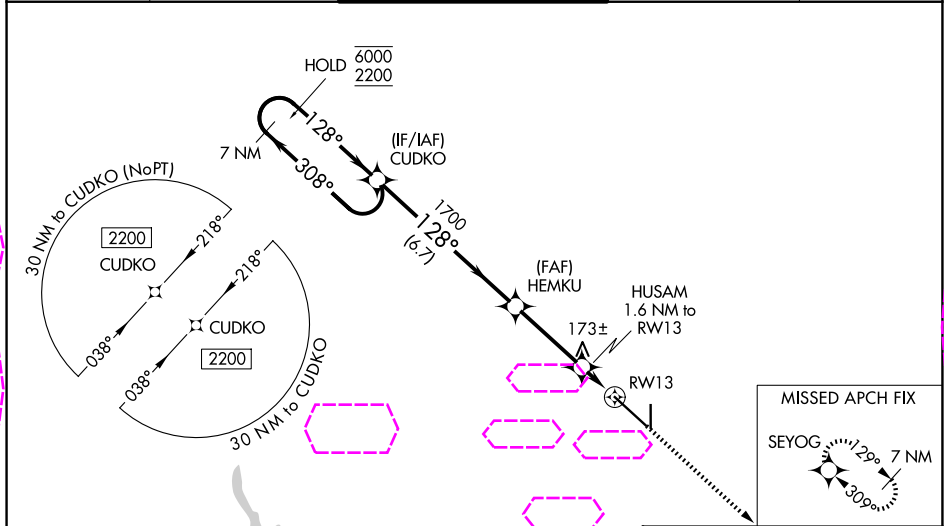
RNP APCH-GPS.

For uncompensated Baro-VNAV systems, LNAV/VNAV NA below -15°C or above 54°C. For inop ALS, increase LPV Cat E and LNAV/VNAV all Cats visibility to ¾ SM and LNAV Cat E visibility to 1 SM.

MALSR

MISSED APPROACH:
Climb to 2200 direct
SEYOG and hold.

ATIS 119.025	HOUSTON CENTER 135.05 353.6	VICTORIA TOWER ★ 126.075 (CTAF) 0 257.95	GND CON 120.525 239.25	UNICOM 122.7
------------------------	---------------------------------------	--	----------------------------------	------------------------



ELEV 115

TDZE 115

7 NM Holding Pattern

CUDKO

HEMKU

HUSAM 1.6 NM to RWY 13

0.9 NM to RWY 13

0.7 NM

0.9 NM

660

1700

128°

308°

128°

128°

GP 3.00°

TCH 53

2200

SEYOG

128°

9111 X 150

TWR

81

4908 X 75

36

CATEGORY	A	B	C	D	E
LPV DA		315-½	200 (200-½)		
LNAV/VNAV DA		365-½	250 (300-½)		
LNAV MDA		440-½	325 (400-½)		
CIRCLING	580-1	465 (500-1)	820-2 705 (800-2)	880-2 ½ 765 (800-2 ½)	NA

MIRL Rwy 18-36
REIL Rwy 18 and 36
HIRL Rwy 13-31 0

VICTORIA, TEXAS
Orig-A 27JAN22

28°51'N-96°55'W

VICTORIA RGNL (VCT)
RNAV (GPS) RWY 13

SC-5, 07 AUG 2025 to 04 SEP 2025

SC-5, 07 AUG 2025 to 04 SEP 2025