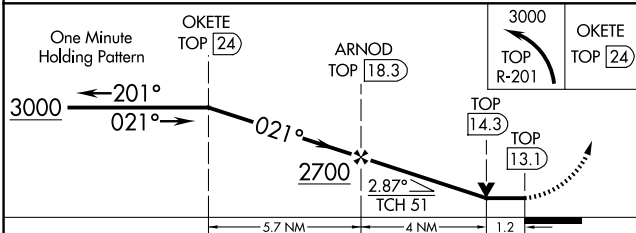
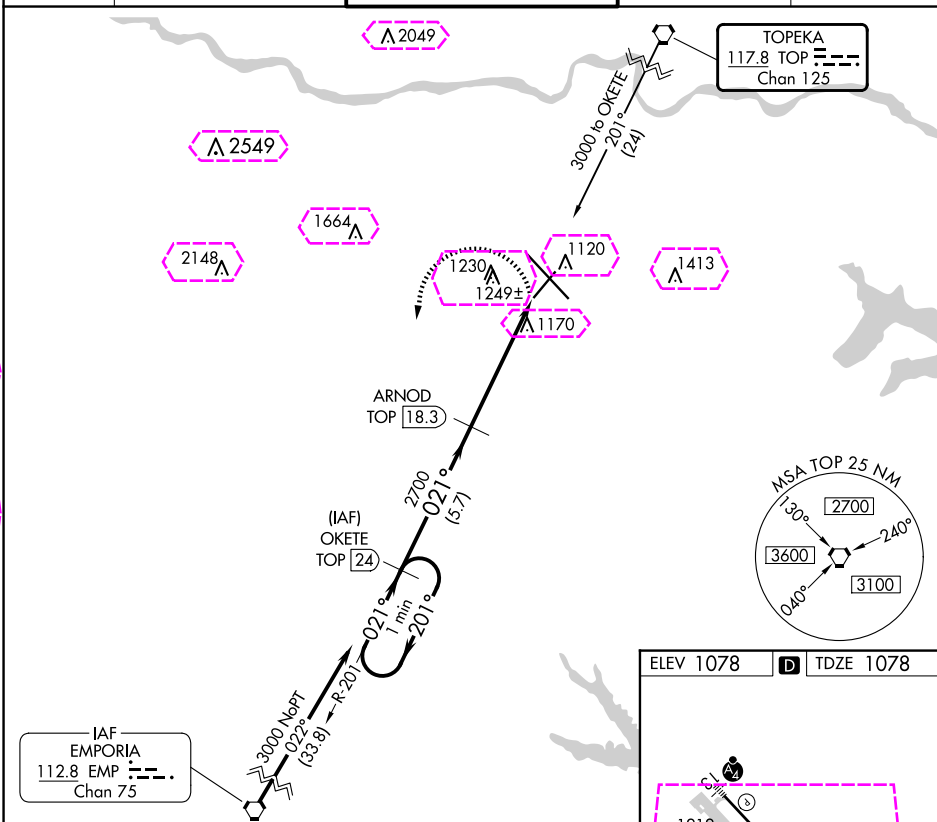



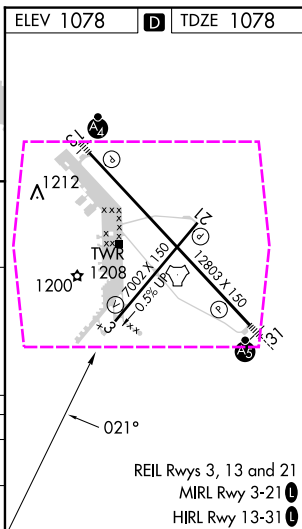
VOR/DME or TACAN RWY 3  
TOPEKA RGNL (FOE)

**MISSED APPROACH:** Climbing left turn to 3000 via TOP R-201 to OKETE/24 DME and hold.

ATIS <b>128.25</b>	KANSAS CITY CENTER <b>123.8 343.7</b>	FORBES TOWER★ <b>120.8 (CTAF) 0 340.2</b>	GND CON <b>118.425 275.8</b>	UNICOM <b>122.95</b>
-----------------------	--	--	---------------------------------	-------------------------



CATEGORY	A	B	C	D
S-3	1520-1 442 (500-1)		1520-1 $\frac{3}{8}$ 442 (500-1 $\frac{3}{8}$ )	
 CIRCLING	1520-1 442 (500-1)	1580-1 502 (600-1)	1580-1 $\frac{1}{2}$ 502 (600-1 $\frac{1}{2}$ )	1700-2 622 (700-2)



TOPEKA RGNL (FOE)

VOR/DME or TACAN RWY 3

NC-2, 10 JUL 2025 to 07 AUG 2025

TOPEKA, KANSAS

AL-424 (FAA)

25219

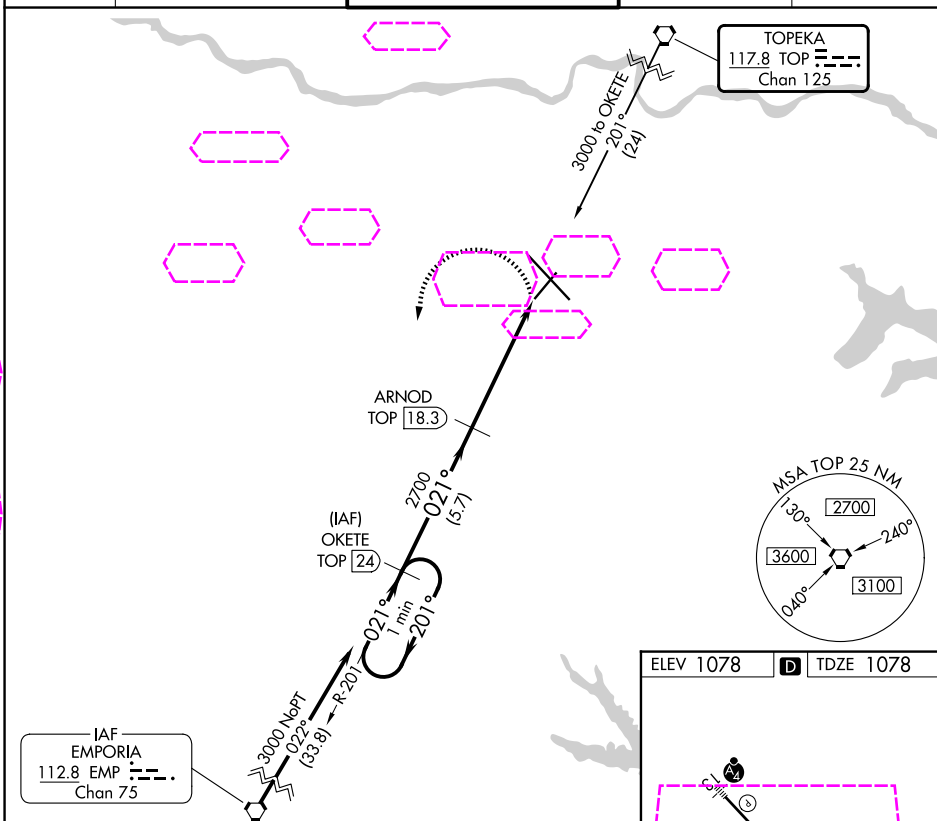
VORTAC TOP <b>117.8</b> Chan <b>125</b>	APP CRS <b>021°</b>	Rwy Ldg TDZE Apt Elev	<b>7001</b> <b>1078</b> <b>1078</b>
---	------------------------	-----------------------------	---

## VOR/DME or TACAN RWY 3

TOPEKA RGNL (F/OE)

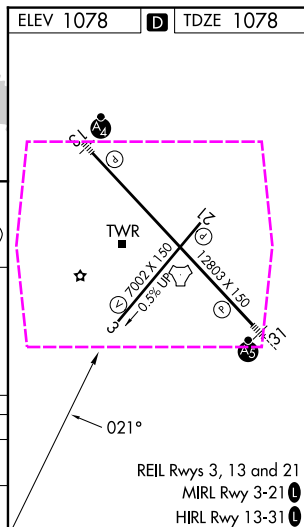
MISSED APPROACH: Climbing left turn to 3000 via TOP R-201 to OKETE/24 DME and hold.

ATIS <b>128.25</b>	KANSAS CITY CENTER <b>123.8 343.7</b>	FORBES TOWER★ <b>120.8 (CTAF) 340.2</b>	GND CON <b>118.425 275.8</b>	UNICOM <b>122.95</b>
-----------------------	--	--	---------------------------------	-------------------------



ELEV 1078 D TDZE 1078

One Minute Holding Pattern				
3000 ← 201° 021° → 2700				
OKETE TOP 24				
ARNOD TOP 18.3				
3000 TOP R-201 OKETE TOP 24				
TOP 14.3 TOP 13.1				
5.7 NM 4 NM 1.2 NM				
CATEGORY	A	B	C	D
S-3	1520-1	442 (500-1)	1520-1 3/8	442 (500-1 3/8)
CIRCLING	1520-1	1580-1	1580-1 1/2	1700-2
	442 (500-1)	502 (600-1)	502 (600-1 1/2)	622 (700-2)



REIL Rws 3, 13 and 21  
MIRL Rwy 3-21  
HIRL Rwy 13-31

TOPEKA, KANSAS  
Amdt 6D 11AUG22

38°57'N-95°40'W

TOPEKA RGNL (F/OE)

## VOR/DME or TACAN RWY 3

NC-2, 07 AUG 2025 to 04 SEP 2025

NC-2, 07 AUG 2025 to 04 SEP 2025