

TOPEKA, KANSAS

AL-424 (FAA)

23334

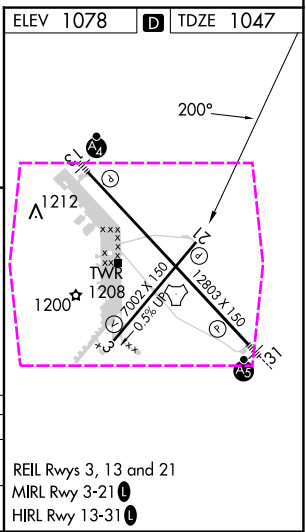
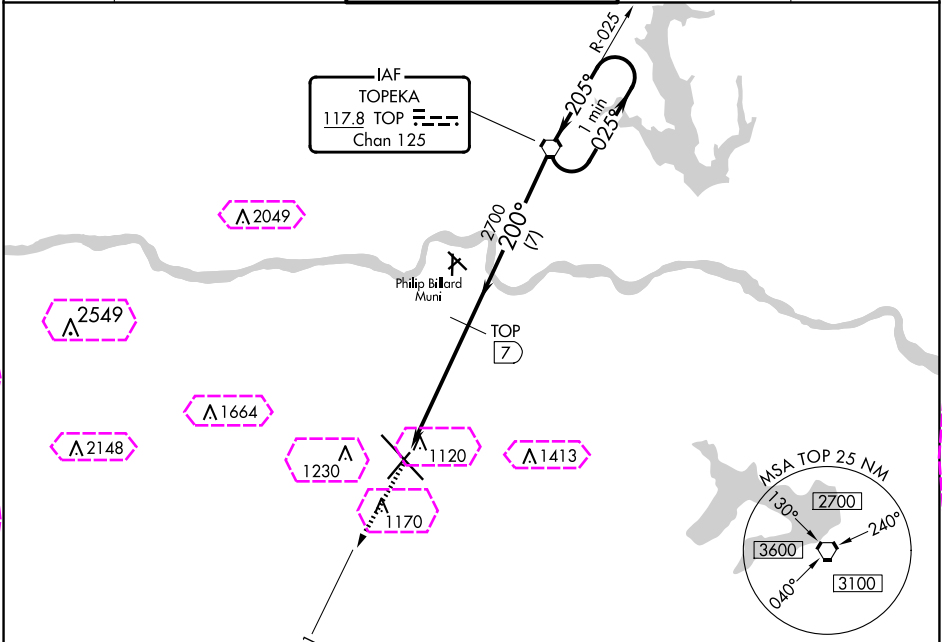
VORTAC TOP 117.8 Chan 125	APP CRS 200°	Rwy Idg TDZE Apt Elev	7001 1047 1078
---	------------------------	-----------------------------	---

VOR/DME or TACAN RWY 21

TOPEKA RGNL (F0E)

MISSED APPROACH: Climb to 3000 direct OKETE/24 DME and hold.

ATIS 128.25	KANSAS CITY CENTER 123.8 343.7	FORBES TOWER★ 120.8 (CTAF) 340.2	GND CON 118.425 275.8	UNICOM 122.95
-----------------------	--	--	---------------------------------	-------------------------



3000	OKETE TOP 24	TOP 10.9	TOP 12	TOP 7	TOP VORTAC	One Minute Holding Pattern
		1.1	3.9 NM	7 NM		
CATEGORY	A	B	C	D		
S-21	1440-1	393 (400-1)	1440-1¼	393 (400-1¼)		
CIRCLING	1520-1 442 (500-1)	1580-1 502 (600-1)	1580-1½ 502 (600-1½)	1700-2 622 (700-2)		

TOPEKA, KANSAS
Amdt 7B 18AUG16

38°57'N-95°40'W

TOPEKA RGNL (F0E)

VOR/DME or TACAN RWY 21

NC-2, 10 JUL 2025 to 07 AUG 2025

NC-2, 10 JUL 2025 to 07 AUG 2025

TOPEKA, KANSAS

AL-424 (FAA)

25219

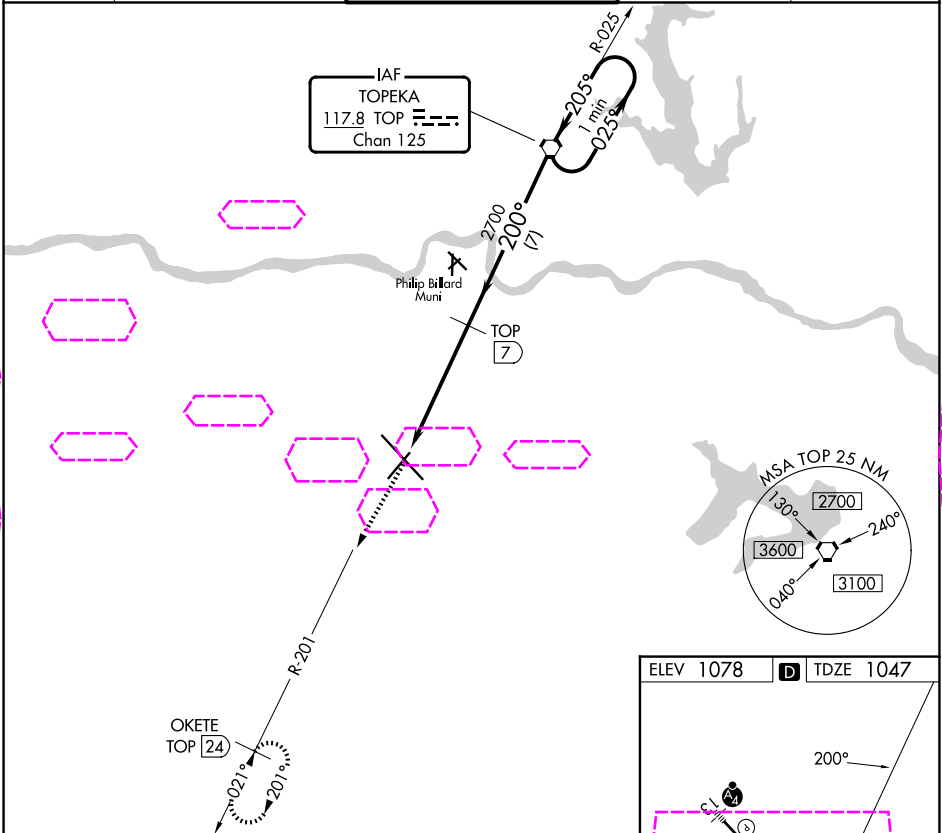
VORTAC TOP 117.8 Chan 125	APP CRS 200°	Rwy Ldg TDZE 1047 Apt Elev 1078
---	------------------------	---

VOR/DME or TACAN RWY 21

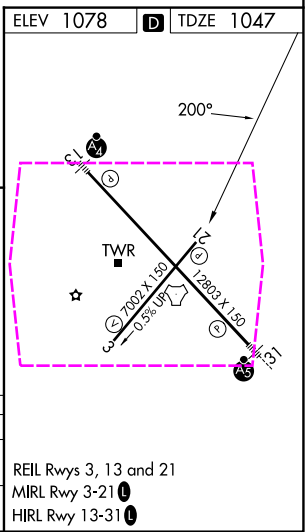
TOPEKA RGNL (F0E)

MISSED APPROACH: Climb to 3000 direct OKETE/24 DME and hold.

ATIS 128.25	KANSAS CITY CENTER 123.8 343.7	FORBES TOWER★ 120.8 (CTAF) 340.2	GND CON 118.425 275.8	UNICOM 122.95
-----------------------	--	--	---------------------------------	-------------------------



3000	OKETE TOP 24	TOP 10.9	TOP 12	TOP 7	TOP VORTAC	One Minute Holding Pattern
3000	2700	2700	2700	2700	2700	2700
1.1	3.9 NM	7 NM				
CATEGORY	A	B	C	D		
S-21	1440-1	393 (400-1)	1440-1 393 (400-1 1/4)	1700-2		
CIRCLING	1520-1 442 (500-1)	1580-1 502 (600-1)	1580-1 1/2 502 (600-1 1/2)	1700-2 622 (700-2)		



TOPEKA, KANSAS
Amdt 7B 18AUG16

38°57'N-95°40'W

TOPEKA RGNL (F0E)

VOR/DME or TACAN RWY 21

NC-2, 07 AUG 2025 to 04 SEP 2025

NC-2, 07 AUG 2025 to 04 SEP 2025