

TOPEKA, KANSAS

AL-424 (FAA)

23334

TACAN FOE Chan 53 (111.6)	APP CRS 304°	Rwy Idg 12803 TDZE 1037 Apt Elev 1078
--	------------------------	--

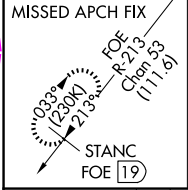
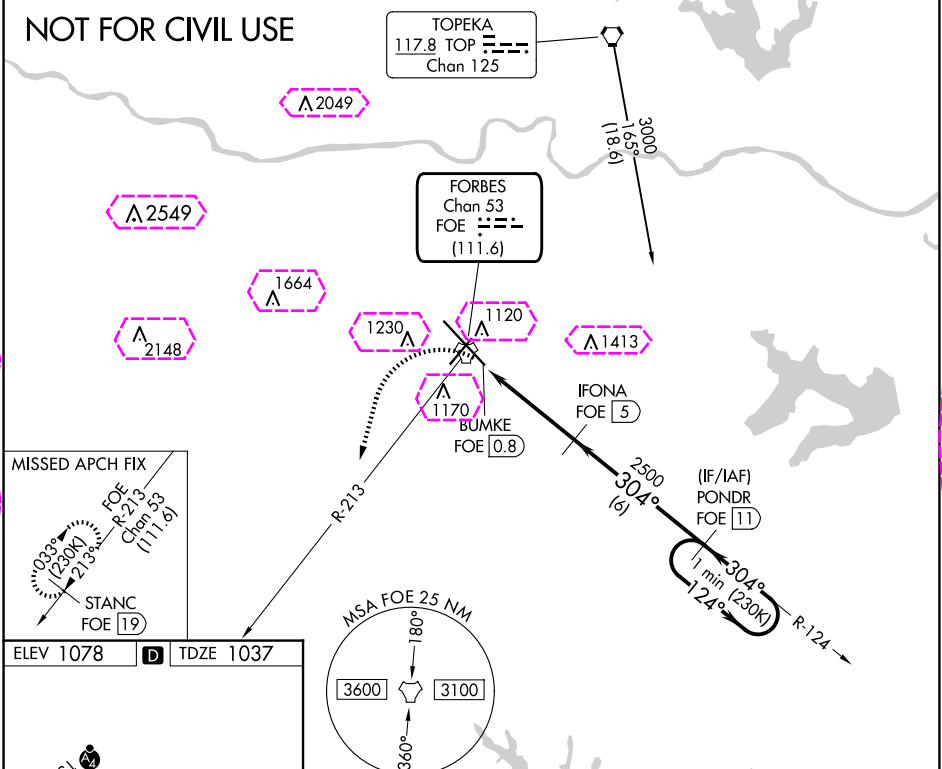
TACAN RWY 31

TOPEKA RGNL (FOE)

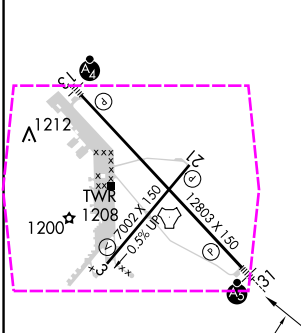
NA For inoperative ALS, increase S-31 Cats C/D/E visibility to 1 3/8 SM.	MALSR 	MISSED APPROACH: Climbing left turn to 3000 heading 190° and on FOE TACAN R-213 to STANC/19 DME and hold.
---	-----------	---


ATIS 128.25	KANSAS CITY CENTER 123.8 343.7	FORBES TOWER★ 120.8 (CTAF) 340.2	GND CON 118.425 275.8	UNICOM 122.95
-----------------------	--	--	---------------------------------	-------------------------

NOT FOR CIVIL USE



ELEV 1078	D	TDZE 1037
-----------	----------	-----------



Emergency Safe Altitude 100 NM 3600					
3000 hdg 190°	FOE R-213	STANC FOE 19	IFONA FOE 5	PONDR FOE 11	One Minute Holding Pattern
FOE TACAN	FOE BUMKE 0.8	FOE 2.1	3.15° TCH 58	2500	124° → ← 304°
1.3	2.9 NM		6 NM		
CATEGORY	A	B	C	D	E
S-31	1500/24 463 (500-½)		1500/50 463 (500-1)		
 CIRCLING	1520-1 442 (500-1)	1580-1 502 (600-1)	1580-1½ 502 (600-1½)	1700-2 622 (700-2)	1720-2¼ 642 (700-2¼)

TOPEKA, KANSAS
Amdt 4A 05JAN17

38°57'N-95°40'W

TOPEKA RGNL (FOE)
TACAN RWY 31

NC-2, 10 JUL 2025 to 07 AUG 2025

NC-2, 10 JUL 2025 to 07 AUG 2025

TOPEKA, KANSAS

AL-424 (FAA)

25219

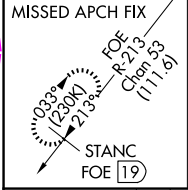
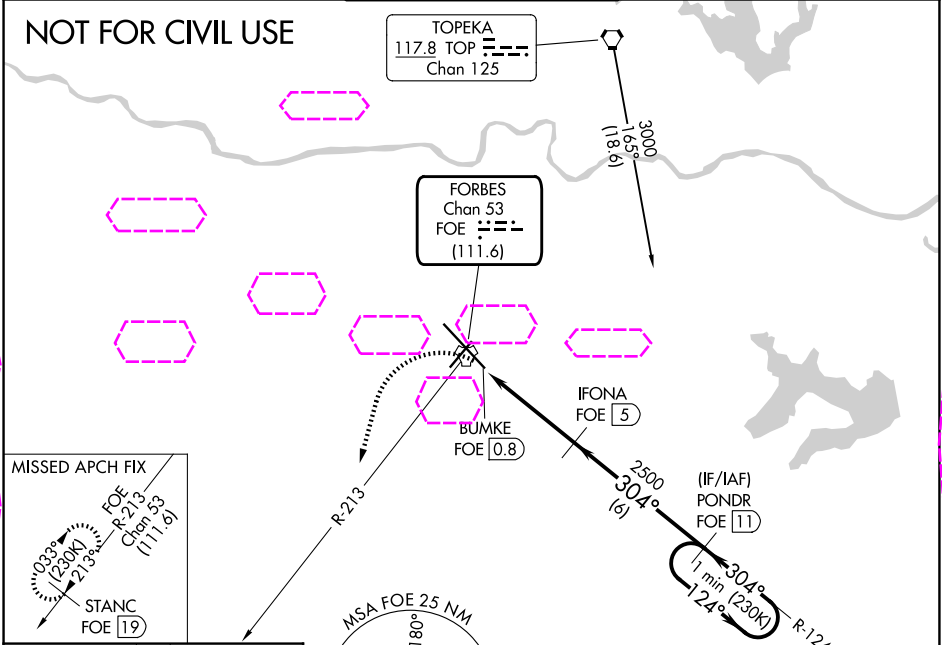
TACAN FOE Chan 53 (111.6)	APP CRS 304°	Rwy Ldg 12803 TDZE 1037 Apt Elev 1078
---	------------------------	--

TACAN RWY 31

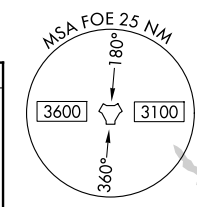
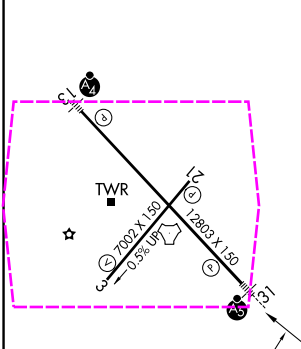
TOPEKA RGNL (FOE)

NA For inoperative ALS, increase S-31 Cats C/D/E visibility to 1 3/8 SM.	MALSR 	MISSED APPROACH: Climbing left turn to 3000 heading 190° and on FOE TACAN R-213 to STANC/19 DME and hold.
---	------------------	--

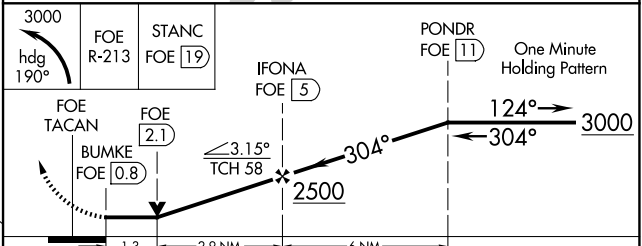
ATIS 128.25	KANSAS CITY CENTER 123.8 343.7	FORBES TOWER★ 120.8 (CTAF) 340.2	GND CON 118.425 275.8	UNICOM 122.95
------------------------------	---	---	--	--------------------------------



ELEV 1078	D	TDZE 1037
-----------	----------	-----------



Emergency Safe Altitude 100 NM 3600



REIL Rws 3, 13 and 21
MIRL Rwy 3-21
HIRL Rwy 13-31

CATEGORY	A	B	C	D	E
S-31	1500/24	463 (500-1/2)	1500/50	463 (500-1)	
CIRCLING	1520-1 442 (500-1)	1580-1 502 (600-1)	1580-1 1/2 502 (600-1 1/2)	1700-2 622 (700-2)	1720-2 1/4 642 (700-2 1/4)

TOPEKA, KANSAS
Amdt 4A 05JAN17

38°57'N-95°40'W

TOPEKA RGNL (FOE)
TACAN RWY 31

NC-2, 07 AUG 2025 to 04 SEP 2025

NC-2, 07 AUG 2025 to 04 SEP 2025