

TOPEKA, KANSAS

WAAS CH 65934 W03A	APP CRS 035°	Rwy Idg 7001 TDZE 1078 Apt Elev 1078
--	------------------------	---

RNAV (GPS) RWY 3

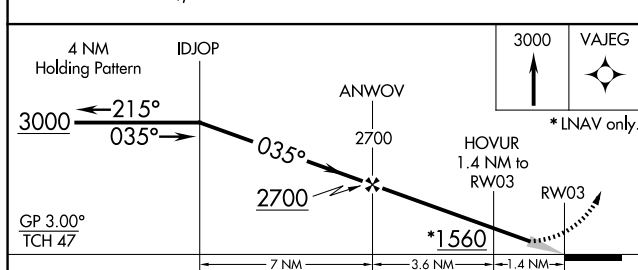
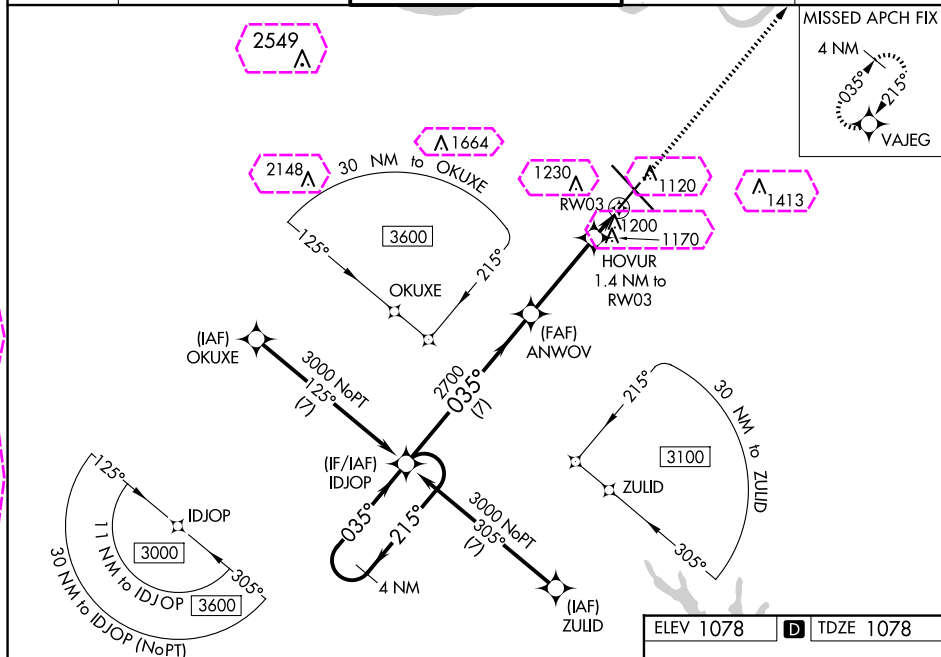
TOPEKA RGNL (FOE)


RNP APCH - GPS.

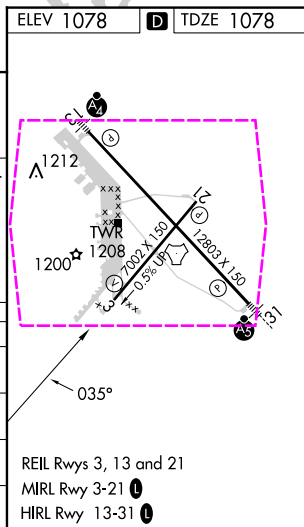
⚠ Baro-VNAV NA when using Philip Billard Muni altimeter setting. For uncompensated Baro-VNAV systems, LNAV/VNAV NA below -19°C or above 54°C. When local altimeter setting not received, use Philip Billard Muni altimeter setting and increase all DA 45 feet and all MDA 60 feet, increase LPV all Cats and LNAV/VNAV all Cats visibility ¼ mile, LNAV Cat C/D and Circling Cat D visibilities ¼ mile.

MISSED APPROACH:
Climb to 3000 direct
VAFEG and hold

ATIS 128.25	KANSAS CITY CENTER 123.8 343.7	FORBES TOWER ★ 120.8 (CTAF) 0 340.2	GND CON 118.425 275.8	UNICOM 122.95
----------------	-----------------------------------	--	--------------------------	------------------



CATEGORY	A	B	C	D
LPV DA	1328- ³ / ₄ 250 (300- ³ / ₄)			
LNAV/ VNAV DA	1363- ⁷ / ₈ 285 (300- ⁷ / ₈)			
LNAV MDA	1460-1 382 (400-1)		1460-1 ¹ / ₈ 382 (400-1 ¹ / ₈)	
 CIRCLING	1520-1 442 (500-1)	1580-1 502 (600-1)	1580-1 ¹ / ₂ 502 (600-1 ¹ / ₂)	1700-2 622 (700-2)



TOPEKA, KANSAS
Amdt 1C 11AUG22

38°57'N-95°40'W

TOPEKA RGNL (FOE)

RNAV (GPS) RWY 3

NC-2, 10 JUL 2025 to 07 AUG 2025

NC-2, 10 JUL 2025 to 07 AUG 2025

TOPEKA, KANSAS

AL-424 (FAA)

25219

WAAS CH 65934 W03A	APP CRS 035°	Rwy Ldg TDZE Apt Elev 1078	7001 1078 1078
--	------------------------	---	---

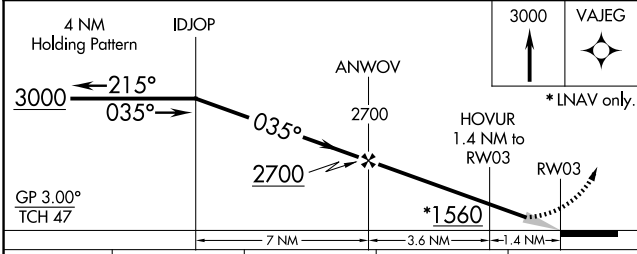
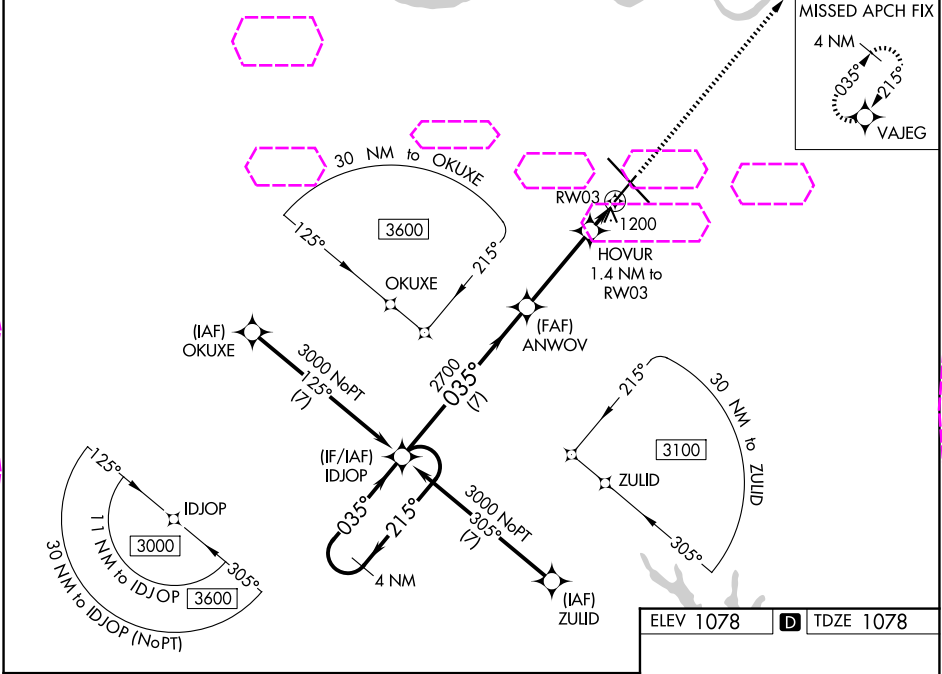
RNAV (GPS) RWY 3
TOPEKA RGNL (F/OE)

RNP APCH - GPS.

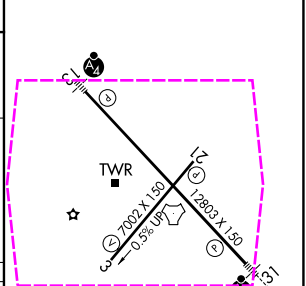
⚠ Baro-VNAV NA when using Philip Billard Muni altimeter setting. For uncompensated Baro-VNAV systems, LNAV/VNAV NA below -19°C or above 54°C. When local altimeter setting not received, use Philip Billard Muni altimeter setting and increase all DA 45 feet and all MDA 60 feet, increase LPV all Cats and LNAV/VNAV all Cats visibility ¼ mile, LNAV Cat C/D and Circling Cat D - visibilities ¼ mile.

MISSED APPROACH:
Climb to 3000 direct VAJEG and hold.

ATIS 128.25	KANSAS CITY CENTER 123.8 343.7	FORBES TOWER★ 120.8 (CTAF) 340.2	GND CON 118.425 275.8	UNICOM 122.95
-----------------------	--	--	---------------------------------	-------------------------



ELEV 1078	D TDZE 1078
-----------	--------------------



CATEGORY	A	B	C	D
LPV DA		1328-3/4	250 (300-3/4)	
LNAV/VNAV DA		1363-7/8	285 (300-7/8)	
LNAV MDA	1460-1	382 (400-1)	1460-1 1/8	382 (400-1 1/8)
CIRCLING	1520-1 442 (500-1)	1580-1 502 (600-1)	1580-1 1/2 502 (600-1 1/2)	1700-2 622 (700-2)

REIL Rwy 3, 13 and 21
MIRL Rwy 3-21 **1**
HIRL Rwy 13-31 **1**

TOPEKA, KANSAS
Amdt 1C 11AUG22

38°57'N-95°40'W

TOPEKA RGNL (F/OE)
RNAV (GPS) RWY 3

NC-2, 07 AUG 2025 to 04 SEP 2025

NC-2, 07 AUG 2025 to 04 SEP 2025