

TOPEKA, KANSAS

AL-424 (FAA)

23334

WAAS CH 78399 W31A	APP CRS 312°	Rwy Idg 12803 TDZE 1037 Apt Elev 1078
--	------------------------	--

RNAV (GPS) RWY 31

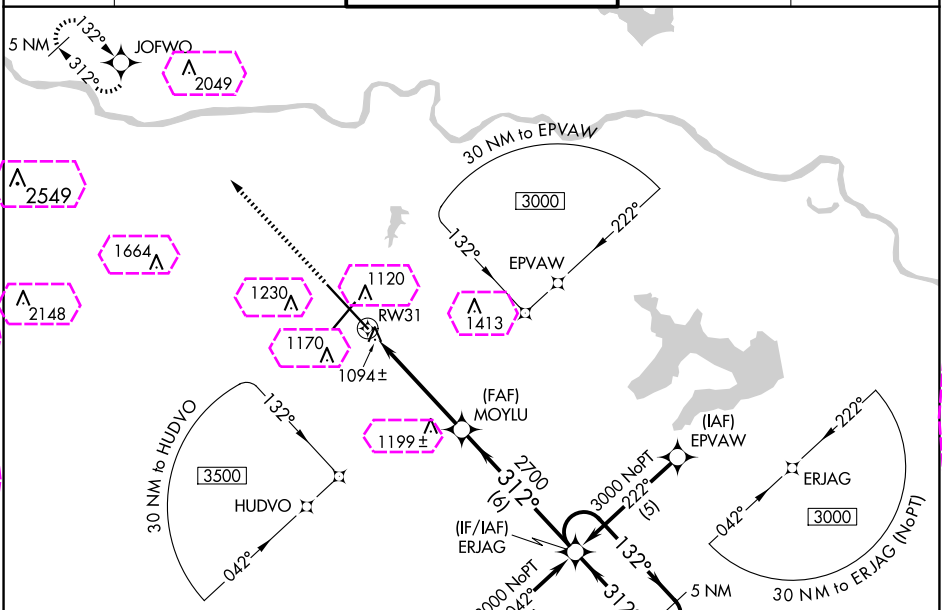
TOPEKA RGNL (F/OE)

⚠ For inoperative MALSR, increase LPV all Cats visibility to RVR 4000, and LNAV/VNAV Cat D to RVR 5000. Baro-VNAV NA when using Philip Billard Muni altimeter setting. If local altimeter setting not received, use Philip Billard Muni altimeter setting and increase all DAs/MDAs 60 feet. Baro-VNAV NA below -17°C (2°F). DME/DME RNP-0.3 NA. VDP NA when using Philip Billard Muni altimeter setting.

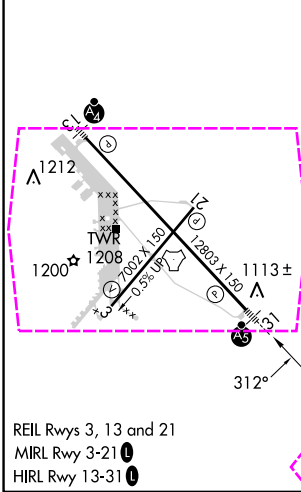
MALSR

MISSED APPROACH:
Climb to 3600 direct JOFWO and hold.

ATIS 128.25	KANSAS CITY CENTER 123.8 343.7	FORBES TOWER★ 120.8 (CTAF) 340.2	GND CON 118.425 275.8	UNICOM 122.95
-----------------------	--	--	---------------------------------	-------------------------



ELEV 1078	D	TDZE 1037
-----------	----------	-----------



3600

↑

JOFWO

✦

ERJAG

5 NM Holding Pattern

*LNAV only.

MOYLU

132° → 3000

← 312°

*1.3 NM to RW31

2700

GP 3.00°

TCH 58

RW31

1.3 NM

3.7 NM

6 NM

CATEGORY	A	B	C	D
LPV DA	1298/24 261 (300-½)			
LNAV/VNAV DA	1357/24 320 (300-½)			1357/40 320 (300-¾)
LNAV MDA	1500/24 463 (500-½)	1500/40 463 (500-¾)	1500/50 463 (500-1)	1700-2 622 (700-2)
CIRCLING	1520-1 442 (500-1)	1580-1 502 (600-1)	1580-1½ 502 (600-1½)	1700-2 622 (700-2)

TOPEKA, KANSAS
Orig-B 18AUG16

38°57'N-95°40'W

RNAV (GPS) RWY 31

TOPEKA, KANSAS

AL-424 (FAA)


25219

WAAS CH 78399 W31A	APP CRS 312°	Rwy Ldg 12803 TDZE 1037 Apt Elev 1078
--	------------------------	--

RNAV (GPS) RWY 31

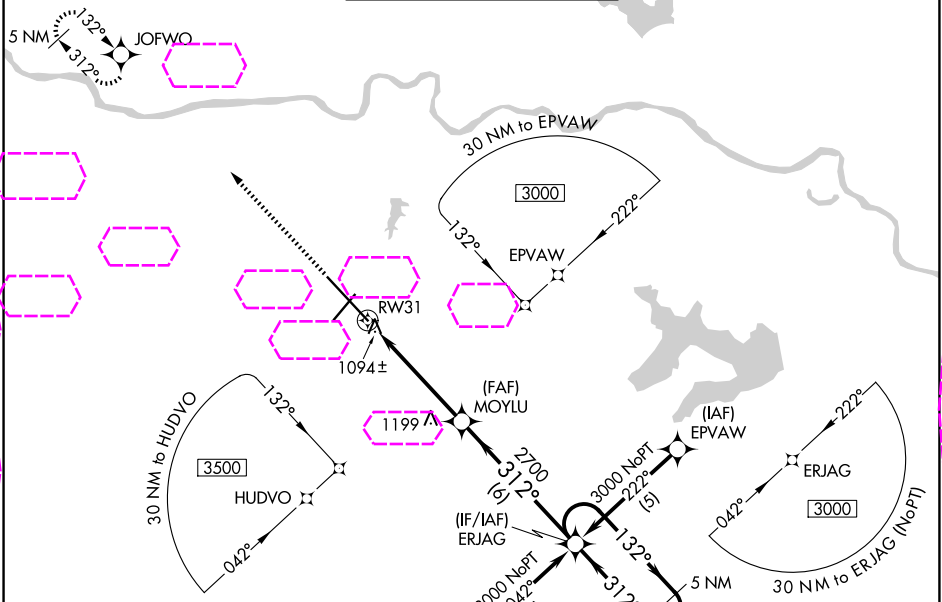
TOPEKA RGNL (F/OE)

⚠ For inoperative MALSR, increase LPV all Cats visibility to RVR 4000, and LNAV/VNAV Cat D to RVR 5000. Baro-VNAV NA when using Philip Billard Muni altimeter setting. If local altimeter setting not received, use Philip Billard Muni altimeter setting and increase all DAs/MDAs 60 feet. Baro-VNAV NA below -17°C (2°F). DME/DME RNP-0.3 NA. VDP NA when using Philip Billard Muni altimeter setting.

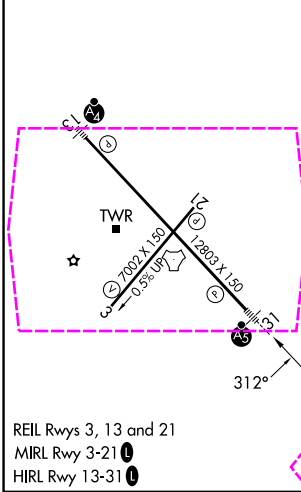
MALSR






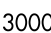
MISSED APPROACH:
Climb to 3600 direct JOFWO and hold.

ATIS 128.25	KANSAS CITY CENTER 123.8 343.7	FORBES TOWER* 120.8 (CTAF) 340.2	GND CON 118.425 275.8	UNICOM 122.95
-----------------------	--	--	---------------------------------	-------------------------



ELEV 1078	D	TDZE 1037
-----------	----------	-----------



3600	JOFWO	ERJAG	5 NM Holding Pattern	
				
*LNAV only.				
	MOYLU			
	*1.3 NM to RW31	312°	132° → ← 312°	
		2700	GP 3.00° TCH 58	
	1.3 NM	3.7 NM	6 NM	
CATEGORY	A	B	C	D
LPV DA	1298/24 261 (300-½)			
LNAV/VNAV DA	1357/24 320 (300-½)			1357/40 320 (300-¾)
LNAV MDA	1500/24 463 (500-½)	1500/40 463 (500-¾)	1500/50 463 (500-1)	
CIRCLING	1520-1 442 (500-1)	1580-1 502 (600-1)	1580-1½ 502 (600-1½)	1700-2 622 (700-2)

TOPEKA, KANSAS
Orig-B 18AUG16

38°57'N-95°40'W

TOPEKA RGNL (F/OE)

RNAV (GPS) RWY 31

NC-2, 07 AUG 2025 to 04 SEP 2025

NC-2, 07 AUG 2025 to 04 SEP 2025